

The background features a collage of images. The top half shows a mining operation with yellow CAT trucks, a conveyor belt, and a large pile of ore. The bottom half shows agricultural scenes, including a combine harvester in a field, a crop duster plane spraying a field, and a close-up of green and red tomatoes.

VERDANT

MINERALS

Investor Presentation

August 2017

Disclaimer

- *This presentation (the Presentation) has been prepared by Verdant Minerals Ltd (Verdant Minerals). It is not intended to be and does not constitute an offer to sell, or a solicitation of an offer to buy or sell, Verdant Minerals' securities.*
- *This Presentation does not constitute a recommendation to invest in Verdant Minerals' assets, nor investment, accounting, financial, legal, tax or other advice and does not take into consideration the investment objectives, financial situation or particular needs of any recipient of the Presentation (Recipient). Before making an investment decision, Recipients should (a) conduct their own independent investigations and analysis of Verdant Minerals and the information set out in the Presentation, (b) rely entirely on such investigations and analysis and not on this Presentation in relation to their assessment of Verdant Minerals and (c) form their own opinion as to whether or-not to invest in Verdant Minerals' securities*
- *The Presentation contains a summary of Verdant Minerals and its activities which are current as at the date of this Presentation. The information in this Presentation is general in nature and does not propose to be complete nor does it purport to contain all of the information that a prospective investor may require in evaluating a possible investment in Verdant Minerals or that would be required in a prospectus or a product disclosure statement prepared in accordance with the Corporations Act. To the maximum extent permitted by law, none of Verdant Minerals and its related bodies corporate, and each of those parties' officers, employees, agents, advisers and associates (each a Relevant Person) is, or may be taken to be, under any obligation to correct, update or revise the Presentation*
- *Any forward looking statements (including forecasts) included in this Presentation are not representations as to future matters and should not be relied upon by Recipients. The statements are based on a large number of assumptions about future events and are subject to significant uncertainties and contingencies, many of which are outside the control of Verdant Minerals. No representation is made that any forecast or future event will be achieved. Actual results may vary significantly from the forecasts. Each Recipient should make its own enquiries and investigations regarding the assumptions, uncertainties and contingencies which may affect Verdant Minerals' assets.*
- *To the maximum extent permitted by law, each Relevant Person makes no representation or warranty (express or implied) as to the currency, accuracy, reasonableness or completeness of the information, statements and opinions expressed in this Presentation (Information). To the maximum extent permitted by law, all liability in respect of the Information is expressly excluded, including without limitation any liability arising from fault or negligence, for any direct, indirect or consequential loss or damage arising from the use of the Information or otherwise. No responsibility is accepted by any Relevant Person, for any of the Information, any omission from this Presentation or for any action taken by the Recipient or any other person on the basis of the Information.*

Arable land per capita is likely to fall by almost one quarter between 2000 and 2030 while demand for food will increase by one half.

As a result, the demands of food supply must be met through higher yields from existing arable land, putting more strain on soils.

Greater application of nutrients in the form of mineral and chemical fertilisers, will be a key means of achieving the necessary yields

Company Highlights



- ASX listed developer of Australian fertiliser mineral projects. (Verdant Minerals - ASX:VRM)
- Strong global thematic supports fertiliser demand
- Focussed on developing the long life, low cost Ammaroo phosphate project:
 - Australia's largest phosphate JORC resource
 - low strip ratio, low cost mining and beneficiation operation
 - located in Northern Territory of Australia close to rail, road and gas infrastructure
 - Advantaged access to key Asian markets through the port of Darwin
 - Granted major project status by the Northern Territory Government
- Advanced Project - Bankable Feasibility Study (BFS) and Environmental Impact Statement (EIS) for phosphate rock concentrate production by end of 2017/early 2018
- Portfolio of Sulphate of Potash projects to round out fertiliser mineral portfolio
- Long term support of major shareholder Washington H Soul Pattinson
- Fully funded (\$8.3m at 31 March 17) to deliver BFS and EIS for Ammaroo Phosphate project
- Restructured Board combining fertiliser industry and project development expertise

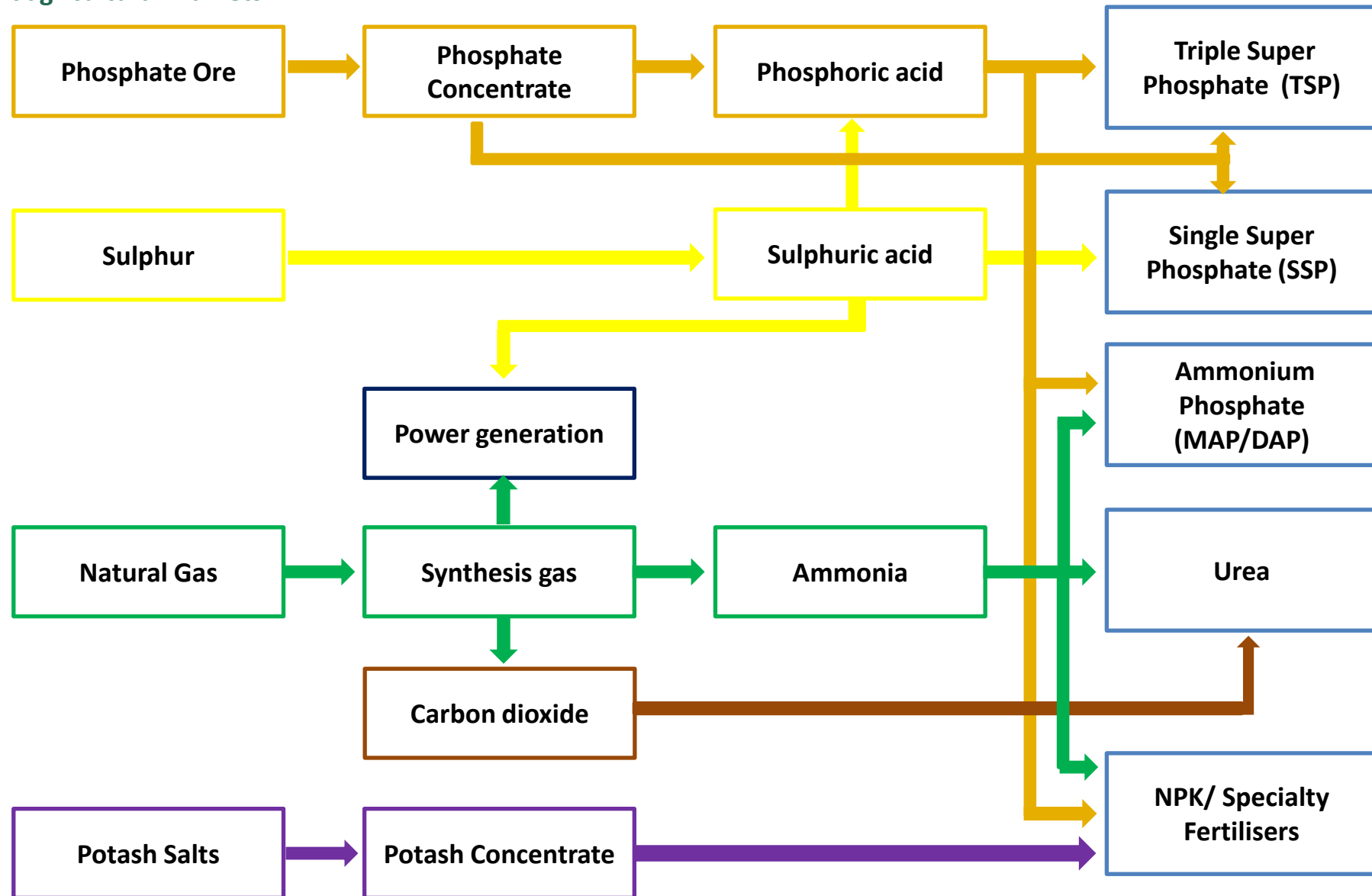
Why Develop Northern Australian Phosphates? – Key Strategic Themes



- Leverage regional demand growth and opportunity for supply substitution and supply security in nearby and growing Asian, Australian, east African and west Latin American markets
- The Georgina Basin, a dry ancient inland sea in Northern Australia, could become a globally significant phosphate province with further exploration of which there is significant potential
- Existing back bone of under-utilised rail, port and gas infrastructure
- Australia is leading the world in mining and processing innovation, automation and remote operations management which creates opportunity to develop low cost operations
- Advantage from low geopolitical risk and proximity to markets compared to traditional suppliers
- Availability of gas, phosphate rock and potassium brine resources in the Northern Territory creates the medium term opportunity for value chain integration from raw materials to value added and speciality fertilisers across the NP&K spectrum. Could be attractive to fertiliser majors in time

The Fertiliser Value Chain

The Northern Territory of Australia is one of the few parts of the world where these fertiliser ingredients, with the exception of sulphur, are available within close proximity and with competitive access to a number of significant agricultural markets



* Does not include animal feeds such as di-calcium phosphate and urea based feeds products

Corporate Video

See video at www.verdantminerals.com.au

THE AMMAROO PHOSPHATE PROJECT



Ammaroo Phosphate Project overview

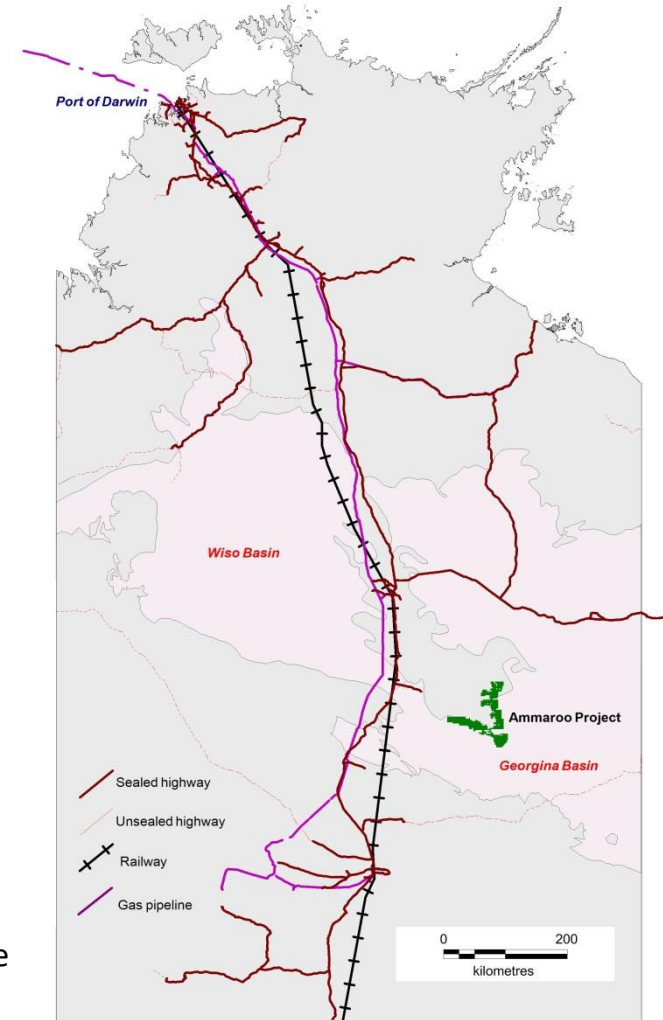
The Ammaroo Phosphate Project is the largest JORC compliant rock phosphate resource in Australia



Overview of the Ammaroo Phosphate project

Location of project

- Bankable feasibility study, environmental approvals process and native title negotiations underway to develop a 2 million tonne per annum phosphate rock concentrate production operation. Staged development planned in 1 million tonne increments
- Project development capital target for BFS for mine, beneficiation plant and associated mine site infrastructure <A\$200m (US\$150m) per 1 million tonnes of concentrate production. Additional A\$120m (US\$88) being sought from a Federal Government Northern Australian Development Infrastructure Fund for a 90km rail spur
- Site operating cost target <US\$30 per tonne loaded on the train. FOB port of Darwin cost target <US\$60 per tonne
- Resource is largely shallow, free digging, moderate grade phosphate ore resulting in very low mining costs. Easily beneficiated to a 32% plus market standard rock concentrate at a relatively low cost
- Processing routes defined using existing and established technology that will minimise risks
- Rock concentrate specifications suit phosphoric acid production markets in India, south east and north east Asia. Shipping advantages from the port of Darwin to key markets
- Assets are strategically located in close proximity to the Amadeus gas pipeline, significant ground water resources and the Central Australian Railway, providing access to export markets through the Port of Darwin, and to domestic markets via existing rail networks



Ammaroo Phosphate deposit is a very large, shallow, low strip ratio resource

The projects competitive advantage is derived from its very low mining and beneficiation costs



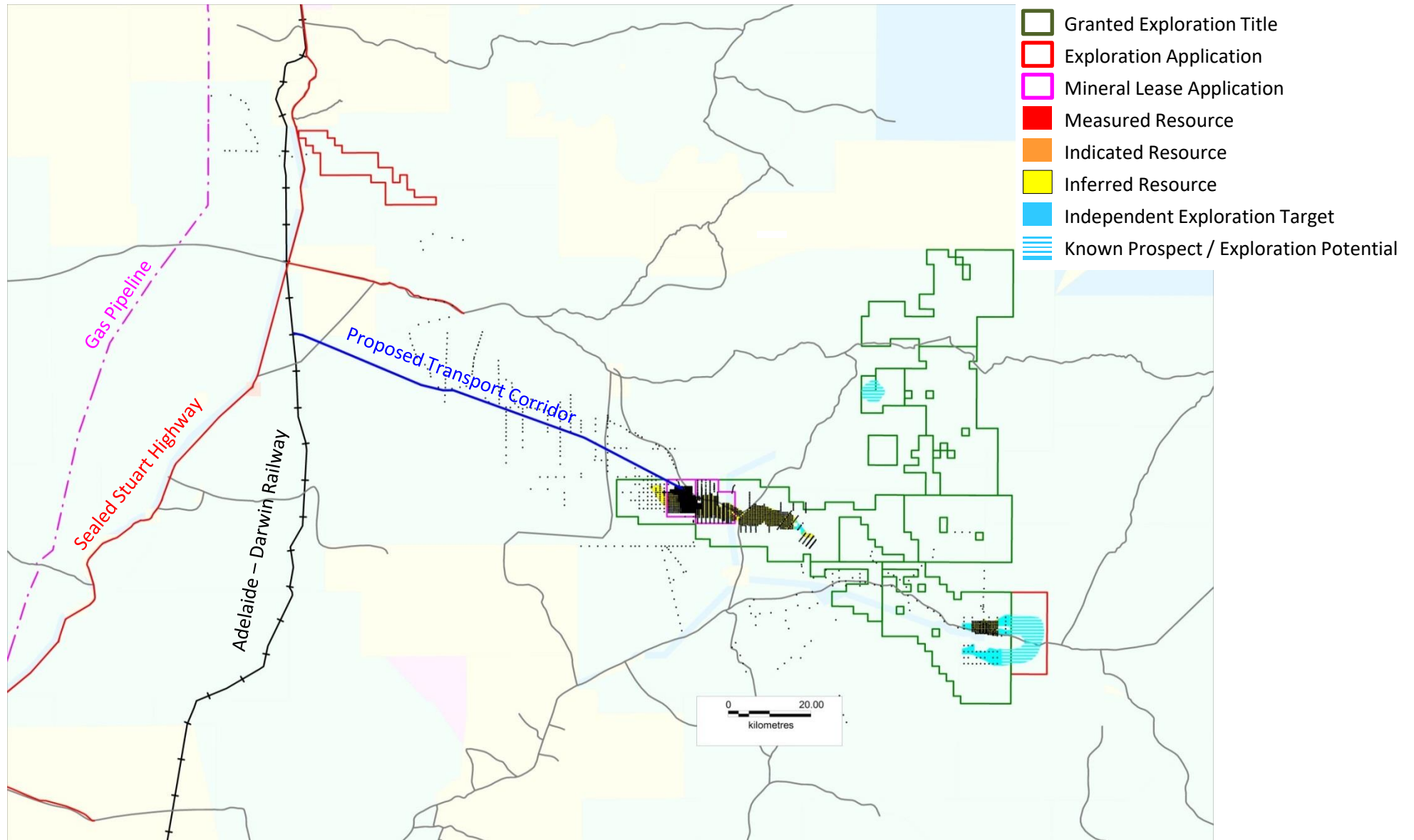
Ammaroo JORC Resource*			
Cut Off P ₂ O ₅ %	Category	Mt	P ₂ O ₅ %
10	Meas.	136	15.4
	Ind.	165	15.5
	Inf.	840	13.0
	Total	1,141	14.0
15	Meas.	61	18.5
	Ind.	72	19.0
	Inf.	200	17.0
	Total	333	18.0



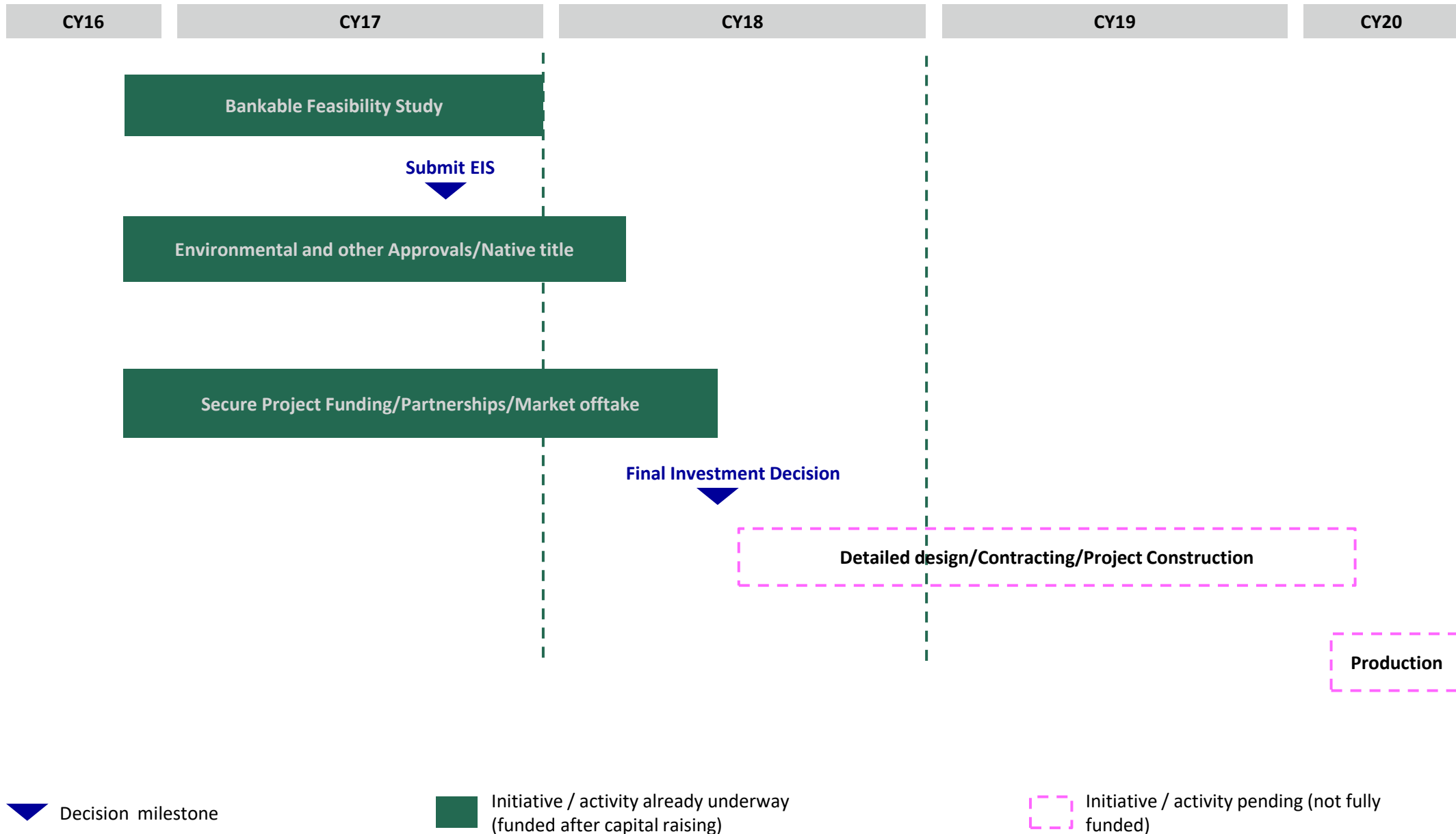
* As announced to the ASX on 15/3/17

Ammaroo is close to the necessary infrastructure

The Ammaroo Phosphate Project is proximate to existing gas and transport infrastructure, both of which have unutilised capacity



Ammaroo Phosphate Project Development Timeline



- Continued progression of the Ammaroo Phosphate Project:
 - Bankable Feasibility Study. Target completion Q4 2017
 - Environmental Approvals. Target EIS submission August /September 2017
 - Completion of Ammaroo Native Title Agreements
 - Project financing arrangements
 - Establish Heads of Agreement that define required commercial arrangements with rail and port operators

- Continue engagement with the global fertiliser industry with a view of establishing partnerships for financing the project and offtake agreements

- Pursue partnership opportunities to progress the development of the SOP portfolio