



3 May 2023

Dear Supplier,

Expression of Interest (“EOI”) – EOI 011 – Construction of Eva Copper Mine & Burke Development Road Intersection

Eva Copper Mine Pty Ltd (the “**Company**”) invites your organisation to provide an Expression of Interest for the **Construction of a Main Road Intersection** for the Eva Copper Project located 75km North of Cloncurry, Queensland.

1. Introduction to Harmony Gold

Harmony is a 70-year-old mining company headquartered in South Africa and listed on the Johannesburg and New York stock exchanges.

In FY2022 Harmony produced 1.49moz of gold with US\$2.8bn of revenue and approximately US\$500m of EBITDA. Harmony is the largest gold producer by volume in South Africa and is a significant operator of gold tailings retreatment facilities. In Papua New Guinea, Harmony owns and operates the Hidden Valley mine and owns 50% of the Tier 1 Wafi-Golpu copper-gold project.

In December 2022, Harmony acquired 100% of the Eva Copper (“Eva Copper”) project, a near-term copper project in North-West Queensland, Australia.

Eva Copper is a multi open pit sulphide and native copper mine producing a copper concentrate. The current feasibility assumes 170 million tonnes of ore and 381 million tonnes of waste are mined from seven open pits. The copper concentrator will process ~11.4 million tonnes per annum, operating at 31,200 tonnes per day, for the fifteen-year life-of-mine (LOM) duration. Construction of the tailings storage facility and a significant creek diversion is also required.

Existing infrastructure surrounding the Project site includes the Burke Developmental Road, located 8.5 km to the east of the Project, which connects Cloncurry to Normanton.

Harmony is updating the feasibility study and progressing front end engineering and design over the next 12-month period prior to a final investment decision (FID). Once FID is achieved construction is expected to take approximately 24 months. The project is also progressing early works to ensure the major construction will be completed in the time frames required.

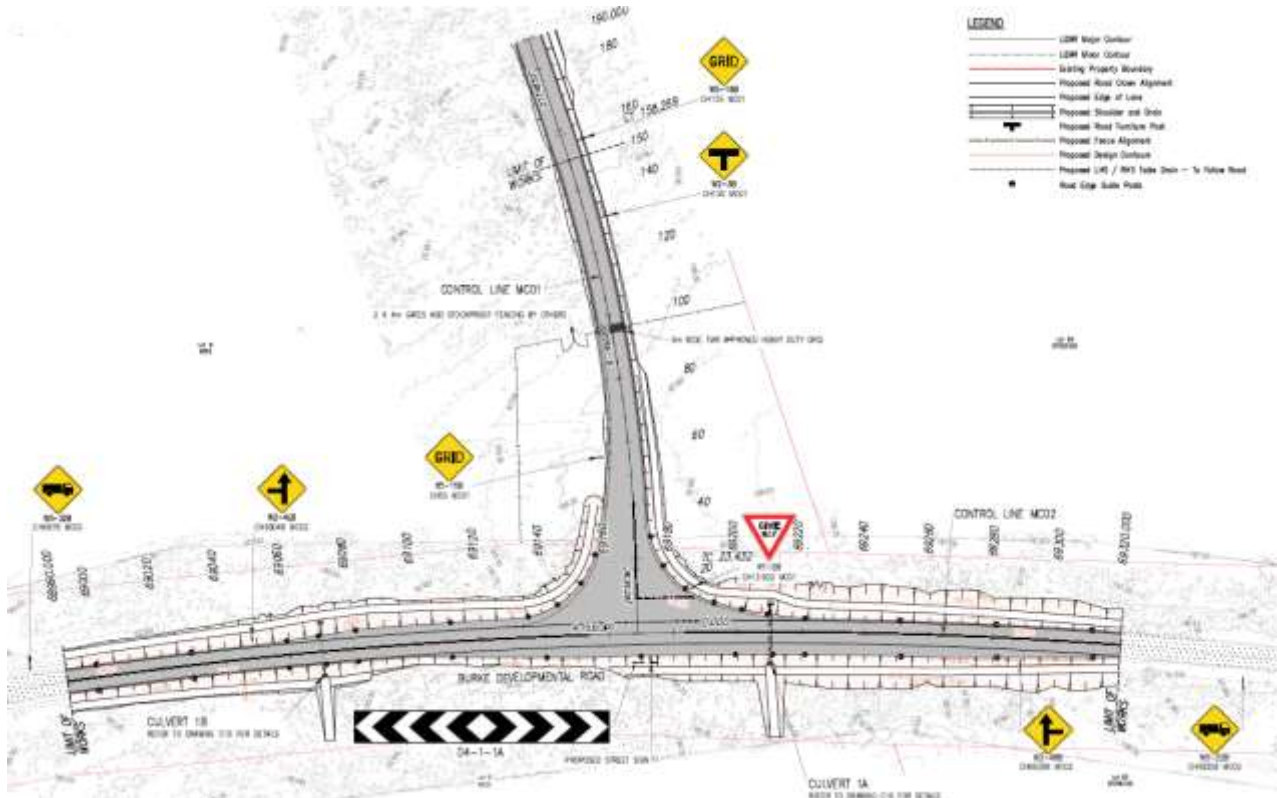
As part of the Early Works, an intersection with the Burke Development Road is required. Harmony therefore requests expression of interests for the construction of the Eva Copper Mine & Burke Development Road intersection.

2. Indigenous Communities

Harmony is committed to developing a diverse workforce and inclusive work environment, which includes providing training and career opportunities to local residents of the communities in which we operate. The Eva Copper Project is located on the traditional land of the Kalkadoon People, and the Project is committed to hiring and training of Kalkadoon People. Subject to the technical capabilities, this criterion will be a key consideration in the shortlisting of vendors, release of future tenders, and award of any contracts.

3. Supporting Information

The below general arrangement drawing aims to provide an overview of the intersection. A full set of IFC drawings will be provided to shortlisted vendors as part of the tender documentation.



All construction works to be undertaken in accordance with Queensland Department of Transport and Main Roads (DTMR) Technical Specifications and Standard Drawings.

4. Provision of Road Intersection Construction Services

Vendors must demonstrate their ability to provide similar road intersection construction services broadly in line with the following scope of services.

- Prequalified to DTMR category R2 or R3 for contract roadworks
- Prequalified to DTMR category F20 min to F50 for financial capability
- Provision of supervision services of RPEQ engineer and be accredited to DTMR
- Develop and implement a Traffic Management Plan (TMP) compliant with DTMR
- Develop and implement a Construction Management Plan (CMP) compliant with DTMR
- Develop and implement a Quality Management Plan (QMP) compliant with DTMR
- Provision of construction services including roadworks and associated drainage works
- Demonstrate track records of similar and relevant road intersection construction
- Provision of compliant and suitable construction fleet for the road construction
- Provision of experienced key personnel with relevant construction skills

5. Submission Information

We ask that you keep your expression of interest submission short, specifically addressing the following in your response:

- a) General company information
 - (i) ABN, Company name, Registered address
 - (ii) Contact details (name, email, mobile)



- (iii) Alternate point of contact details
 - (iv) Headquarter and office locations
 - (v) Company financials
 - (vi) Local and indigenous engagement policies
 - (vii) Prior project information and capability statement
 - (viii) Safety, Risk, Quality, and other accreditations
- b) Technical information
- (i) Methodology in providing an integrated service offering
 - (ii) RASCI between the company and contractor provided services
 - (iii) Indicative mobilisation scope and duration
 - (iv) Potential sub-contractor requirements
 - (v) Availability of required equipment
 - (vi) Availability of required resources
 - (vii) Availability of required materials
 - (viii) Other information considered essential to supporting the contractor's submission

6. Submissions

Submissions are to be lodged via ICN Gateway (Eva Copper Mine portal) by 5pm AEST Friday 19 May 2023 using the expression of interest form as provided within the ICN gateway. We seek to shortlist vendors throughout May and release a tender thereafter.

Enquiries can be made to eva.procurement@harmonyseasia.com

Yours sincerely,

Eva Copper Mine Pty Ltd