



WOODSIDE ENERGY LTD.  
Scarborough - ETL Coating and Installation - Execute

Document Title:	Scope of Work – Personal Protective Equipment (PPE)
Document No:	835038-SAI-HS-W-00003

SCARBOROUGH - ETL COATING AND INSTALLATION EXECUTE

# SCOPE OF WORK – PERSONAL PROTECTIVE EQUIPMENT (PPE)

B	XX/11/22	Issued for Use	G. Mathoi	O. Petit	S. Shroff
A	18/11/22	Issued for IDC	G. Mathoi	O. Petit	S. Shroff
Rev	Date	Revision Description	Prepared	Checked	Approved
			Saipem		

Total or partial reproduction and / or utilisation of this document are forbidden without prior written authorisation of the owner

Revision:	B	Page 1 of 13
Date:	XX/11/22	



**WOODSIDE ENERGY LTD.**  
Scarborough - ETL Coating and Installation - Execute

<b>Document Title:</b>	Scope of Work – Personal Protective Equipment (PPE)
<b>Document No:</b>	835038-SAI-HS-W-00003

**TABLE OF CONTENTS**

<b>1</b>	<b>DEFINITIONS &amp; ABBREVIATIONS .....</b>	<b>3</b>
1.1	DEFINITIONS .....	3
1.2	ABBREVIATIONS.....	3
<b>2</b>	<b>REFERENCES .....</b>	<b>5</b>
2.1	CODES AND STANDARDS .....	5
2.2	CONTRACTOR DOCUMENTS .....	<b>ERROR! BOOKMARK NOT DEFINED.</b>
<b>3</b>	<b>GENERAL .....</b>	<b>7</b>
3.1	PROJECT OVERVIEW .....	7
3.2	PURPOSE OF DOCUMENT .....	8
<b>4</b>	<b>SCOPE OF WORK .....</b>	<b>9</b>
4.1	CONTRACT PRICE FORM .....	<b>ERROR! BOOKMARK NOT DEFINED.</b>
4.2	PACKING AND DELIVERY .....	9
<b>5</b>	<b>PROJECT VESSELS &amp; OFFICE .....</b>	<b>10</b>
5.1	CONTRACTOR SITES .....	10
5.2	SCHEDULE OF KEY DATES .....	10
<b>6</b>	<b>QUALITY AND HSE REQUIREMENTS .....</b>	<b>11</b>
6.1	QUALITY REQUIREMENTS .....	11
6.2	HSE REQUIREMENTS .....	11
<b>7</b>	<b>REQUIRED DOCUMENTATION AND REPORTING .....</b>	<b>12</b>
7.1	DOCUMENTATION DURING BID PHASE .....	12
7.2	DOCUMENTATION DURING PROJECT PHASE .....	12
<b>8</b>	<b>PROJECT CONTROLS .....</b>	<b>13</b>
8.1	INVOICING AND PAYMENT PROCESS .....	13
8.2	CORRESPONDENCE AND DISTRIBUTION .....	<b>ERROR! BOOKMARK NOT DEFINED.</b>

**TABLE OF FIGURES**

Figure 1: Scarborough SCATL Route .....	7
---	---

**LIST OF TABLES**

Table 1: Definitions .....	3
Table 2: Abbreviations.....	4
Table 3: Codes and Standards .....	6
Table 4: Contractor Documents .....	6
Table 5 PPE Prices.....	<b>Error! Bookmark not defined.</b>
Table 6: Contractor Sites .....	10
Table 7: Schedule of Key Dates .....	10

<b>Revision:</b>	<b>A</b>	Page 2 of 13
<b>Date:</b>	<b>18/11/22</b>	



**WOODSIDE ENERGY LTD.**  
**Scarborough - ETL Coating and Installation - Execute**

<b>Document Title:</b>	<b>Scope of Work – Personal Protective Equipment (PPE)</b>
<b>Document No:</b>	<b>835038-SAI-HS-W-00003</b>

## 1 DEFINITIONS & ABBREVIATIONS

### 1.1 DEFINITIONS

<b>Term</b>	<b>Definition</b>
BASE SCOPE	Means that part of the Work as more particularly described in the Scope of Work to be undertaken by the Contractor in accordance with the Contract prior to the issue of the Notice to Proceed.
COMPANY	Woodside Energy Ltd.
CONTRACTOR	Saipem Australia Pty Ltd.
EXECUTE SCOPE OF WORK	Means the Work (including the supply of all materials, services, equipment and deliverables) that the Contractor is required to carry out in accordance with the provisions of the Contract if the Notice to Proceed is issued in accordance with the Contract , as more particularly described in the Scope of Work, including the Execute Scope of Work Options (if instructed in accordance with the Contract), but does not include the Separable Portions, if any.
SCOPE OF WORK	Means the Scope of the Work described in Section 3.1 (Scope of Work) of the Contract.
SUBCONTRACTOR	Any person appointed as a subcontractor for a part of the Work, whether directly by the Contractor or at a lower tier, and such person’s successors in title.

Table 1: Definitions

### 1.2 ABBREVIATIONS

<b>Abbreviation</b>	<b>Description</b>
AS/NZS	Australian and New Zealand Standards
C1	Castorone
ETL	Export Trunkline
FPU	Floating Production Unit
LNG	Liquified Natural Gas
NWS	North West Shelf
RBM	Riser Base Manifold
KP	Kilometre Point
LNG	Liquified Natural Gas
NWS	North West Shelf
PLET	Pipeline End Termination
PFD	Personal Floatation Device
PMT	Project Management Team
POB	Personnel On Board

<b>Revision:</b>	<b>A</b>	Page 3 of 13
<b>Date:</b>	<b>18/11/22</b>	



**WOODSIDE ENERGY LTD.**  
**Scarborough - ETL Coating and Installation - Execute**

<b>Document Title:</b>	<b>Scope of Work – Personal Protective Equipment (PPE)</b>
<b>Document No:</b>	<b>835038-SAI-HS-W-00003</b>

<b>Abbreviation</b>	<b>Description</b>
PPE	Personal Protective Equipment
RBM	Riser Base Manifold
SCATL	Scarborough Trunkline
SEND	Saipem Endeavour

Table 2: Abbreviations

<b>Revision:</b>	<b>A</b>	<b>Page 4 of 13</b>
<b>Date:</b>	<b>18/11/22</b>	



**WOODSIDE ENERGY LTD.**  
**Scarborough - ETL Coating and Installation - Execute**

<b>Document Title:</b>	<b>Scope of Work – Personal Protective Equipment (PPE)</b>
<b>Document No:</b>	<b>835038-SAI-HS-W-00003</b>

## 2 REFERENCES

SUBCONTRACTOR shall be committed to the execution of the work in compliance with the requirements of this document and all the documents referenced in this section. In the event of conflict between this document, and any other specifications, data sheets, codes, standards or regulations, SUBCONTRACTOR shall inform CONTRACTOR in writing and receive written clarification from the CONTRACTOR. If SUBCONTRACTOR wishes to propose qualifications, amendments, or deviations to any of the document in question, these shall be officially notified to CONTRACTOR for evaluation. These will be considered as the only deviations of the SUBCONTRACTOR from these documents. In addition to the industrial codes and standards listed below, SUBCONTRACTOR shall consider all the industrial codes and standards referenced inside all documents with the same applicability extent of the document where they are found referenced. Unless otherwise specified, wherever reference is made to Standards and Codes the latest edition or revision of the Standards or Codes shall apply.

### 2.1 CODES AND STANDARDS

No.	Document No.	Document Title	Rev
[1]	AS/NZS 1270	Acoustics - Hearing protectors	-
[2]	AS/NZS 1336	Eye and face protection - guidelines	-
[3]	AS/NZS 1337	Eye protectors for industrial applications	-
[4]	AS/NZS 1338.1	Filters for protection against radiation generated in welding and allied operations	-
[5]	AS/NZS 1338.2	Filters for protection against ultraviolet radiation	-
[6]	AS/NZS 1906.4	High visibility materials for safety garments	-
[7]	AS/NZS 4602	High visibility safety garments	-
[8]	AS 2919	Industrial clothing	-
[9]	AS/NZS 4501.1	Occupational protective clothing - Guidelines on the selection, use, care and maintenance of protective clothing	-
[10]	AS/NZS 2210.7	Occupational protective footwear - Additional specification for safety footwear	-
[11]	AS/NZS 2210.2	Occupational protective footwear - Requirements and test methods	-
[12]	AS/NZS 2210.3	Occupational protective footwear - Specification for safety footwear	-
[13]	AS/NZS 2161.1	Occupational protection gloves - Selection, use and maintenance	-

<b>Revision:</b>	<b>A</b>	Page 5 of 13
<b>Date:</b>	<b>18/11/22</b>	



**WOODSIDE ENERGY LTD.**  
**Scarborough - ETL Coating and Installation - Execute**


<b>Document Title:</b>	<b>Scope of Work – Personal Protective Equipment (PPE)</b>
<b>Document No:</b>	<b>835038-SAI-HS-W-00003</b>

<b>No.</b>	<b>Document No.</b>	<b>Document Title</b>	<b>Rev</b>
[14]	AS/NZS 1801	Occupational protective helmets	-
[15]	AS/NZS 1716	Respiratory protection devices	-
[16]	AS/NZS 2210	Safety footwear	-
[17]	AS/NZS 1715	Selection, use and maintenance of respiratory protective devices	-
[18]	AS/NZS 1337	Eye Protectors for Industrial Applications	

**Table 3: Codes and Standards**

**Table 4: Contractor Documents**

<b>Revision:</b>	<b>A</b>	<b>Page 6 of 13</b>
<b>Date:</b>	<b>18/11/22</b>	

	<b>WOODSIDE ENERGY LTD.</b> <b>Scarborough - ETL Coating and Installation - Execute</b>	
	<b>Document Title:</b>	<b>Scope of Work – Personal Protective Equipment (PPE)</b>
	<b>Document No:</b>	<b>835038-SAI-HS-W-00003</b>

### 3 GENERAL

#### 3.1 PROJECT OVERVIEW

The Scarborough Gas Field is in permit WA-61-L, approximately 380km West Northwest of the Burrup Peninsula in the Northwest of Australia and includes recoverable reserves of approximately 11 Tcf in 900 - 950m water depth. Joint venture participants are Woodside Energy Ltd (73.5%, Operator) and BHP Ltd (26.5%). The Scarborough Trunkline (SCATL) will transport dry gas between the Scarborough Floating Production Unit (FPU) and the Pluto LNG Plant. The trunkline is a Hybrid 36" / 32" Configuration with 36" from Pluto LNG Plant to KP 200 and then 32" from KP 200 to KP 433 with termination in the PLET at Scarborough Field with an approximate total route length of 433km. The SCATL route from the FPU to the Pluto LNG Plant is illustrated in Figure 1 below.

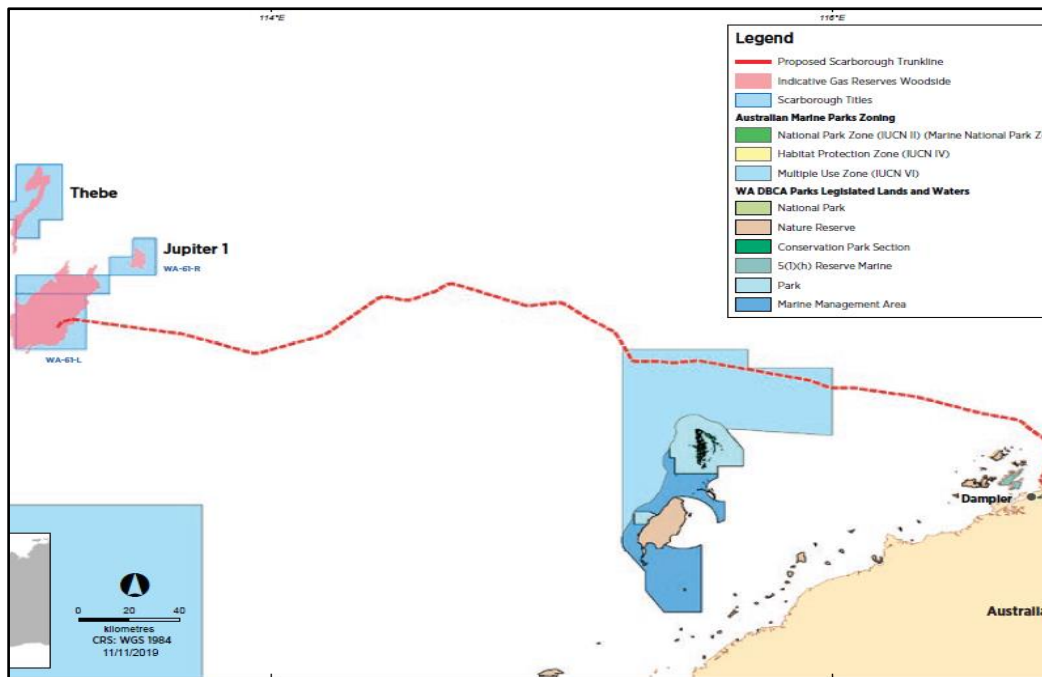



Figure 1: Scarborough SCATL Route

The SCATL begins adjacent to a single Riser Base Manifold (RBM) at the FPU. The RBM allows for a degree of isolation between the SCATL and the risers to the FPU as well as providing connection points for future subsea pig receivers/launchers if required. Between the FPU and the Pluto Platform the SCATL will navigate deep water (approximately 1,400m and the slope between the deep water and the Australian continental shelf. The SCATL route involves the crossing of Other Operator’s pipelines and fibre optic cables. Between the Pluto Platform and the Pluto LNG Plant the SCATL route will follow the existing Pluto trunkline (approximately 100m separation to the south). The SCATL route within Mermaid Sound is restricted by several constraints such as spoil grounds, the NWS Shipping Channel, the Pluto Shipping Channel, Pluto loading jetty and associated turning basin and shore crossing at the Pluto LNG Plant.

<b>Revision:</b>	<b>A</b>	Page 7 of 13
<b>Date:</b>	<b>18/11/22</b>	

	<b>WOODSIDE ENERGY LTD.</b> <b>Scarborough - ETL Coating and Installation - Execute</b>	
	<b>Document Title:</b>	<b>Scope of Work – Personal Protective Equipment (PPE)</b>
	<b>Document No:</b>	<b>835038-SAI-HS-W-00003</b>


### 3.2 PURPOSE OF DOCUMENT

This document presents the SUBCONTRACTOR Scope of Work (SOW) to supply additional Personal Protective Equipment (PPE) for CONTRACTOR personnel working on the on the SCATL Installation Project.

This document shall not be considered as a stand-alone document and shall be read in conjunction with all the referenced documents listed in Section 2.

<b>Revision:</b>	<b>A</b>	Page 8 of 13
<b>Date:</b>	<b>18/11/22</b>	



	<b>WOODSIDE ENERGY LTD.</b> <b>Scarborough - ETL Coating and Installation - Execute</b>	
	<b>Document Title:</b>	<b>Scope of Work – Personal Protective Equipment (PPE)</b>
	<b>Document No:</b>	<b>835038-SAI-HS-W-00003</b>

## 4 SCOPE OF WORK

SUBCONTRACTOR is requested to submit a proposal for the following scope of works:

- Provide PPE as requested by CONTRACTOR for the Offshore Construction & Marine Crew and the Project Management Team (PMT) for the duration of the Project in accordance with the referenced documents in Section 2 of this Scope of Work.
- Define a specific PPE strategy for each Project Vessel & Office based personnel for quantity and sizes.
- The Cost of PPE and delivery to both the Perth office and Project Site Laydown Area (Dampier) with estimation of time.

### 4.1 PACKING AND DELIVERY

All goods shall be prepared for shipping in accordance with Australian Quarantine requirements and Australian Standards. It must have suitable protection and support and avoid any damage during handling and transportation. The packaging must be suitable for manual handling and not weigh more than 20kg per item. CONTRACTOR is to be made aware of the PPE supplied of its origin being local or sourced internationally.

<b>Revision:</b>	<b>A</b>	Page 9 of 13
<b>Date:</b>	<b>18/11/22</b>	



**WOODSIDE ENERGY LTD.**  
**Scarborough - ETL Coating and Installation - Execute**

<b>Document Title:</b>	<b>Scope of Work – Personal Protective Equipment (PPE)</b>
<b>Document No:</b>	<b>835038-SAI-HS-W-00003</b>

## 5 PROJECT VESSELS & OFFICE

Table 5 and **Error! Reference source not found.** below present the project vessels / sites and the length of time that they will be.

### 5.1 CONTRACTOR SITES

Site	Scope of Works	POB
Saipem Endeavour (SEND)	Nearshore pipelay	Approx. 300
Castorone (C1)	Offshore pipelay and subsea structure installation	Approx. 530
Perth Office	Offshore Visits / Inspections	Approx. 35

Table 5: Contractor Sites


### 5.2 SCHEDULE OF KEY DATES

SUBCONTRACTOR shall consider the following key dates below for consideration of current stock and supply and demand in the industry. The start dates shown in Table 6 below are subject to change based on a ‘collapsing window mechanism’, which will be advised through COMPANY Site Instruction and Notification. The finish dates (TBC) can vary and are based on start date, pipeline installation rates, weather downtime etc. SUBCONTRACTOR SOW Award Target Date is January / February 2023.

Offshore Activity	Earliest Start Date	Latest Start Date	Project Duration
<b><u>Campaign 1 – SEND Scope (Near Shore):</u></b>	1 July 2023	1 September 2023	~45 days
<b><u>Campaign 2 – C1 Scope (Offshore):</u></b>	1 November 2023	1 January 2024	~6 months

Table 6: Schedule of Key Dates

<b>Revision:</b>	<b>A</b>	Page 10 of 13
<b>Date:</b>	<b>18/11/22</b>	

	<b>WOODSIDE ENERGY LTD.</b> <b>Scarborough - ETL Coating and Installation - Execute</b>	
	<b>Document Title:</b>	<b>Scope of Work – Personal Protective Equipment (PPE)</b>
	<b>Document No:</b>	<b>835038-SAI-HS-W-00003</b>

## 6 QUALITY AND HSE REQUIREMENTS

### 6.1 QUALITY REQUIREMENTS


SUBCONTRACTOR is required to provide, together with its offer, the ISO 9001:2015 Certificate. SUBCONTRACTOR shall adopt a Quality Assurance (QA) and Quality Control (QC) system in accordance to Section 2 and relevant Contract requirements and shall impose the same requirements on its Sub-SUBCONTRACTORS (Vendors). SUBCONTRACTOR shall set up and maintain QA/QC and inspection systems to ensure that all requirements of this specification and those stated in the CONTRACTOR referenced documents are satisfied.

### 6.2 HSE REQUIREMENTS

CONTRACTOR prioritises its Health, Safety and Environmental (HSE) responsibilities and expects any VENDOR as well as their Sub-vendors to also uphold the highest standards of safety, for both personnel and the environment. SUBCONTRACTOR shall be well informed of and abide by the local legislation and regulations concerning HSE issues and shall comply with these in all operations concerning the supply of PPE. SUBCONTRACTOR shall further ensure throughout the SOW that all hazards have been identified, risks assessed and the appropriate measures to protect personnel, environment and that plans have been put in place and implemented.

All reasonable precautions shall be taken for the protection of the workers and of the members of public and property that might be affected by the SOW.

<b>Revision:</b>	<b>A</b>	Page 11 of 13
<b>Date:</b>	<b>18/11/22</b>	

	<b>WOODSIDE ENERGY LTD.</b> <b>Scarborough - ETL Coating and Installation - Execute</b>	
	<b>Document Title:</b>	<b>Scope of Work – Personal Protective Equipment (PPE)</b>
	<b>Document No:</b>	<b>835038-SAI-HS-W-00003</b>

## 7 REQUIRED DOCUMENTATION AND REPORTING

The documentation that shall be provided by SUBCONTRACTOR for technical evaluation during the bidding phase, and during the project execution is listed in the following sections. To be noted that the following list of documentation to be issued by the selected SUBCONTRACTOR during the project execution phase is a typical to show the minimum information required. Such list shall be finalized and agreed between the parties (awarded SUBCONTRACTOR and CONTRACTOR) after contract award. The items reported in the list can be grouped as applicable depending on the SUBCONTRACTOR preferences.

### 7.1 DOCUMENTATION DURING BID PHASE

The following documents shall be provided as minimum as part of the SUBCONTRACTOR proposal:

- HSE documentation as per Section 2 of the present document.
- Quality Plan.
- Quality system ISO certification or Quality Manual addressing ISO 9001:2008.
- List of qualifications and deviations.

### 7.2 DOCUMENTATION DURING PROJECT PHASE

The following documents shall be provided as minimum during project phase:

- Manufacturer’s Certificate of Conformity (CoC) / Material certificates.
- CONTRACTOR reserves its right to require at any stage of the project the issue of any other document deemed necessary.

<b>Revision:</b>	<b>A</b>	Page 12 of 13
<b>Date:</b>	<b>18/11/22</b>	



**WOODSIDE ENERGY LTD.**  
**Scarborough - ETL Coating and Installation - Execute**

<b>Document Title:</b>	<b>Scope of Work – Personal Protective Equipment (PPE)</b>
<b>Document No:</b>	<b>835038-SAI-HS-W-00003</b>

## **8 PROJECT CONTROLS**

### **8.1 INVOICING AND PAYMENT PROCESS**

Prior to submitting invoices, we need to receive and approve a payment certificate, this approved payment certificate will be sent back to the SUBCONTRACTOR along with a Service Entry Number. Both the approved payment certificate and the Service Entry number along with the Purchase Order number need to be sent along with the invoice when it is submitted. All milestone payments related to deliverables need to include the appropriate backup (e.g., relevant purchase order, material receipt, etc.)

<b>Revision:</b>	<b>A</b>	<b>Page 13 of 13</b>
<b>Date:</b>	<b>18/11/22</b>	