

EXPRESSION OF INTEREST (EOI)

Package Title	Southern Basins Production Bore Pumping Tests
Package Reference	N-2010c
Package Description	<p>Production Bore Pumping Test Contract:</p> <ul style="list-style-type: none"> ▪ Pumping testing of up to fifteen (15) production bores, across five (5) bore clusters – “BCA”, “BCB”, “BCB”, “BCD” and “BCF”: <ul style="list-style-type: none"> - Pumping testing of up to three (3) 10 inch groundwater production bores per cluster, installed to depths ranging between 125 – 220 mBGL. - A summary of the proposed production bore target depths are provided in Table 1. ▪ Works include: <ul style="list-style-type: none"> - Undertake a 4 stage (2hrs per stage) step test to determine well efficiency across all production bores. - Nominal rates for the step tests are 8, 12, 16 & 20 L/s. - Initial heads are approximately 20 m below ground level. - Undertake a 1 week constant rate test at one production bore per cluster. - Contractor to accurately record test well water level, flow rate and cumulative volume records for each pumping test. - Contractor to provide digital data for pumping test records in an excel format. - Contractors shall nominate their capacity for the supply and operations of remote camp facilities for the duration of the campaign.
Key Information to be included in the EOI	Interested parties will provide resources that illustrate their capabilities specific to the contract on offer; and demonstrate their industry performance and compliance with/to Health, Safety, Environmental and Quality Management systems.

Arafura Resources Limited | ABN: 22 080 933 455

Perth Address:

Level 6, 432 Murray St, Perth WA 6000
PO Box 5773, St Georges Terrace, Perth WA 6831

Darwin Address:

Unit 34, 119 Reichardt Rd, Winnellie NT 0820
PO Box 37220, Winnellie NT 0821



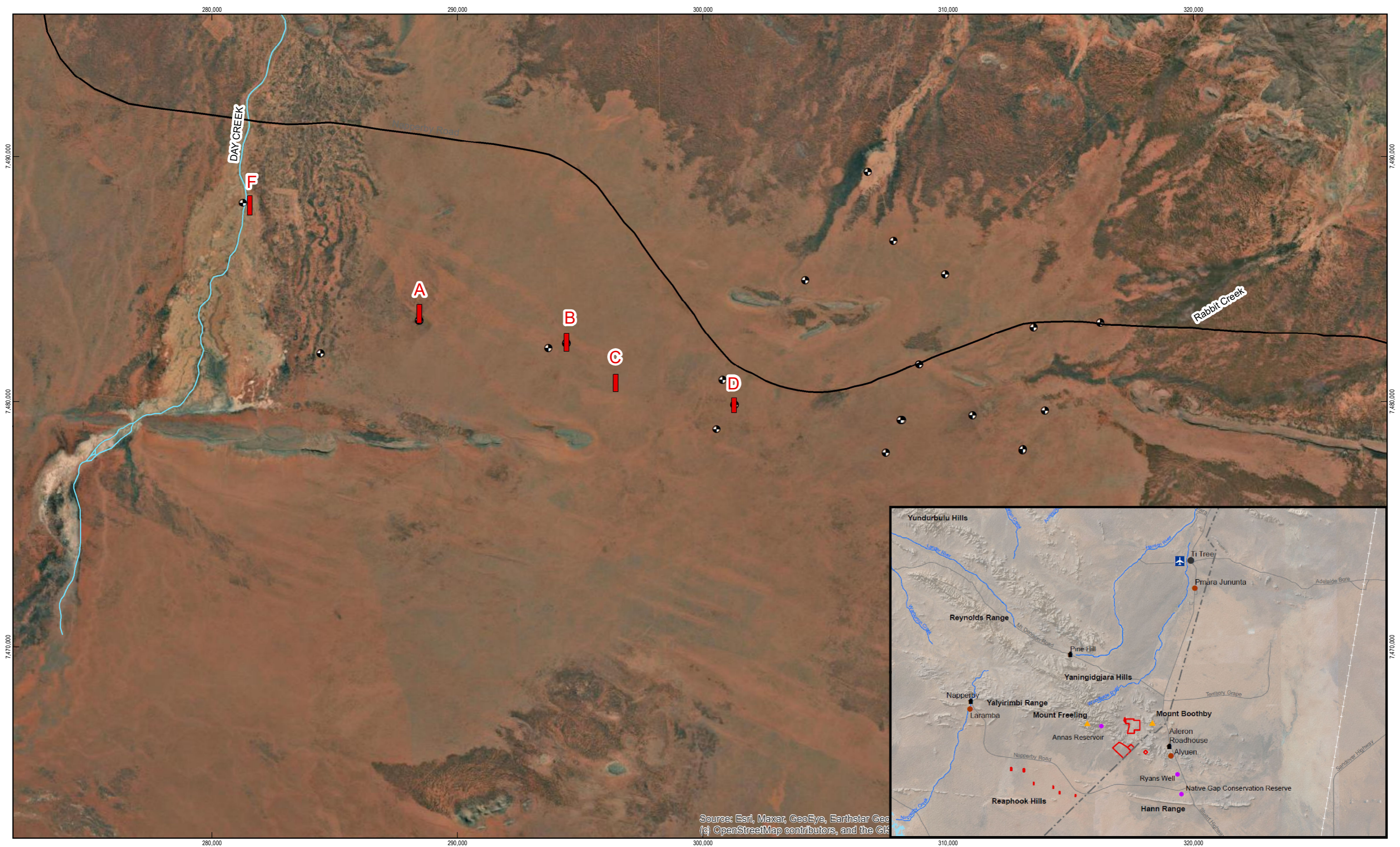
T: +61 8 6370 2800 | **W:** www.arultd.com | **E:** arafura@arultd.com

Key Milestones	<p><i>Forecast Request for Quotation/Tender release date:</i></p> <p>July, 2022</p> <p><i>Forecast Award date:</i></p> <p>September, 2022</p>
Approximate Value	Construction Contract < AU\$ 500K
Approximate Duration	3 Months
Expression of Interest	<p>[Contractors / Suppliers] are invited to express an interest in this [scope of work / package] by registering on the ICN Gateway online platform.</p> <p>Prior to completing registration, please ensure:</p> <ul style="list-style-type: none"> ▪ The company profile on ICN Gateway is complete, up-to-date and accurate ▪ Interest is registered as either full-, or partial-, scope of this EOI (where applicable) ▪ ICN Gateway pre-qualification questions have been completed
EOI Closing Date	30 th June 2022
Contact	<p>Industry Capability Network of Northern Territory</p> <p>https://gateway.icn.org.au/</p>
Project URL	<p>For more information about Arafura Resources Ltd and the Nolans Rare Earths Project please refer to the Company website.</p> <p>https://www.arultd.com/</p>
Disclaimer:	<p><i>This EOI will be used, in part, to establish a list of potential tenderers, providing a general understanding of their capabilities to execute the scope outlined. The EOI will be coupled with subsequent steps and stages in the tender process to be adopted by Arafura Resources Ltd (the "Company"), and applicants' response to this EOI shall not form any part of a commitment or agreement with or on behalf of the Company to proceed or contract with responding parties.</i></p> <p><i>The relevant package details outlined above, and/or scale of scope for this package may be subject to change at the discretion of the Company.</i></p>
Project:	Nolans Rare Earths Project (the "Project")
Project Overview:	<p>Arafura Resources Ltd is developing the Nolans Rare Earths project, which will encompass a mine, beneficiation plant, extraction plant, separation plant, sulphuric acid plant and related Non-Process Infrastructure to be constructed in the Northern Territory. The project site is located on Aileron Station, approximately 135 kilometres NW of Alice Springs. The production bores are</p>

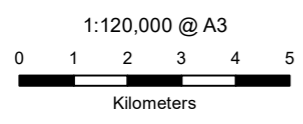
	<p>located on both Aileron Station and the adjacent Napperby Station (12581389 – FIG001) attached.</p> <p>The Project mining operation will use conventional open-pit truck and excavator mining methods, supplemented by drill and blasting for ore and waste. A JORC-compliant Ore Reserve supports a mining inventory for a mine life of 38 years. Mining is at an average rate of 7.6 million tonnes per annum to produce 1 to 1.3 million tonnes of ROM ore each year and 316,000 tpa of concentrate through the hydrometallurgical plant to produce a range of rare earth products and a phosphoric acid by-product.</p>
Date:	10 June 2022

Table 1 Production Bore Concept

Proposed Bore ID	Cluster	Easting	Northing	Top of Screen	Base of Screen	S.S. Screen Length
BCA_P1	A	288442	7483232	120	174	54
BCA_P2	A	288550	7483594	120	174	54
BCA_P3	A	288377	7483919	180	216	36
BCB_P1	B	294374	7482770	109	163	54
BCB_P3	B	294372	7482077	109	163	54
BCB_P2	B	294514	7482376	169	205	36
BCC_P1	C	296383	7480430	137	185	48
BCC_P3	C	296386	7481060	137	185	48
BCC_P2	C	296505	7480776	185	221	36
BCD_P1	D	301217	7480119	76	124	48
BCD_P2	D	301204	7479572	76	124	48
BCD_P3	D	301347	7479825	130	166.	36
BCF_P1	F	281492	7488046	100	154	54
BCF_P2	F	281635	7488378	99.6	154	54
BCF_P3	F	281631	7487620	159.6	196	36



Source: Esri, Maxar, GeoEye, Earthstar Geo
 (c) OpenStreetMap contributors, and the GIS



LEGEND	
 Borefield Area	 Major Roads
 Creeks	+ Existing Bores



Arafura Resources Limited
 RFP Borefield Drilling

Job Number	12581389
Revision	B
Date	25 May 2022

Borefield Overview

Figure 01