

EXPRESSION OF INTEREST (EOI)

Package Title	Southern Basin Borefield Drilling
Package Reference	N-2010a
Package Description	<p>Borefield Drilling Contract:</p> <ul style="list-style-type: none"> ▪ Development of five (5) bore clusters, 'BCA', 'BCB', 'BCC', 'BCD' and 'BCF', with bore cluster groundwater infrastructure spread across a 100 x 300 m area. In summary, up to 28 bores are proposed as per the following: <ul style="list-style-type: none"> - Up to fifteen (15) groundwater production bores, with up to three (3) bores installed per cluster, with approximately ~2.5 km of total drilling proposed. - Up to thirteen (13) monitoring bores, installed across the five bore clusters, with approximately ~2.0 km of total drilling proposed. - A summary of the proposed borefield drilling is provided in Table 1 and Table 2. ▪ Works include: <ul style="list-style-type: none"> - Drilling in accordance with the NT Water Act, executed by an NT licensed / registered water driller - Drilling of all water production bores with allowance for geophysical survey prior to casing installation. - Primary advancement of locations with mud rotatory drilling, suitable for installation of 10 inch (DN250) groundwater production bores and 2 inch (DN50) monitoring bores. - Supply, installation and development of production bores as per conceptual production bore design (12581389 – FIG001) attached: utilising steel bore casing and stainless steel screens. - Supply, installation and development of monitoring bore as per conceptual monitoring bore design (12581389 – FIG02) attached: utilising uPVC casing and screens. - Contractors shall nominate their capacity to supply and operate a remote camp facility for their workforce during the campaign.
Key Information to be included in the EOI	Interested parties will provide resources that illustrate their capabilities specific to the contract on offer; and demonstrate their industry performance and compliance with/to Health, Safety, Environmental and Quality Management systems.

Arafura Resources Limited | ABN: 22 080 933 455

Perth Address:

Level 6, 432 Murray St, Perth WA 6000
PO Box 5773, St Georges Terrace, Perth WA 6831

Darwin Address:

Unit 34, 119 Reichardt Rd, Winnellie NT 0820
PO Box 37220, Winnellie NT 0821



Key Milestones	<p><i>Forecast Request for Quotation/Tender release date:</i></p> <p>Early July, 2022</p> <p><i>Forecast Award date:</i></p> <p>September, 2022</p>
Approximate Value	Construction Contract: < AU\$10M
Approximate Duration	~8 Months total, potentially spread across two (2) campaigns
Expression of Interest	<p>[Contractors / Suppliers] are invited to express an interest in this [scope of work / package] by registering on the ICN Gateway online platform.</p> <p>Prior to completing registration, please ensure:</p> <ul style="list-style-type: none"> ▪ The company profile on ICN Gateway is complete, up-to-date and accurate ▪ Interest is registered as either full-, or partial-, scope of this EOI (where applicable) ▪ ICN Gateway pre-qualification questions have been completed
EOI Closing Date	22 nd June 2022
Contact	<p>Industry Capability Network of Northern Territory</p> <p>https://gateway.icn.org.au/</p>
Project URL	<p>For more information about Arafura Resources Ltd and the Nolans Rare Earths Project please refer to the Company website.</p> <p>https://www.arultd.com/</p>
Disclaimer:	<p><i>This EOI will be used, in part, to establish a list of potential tenderers, providing a general understanding of their capabilities to execute the scope outlined. The EOI will be coupled with subsequent steps and stages in the tender process to be adopted by Arafura Resources Ltd (the "Company"), and applicants' response to this EOI shall not form any part of a commitment or agreement with or on behalf of the Company to proceed or contract with responding parties.</i></p> <p><i>The relevant package details outlined above, and/or scale of scope for this package may be subject to change at the discretion of the Company.</i></p>
Project:	Nolans Rare Earths Project (the "Project")
Project Overview:	<p>Arafura Resources Ltd is developing the Nolans Rare Earths project, which will encompass a mine, beneficiation plant, extraction plant, separation plant, sulphuric acid plant and related Non-Process Infrastructure to be constructed in the Northern Territory. The project site is located on Aileron Station, approximately 135 kilometres NW of Alice Springs. The borefield clusters are</p>

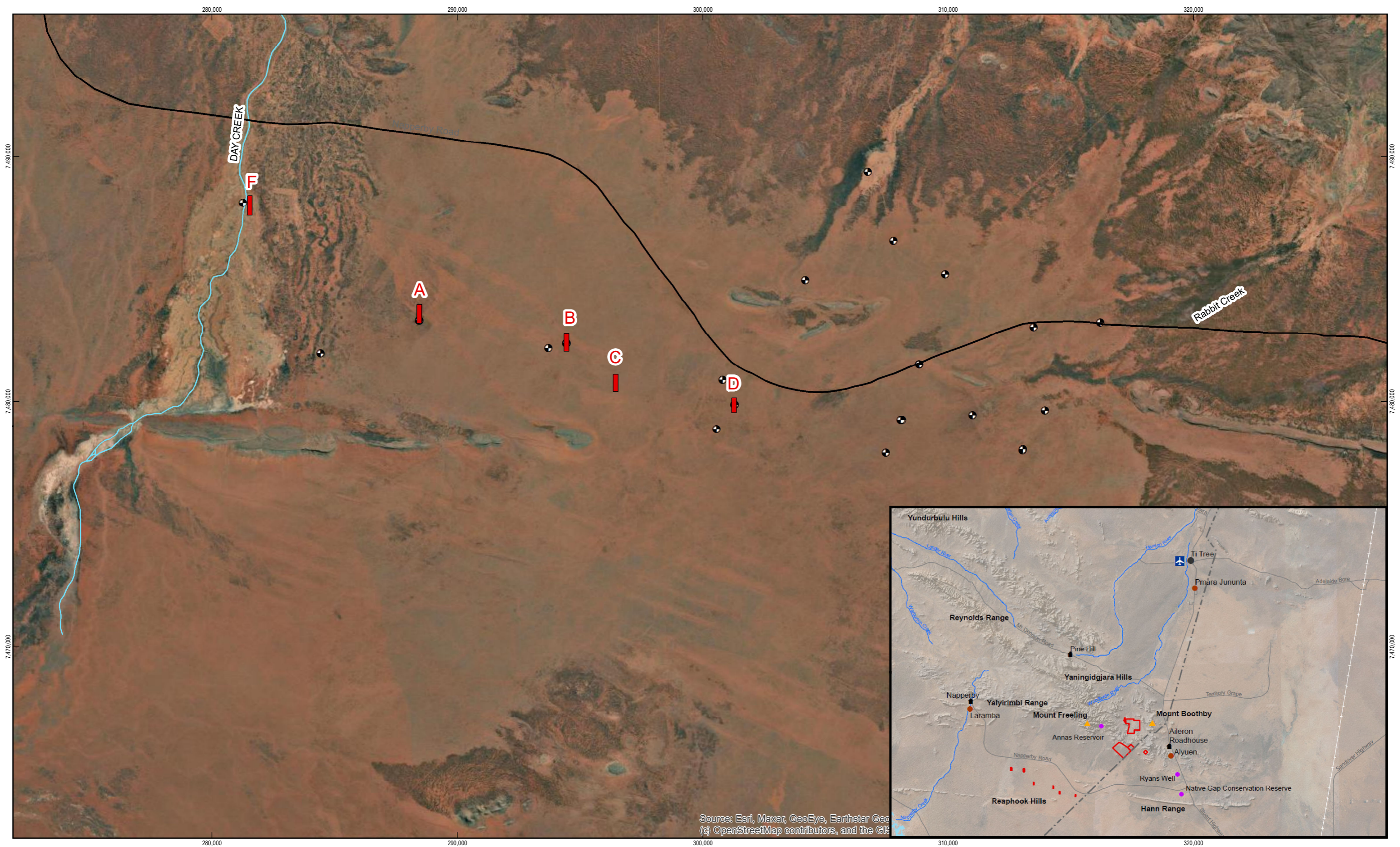
	<p>located on both Aileron Station and the adjacent Napperby Station (12581389 – FIG003 to FIG008) attached.</p> <p>The Project mining operation will use conventional open-pit truck and excavator mining methods, supplemented by drill and blasting for ore and waste. A JORC-compliant Ore Reserve supports a mining inventory for a mine life of 38 years. Mining is at an average rate of 7.6 million tonnes per annum to produce 1 to 1.3 million tonnes of ROM ore each year and 316,000 tpa of concentrate through the hydrometallurgical plant to produce a range of rare earth products and a phosphoric acid by-product.</p>
Date:	10 June 2022

Table 1 Production Bore Concept

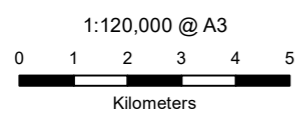
Proposed Bore ID	Cluster	Easting	Northing	Bore Type	Top of Screen	Base of Screen	EOH	S.S. Screen Length
BCA_P1	A	288442	7483232	Primary	120	174	175	54
BCA_P2	A	288550	7483594	Secondary	120	174	175	54
BCA_P3	A	288377	7483919	Tertiary	180	216	217	36
BCB_P1	B	294374	7482770	Primary	109	163	164	54
BCB_P3	B	294372	7482077	Secondary	109	163	164	54
BCB_P2	B	294514	7482376	Tertiary	169	205	206	36
BCC_P1	C	296383	7480430	Primary	137	185	184	48
BCC_P3	C	296386	7481060	Secondary	137	185	184	48
BCC_P2	C	296505	7480776	Tertiary	185	221	220	36
BCD_P1	D	301217	7480119	Primary	76	124	125	48
BCD_P2	D	301204	7479572	Secondary	76	124	125	48
BCD_P3	D	301347	7479825	Tertiary	130	166.	167	36
BCF_P1	F	281492	7488046	Primary	100	154	154	54
BCF_P2	F	281635	7488378	Secondary	99.6	154	155	54
BCF_P3	F	281631	7487620	Tertiary	159.6	196	197	36

Table 2 Monitoring Bore Summary

Proposed Bore ID	Cluster	Easting	Northing	EOH Depth
BCA_MT1	A	288368	7483594	175
BCA_MV	A	288536	7483928	217
BCB_MT1	B	294522	7482079	164
BCB_MV	B	294512	7482775	207
BCC_MT2	C	296389	7480787	36
BCC_MT1	C	296389	7480777	184
BCC_MV	C	296505	7481065	220
BCD_MT2	D	301356	7479585	36
BCD_MT1	D	301356	7479575	125
BCD_MV	D	301250	7479819	168
BCF_MT2	F	281486	7487632	48
BCF_MT1	F	281486	7487622	197
BCF_MV	F	281601	7488043	155



Source: Esri, Maxar, GeoEye, Earthstar Geo
 (c) OpenStreetMap contributors, and the GIS



Map Projection: Transverse Mercator
 Horizontal Datum: GDA 1994
 Grid: GDA 1994 MGA Zone 53



LEGEND

	Borefield Area		Major Roads		Creeks		Existing Bores
---	----------------	---	-------------	---	--------	---	----------------

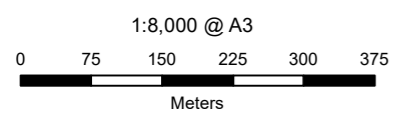


Arafura Resources Limited
 RFP Borefield Drilling

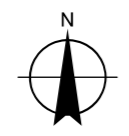
Job Number	12581389
Revision	B
Date	25 May 2022

Borefield Overview

Figure 03



Map Projection: Transverse Mercator
 Horizontal Datum: GDA 1994
 Grid: GDA 1994 MGA Zone 53



LEGEND

- + Proposed Monitoring Bores
- + Proposed Production Bores
- + 2022 Arafura Stratigraphy Bore
- Existing Groundwater Bore
- Borefield Area
- Major Roads
- Creeks



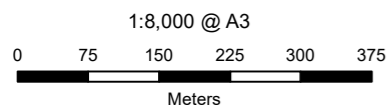
Arafura Resources Limited
 RFP Borefield Drilling

Borefield A

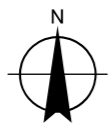
Job Number	12581389
Revision	B
Date	26 May 2022

Figure 04

G:\32112581389\GIS\Maps\Deliverables\4322875_BorefieldLayoutBCF_RevB.mxd
 © 2022. Whilst every care has been taken to prepare this map, GHD (and DATA CUSTODIAN) make no representations or warranties about its accuracy, reliability, completeness or suitability for any particular purpose and cannot accept liability and responsibility of any kind (whether in contract, tort or otherwise) for any expenses, losses, damages and/or costs (including indirect or consequential damage) which are or may be incurred by any party as a result of the map being inaccurate, incomplete or unsuitable in any way and for any reason.
 Data source: Data Custodian, Data Set Name/Title, Version/Date. Created by: fjohnson



Map Projection: Transverse Mercator
Horizontal Datum: GDA 1994
Grid: GDA 1994 MGA Zone 53



LEGEND

- + Proposed Monitoring Bores
- + Proposed Production Bores
- + 2022 Arafura Stratigraphy Bore
- + Existing Groundwater Bore
- Major Roads
- Creeks
- ▭ Borefield Area

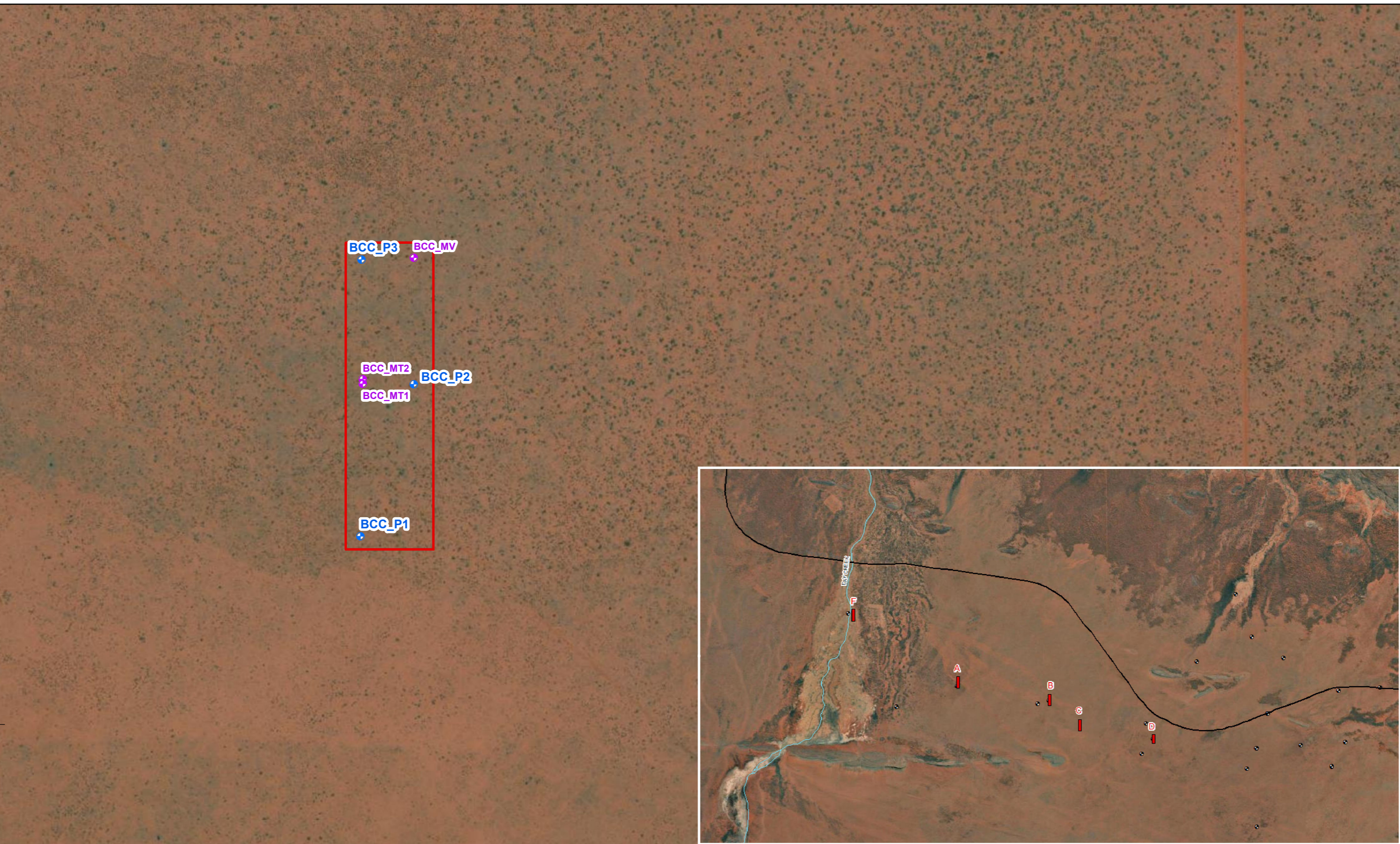


Arafura Resources Limited
RFP Borefield Drilling

Borefield B

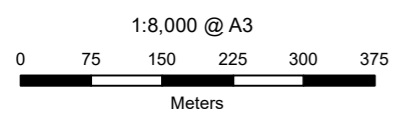
Job Number | 12581389
Revision | B
Date | 26 May 2022

Figure 05



7,480,000

7,480,000



Map Projection: Transverse Mercator
Horizontal Datum: GDA 1994
Grid: GDA 1994 MGA Zone 53



LEGEND

- + Proposed Monitoring Bores
- + Proposed Production Bores
- + 2022 Arafura Stratigraphy Bore
- Existing Groundwater Bore
- Major Roads
- Creeks
- Borefield Area

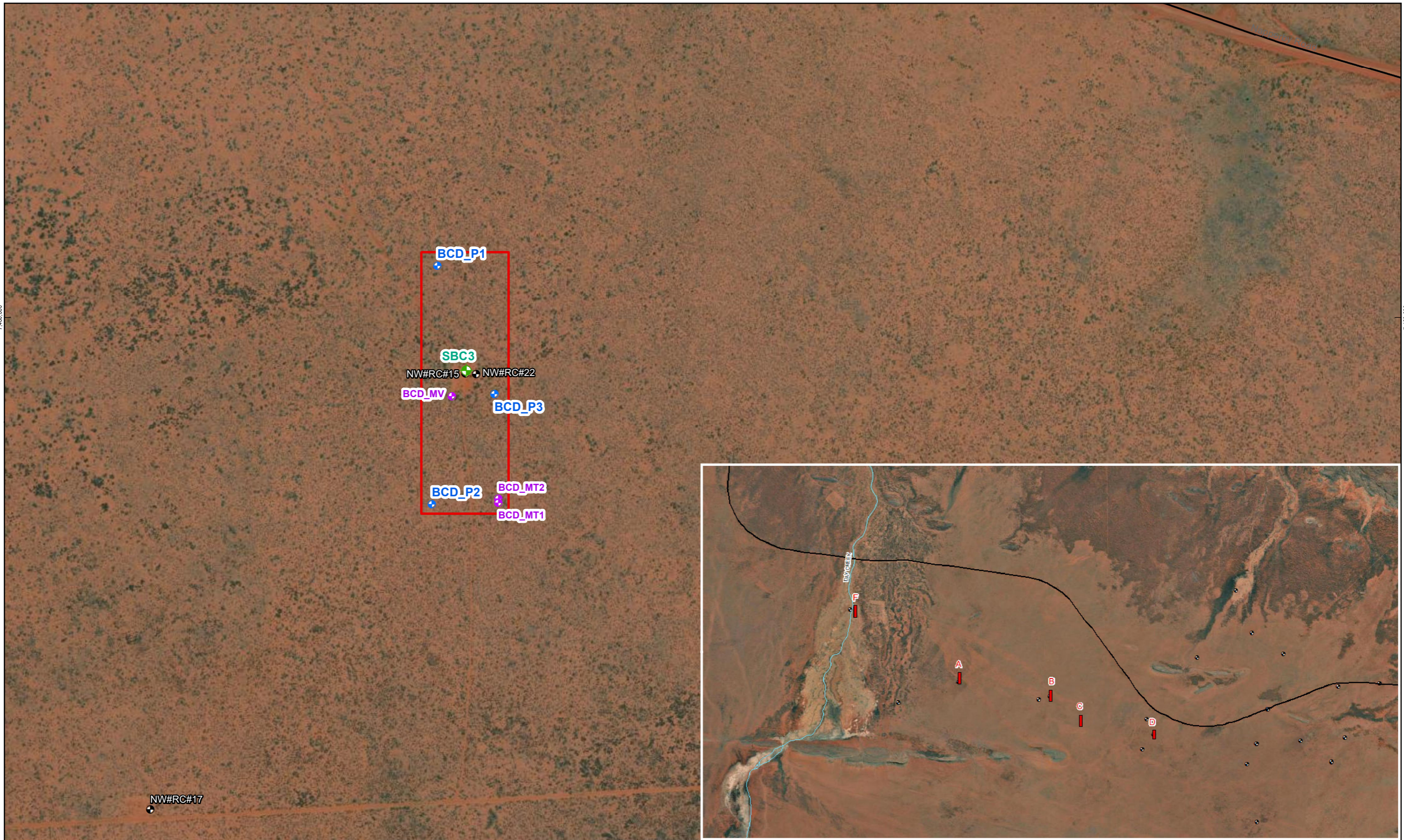


Arafura Resources Limited
RFP Borefield Drilling

Borefield C

Job Number	12581389
Revision	B
Date	26 May 2022

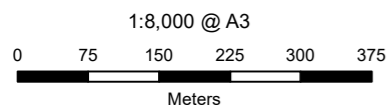
Figure 06



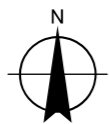
7,480,000

7,480,000

NW#RC#17



Map Projection: Transverse Mercator
Horizontal Datum: GDA 1994
Grid: GDA 1994 MGA Zone 53



LEGEND

- + Proposed Monitoring Bores
- + Proposed Production Bores
- + 2022 Arafura Stratigraphy Bore
- + Existing Groundwater Bore
- Major Roads
- Creeks
- Borefield Area



Arafura Resources Limited
RFP Borefield Drilling

Borefield D

Job Number | 12581389
Revision | B
Date | 26 May 2022

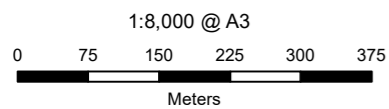
Figure 07

G:\32112581389\GIS\Maps\Deliverables\4322875_BorefieldLayoutBCF_RevB.mxd

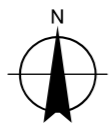
© 2022. Whilst every care has been taken to prepare this map, GHD (and DATA CUSTODIAN) make no representations or warranties about its accuracy, reliability, completeness or suitability for any particular purpose and cannot accept liability and responsibility of any kind (whether in contract, tort or otherwise) for any expenses, losses, damages and/or costs (including indirect or consequential damage) which are or may be incurred by any party as a result of the map being inaccurate, incomplete or unsuitable in any way and for any reason.

Data source: Data Custodian, Data Set Name/Title, Version/Date. Created by: fjohnson

2 Salamanca Square Hobart TAS 7000 Australia T 61 3 6210 0600 F 61 3 6210 0601 E hbamail@ghd.com W www.ghd.com



Map Projection: Transverse Mercator
Horizontal Datum: GDA 1994
Grid: GDA 1994 MGA Zone 53



LEGEND

- + Proposed Monitoring Bores
- + Proposed Production Bores
- + 2022 Arafura Stratigraphy Bore
- + Existing Groundwater Bore
- Borefield Area
- Major Roads
- Creeks



Arafura Resources Limited
RFP Borefield Drilling

Borefield F

Job Number	12581389
Revision	B
Date	26 May 2022

Figure 08

G:\32112581389\GIS\Maps\Deliverables\4322875_BorefieldLayoutBCF_RevB.mxd

© 2022. Whilst every care has been taken to prepare this map, GHD (and DATA CUSTODIAN) make no representations or warranties about its accuracy, reliability, completeness or suitability for any particular purpose and cannot accept liability and responsibility of any kind (whether in contract, tort or otherwise) for any expenses, losses, damages and/or costs (including indirect or consequential damage) which are or may be incurred by any party as a result of the map being inaccurate, incomplete or unsuitable in any way and for any reason.

Data source: Data Custodian, Data Set Name/Title, Version/Date. Created by: fjohnson

2 Salamanca Square Hobart TAS 7000 Australia T 61 3 6210 0600 F 61 3 6210 0601 E hbamail@ghd.com W www.ghd.com