

Nolans Project Roadshow

March 2022





Disclaimer

This presentation has been prepared by Arafura Resources Limited (Arafura, Arafura Resources or the Company) and is of a summary form only and therefore contains general background information which may not be complete. It should be read in conjunction with, and full review made of Arafura Resources' disclosures and releases lodged with the Australian Securities Exchange (ASX) and available at www.asx.com.au.

This presentation contains certain statements which may constitute "forward-looking statements." Such statements are only expectations or beliefs and are subject to inherent risks and uncertainties which could cause actual values, results or performance achievements to differ materially from those expressed or implied in this presentation. No representation or warranty, express or implied is made by Arafura Resources that any forward-looking statement contained in this presentation will occur, be achieved or prove to be correct. You are cautioned against relying upon any forward-looking statement.

Except for statutory liability which cannot be excluded, each of Arafura Resources and its related body corporates and their officers, employees and advisers expressly disclaims any responsibility for the accuracy or completeness of the material contained in this presentation and excludes all liability whatsoever (including in negligence) for any loss or damage which may be suffered by any person as a consequence of any information in this presentation or any error in it or omission from it. Arafura Resources accepts no responsibility to update any person regarding any inaccuracy, omission or change in information in this presentation or any other information made available to a person, nor any obligation to furnish the person with any further information.

This presentation does not constitute an offer of any securities in Arafura Resources, in any jurisdiction, nor an invitation to apply for such securities, in any jurisdiction, and will not form part of any contract for the acquisition of Arafura shares. This presentation does not provide investment advice or financial product advice. You should obtain professional advice and carry out your own independent investigations and assessment of the information in this presentation (including any assumptions) before acting.

Information in this presentation which is attributed to a third-party source has not been checked or verified by Arafura Resources.

Mineral Resources and Ore Reserves

The information in this presentation that relates to Mineral Resources is extracted from the Company's ASX announcement dated 7 June 2017 (Detailed Resource Assessment Completed) and was completed in accordance with the guidelines of the JORC Code (2012). The information in this presentation that relates to Ore Reserves is extracted from the Company's ASX announcement dated 16 March 2020 (Major Increase in Mine Life for the Nolans Project) and was completed in accordance with the guidelines of the JORC Code (2012). Arafura Resources confirms that it is not aware of any new information or data that materially affects the information included in the original market announcements and that all material assumptions and technical parameters underpinning the estimates in the original market announcements continue to apply and have not materially changed. Arafura Resources confirms that the form and context in which the Competent Person's findings are presented have not been materially modified from the original market announcements.

Production Targets and Forecast Financial Information

The information in this presentation that relates to production targets and financial information is extracted from the Company's ASX announcement dated 11 May 2021 (Nolans Project Update). The production target is based on 12% Proved Reserves, 62% Probable Reserves and 26% inferred resources as reported in the Company's ASX announcement dated 11 May 2021. There is a low level of geological confidence associated with inferred mineral resources and there is no certainty that further exploration work will result in the determination of indicated mineral resources or that the production target itself will be realised. Arafura confirms that all material assumptions underpinning the production target and forecast financial information derived from the production target set out in the Company's ASX announcement dated 11 May 2021 (including any assumptions referred to in the Company's ASX announcement dated 11 May 2021 that were used from the DFS as set out in the Company's ASX announcement dated 7 February 2019 (Nolans Project Definitive Feasibility Study) or from the Updated Mining Study as set out in the Company's ASX announcement dated 16 March 2020 (Major Increase in Mine Life for the Nolans Project)), continue to apply and have not materially changed.

Agenda

- 1 Team Introduction**
- 2 Overview of Rare Earths and the Nolans Project**
- 3 Environmental, Sustainability and Community**
- 4 Project Delivery**
- 5 Project Operations**
- 6 Questions**

Arafura Resources



Arafura Resources Cultural Awareness Workshop, August 2021

- ✓ Stewart Watkins
General Manager Projects

- ✓ Michael Robinson
ESG Manager

- ✓ Sam Binnie
Project Manager
Non-process Infrastructure

Nolans Project

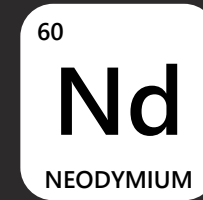


Rare Earths

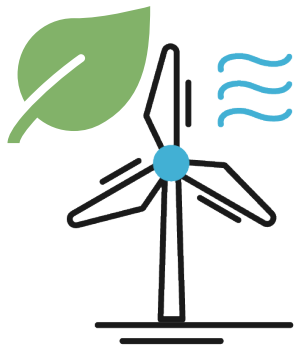
Rare Earths are essential to building a clean energy future. The transformation of the global economy relies on a secure and long-term supply



The Nolans Project contains all the Rare Earths but is particularly enriched in the 'Magnet Feed' Rare Earths NdPr



The fastest growing market for NdPr is in NdFeB Magnets. They are one of the reasons why everyday items have become smaller, lighter, mobile, more efficient and more affordable.



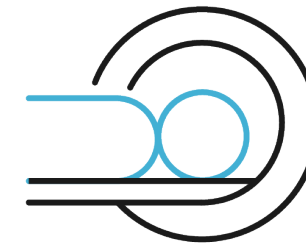
WIND
TURBINES



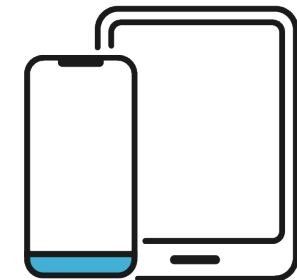
ROBOTS



ELECTRIC
VEHICLES



MRI
MACHINES



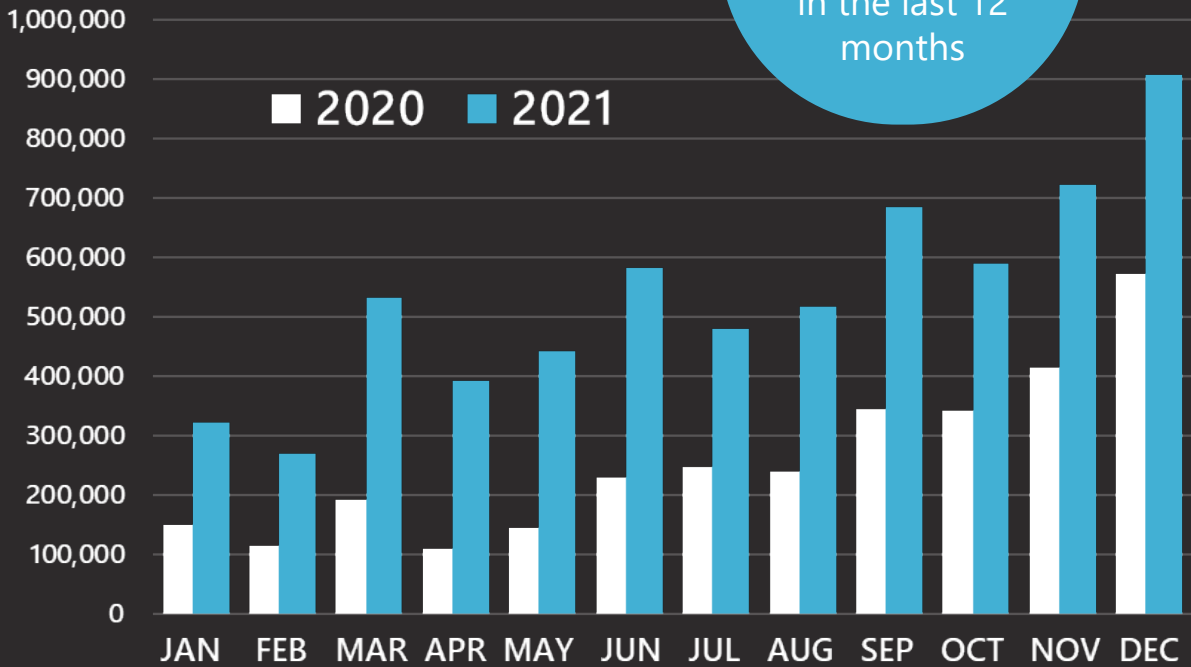
PHONES &
TABLETS



(ASX:ARU)

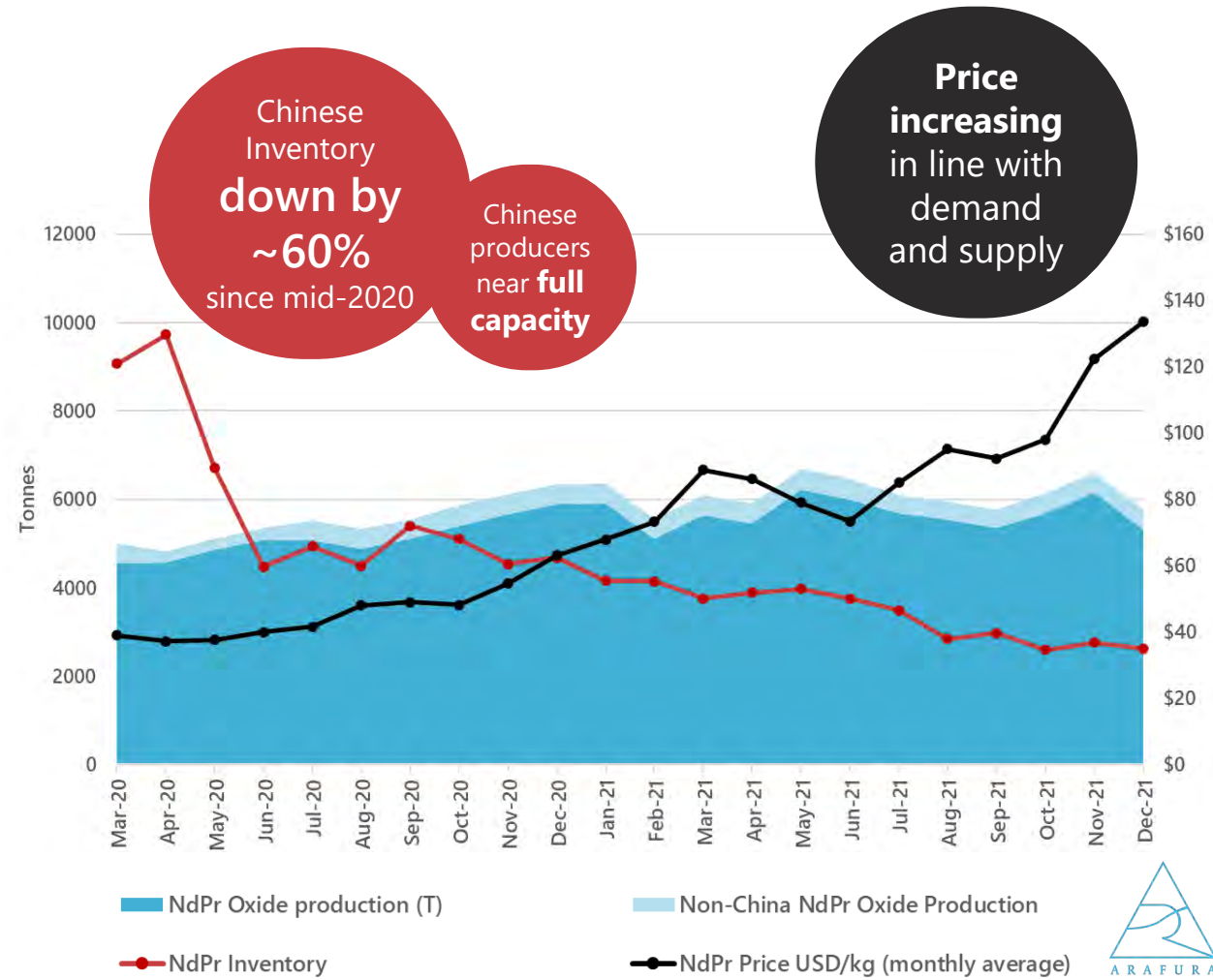
Global EV Sales (BEV+PHEV)

EV Sales have **DOUBLED** in the last 12 months



Source: EV Volumes, Inside EV

NdPr Price Rise



Source: Lynas, BAINFO, Asian Metals



(ASX:ARU)

Overview of Nolans Project

Globally Strategic



Shovel ready project



100% Australian Domiciled



~**A\$1 billion** investment to develop & build



135 kilometres from Alice Springs



~**A\$200 million** annual cost to operate



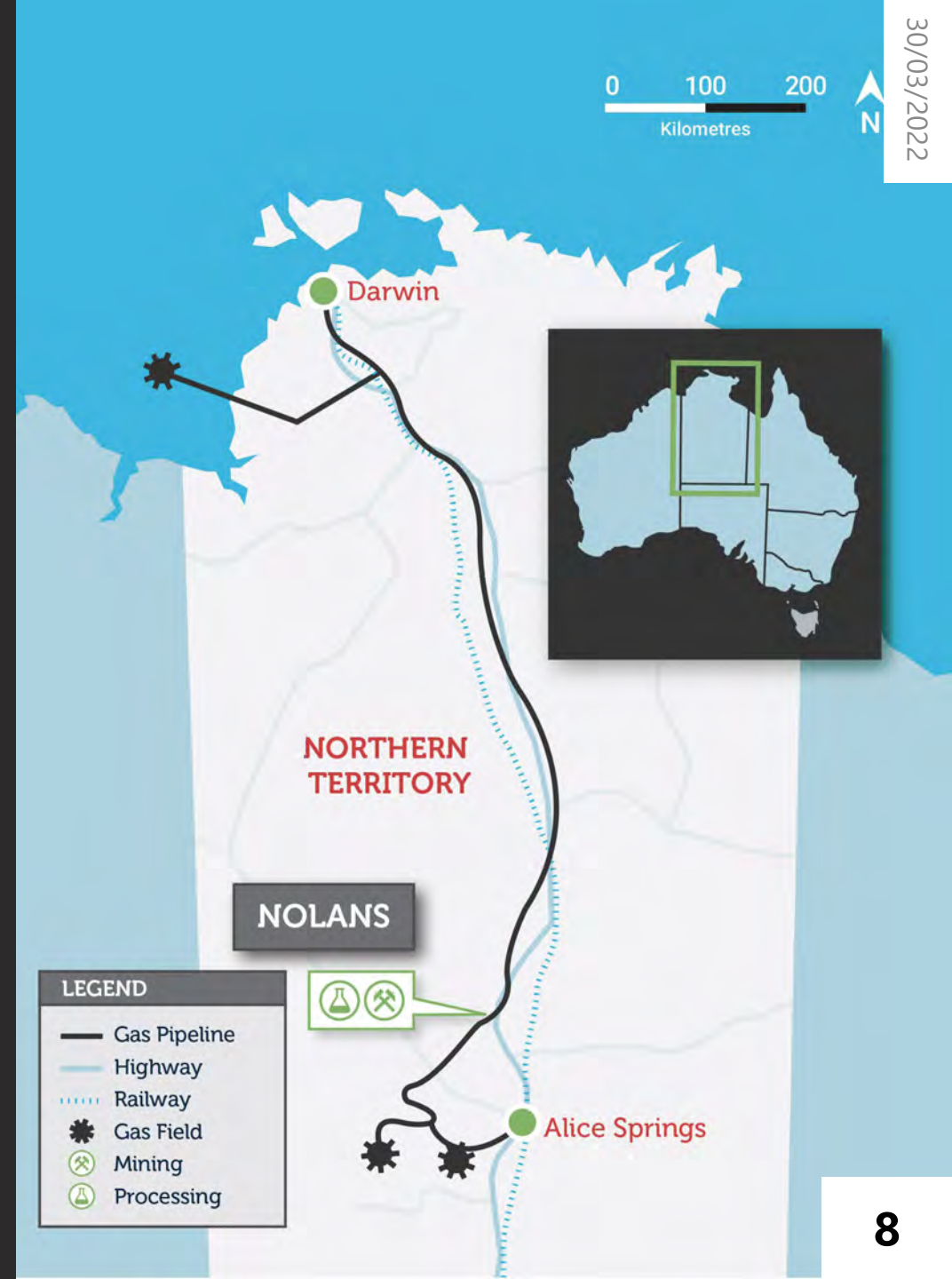
620 regional jobs to build: 280 to operate



minimum mine life **38-year**



can supply **~5%** of global rare earth magnet market



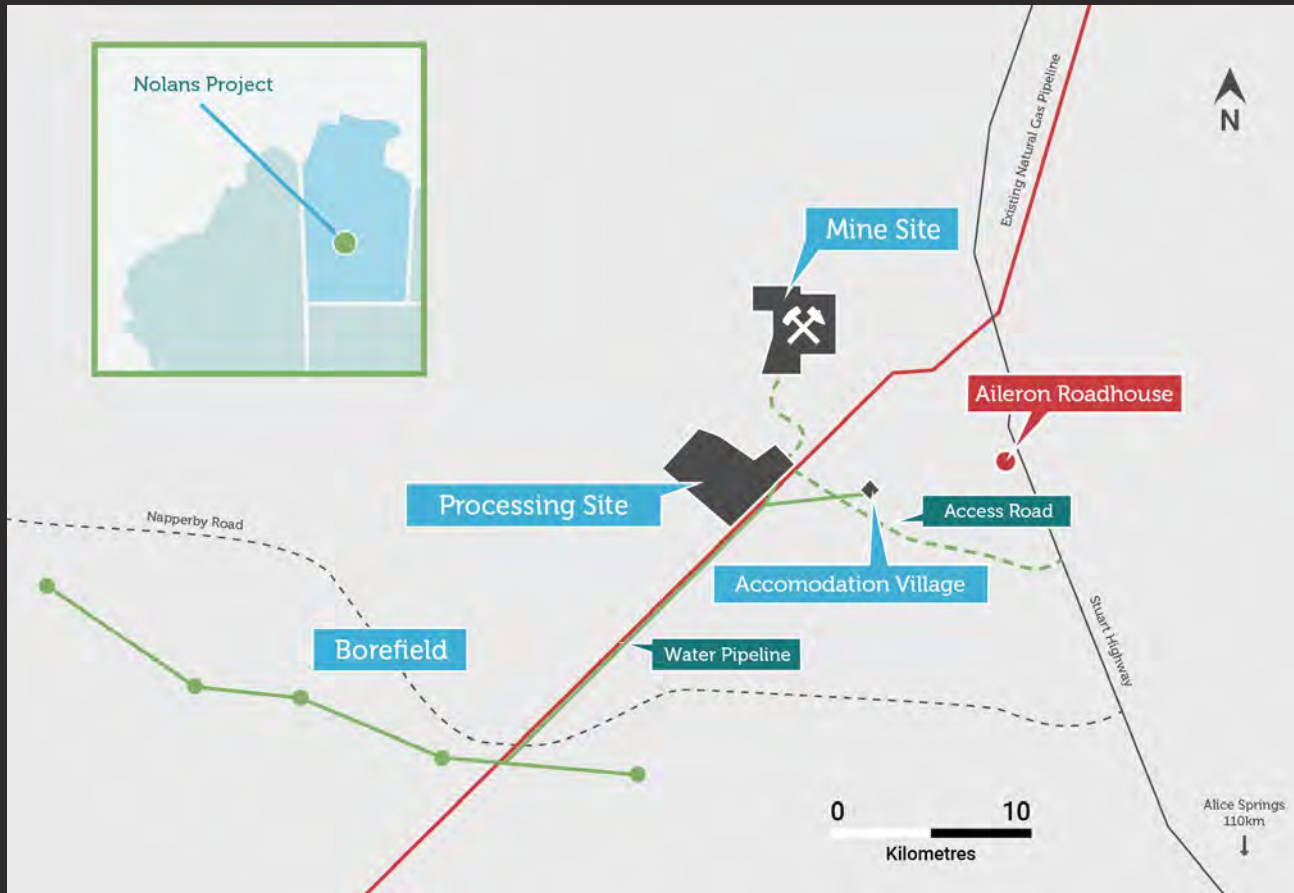
Project Location



Located in the Northern Territory, 135km from Alice Springs



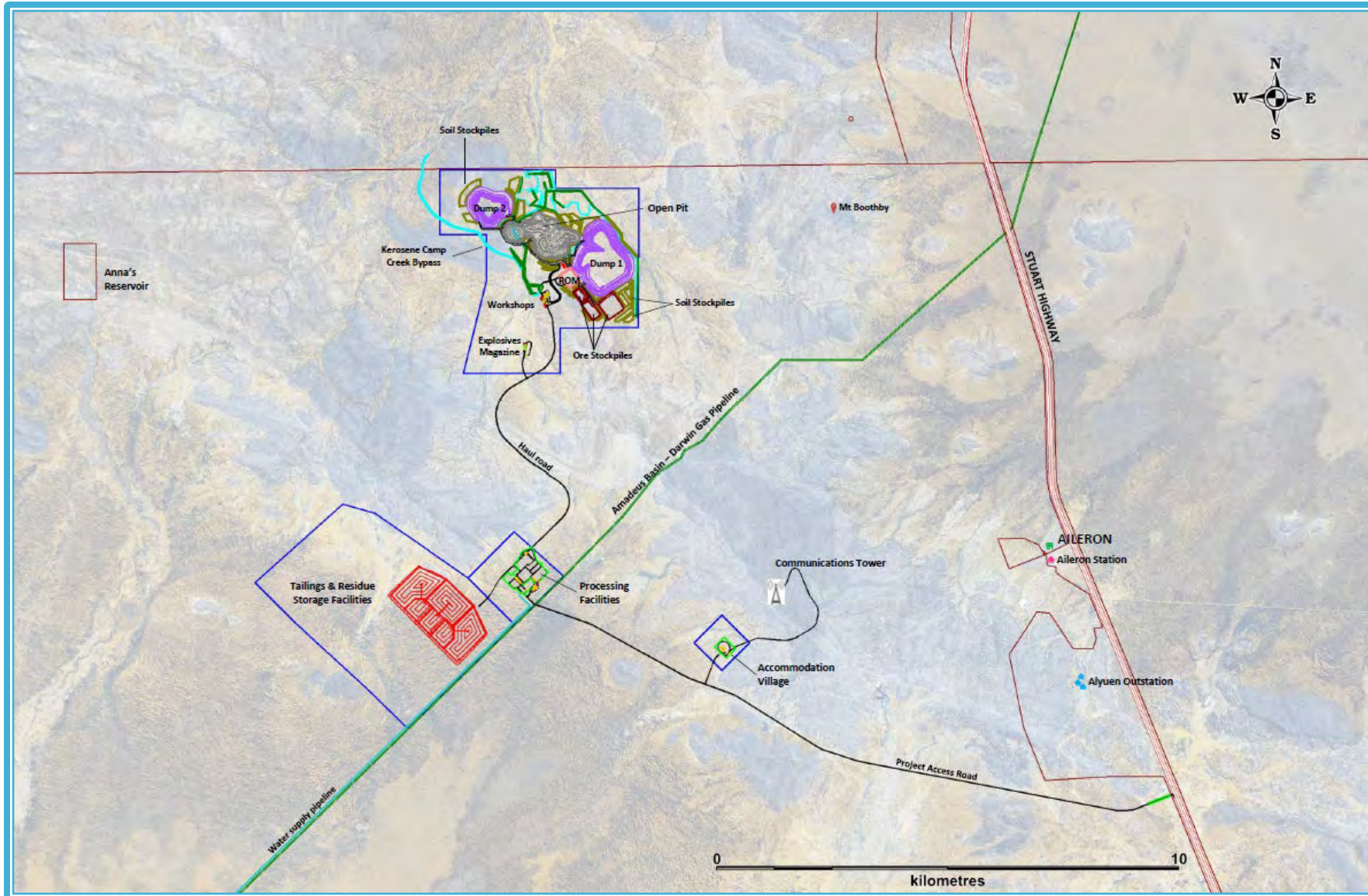
Single Site offers product traceability and waste management certainty



Nolans site in close proximity to existing key infrastructure

- ✓ Stuart Hwy 10km East
- ✓ Alice Springs railyard, airport and other services 135km south
- ✓ Amadeus natural gas pipeline- adjacent to project site
- ✓ Water supply 30km south
- ✓ All operations in one location

Project Layout



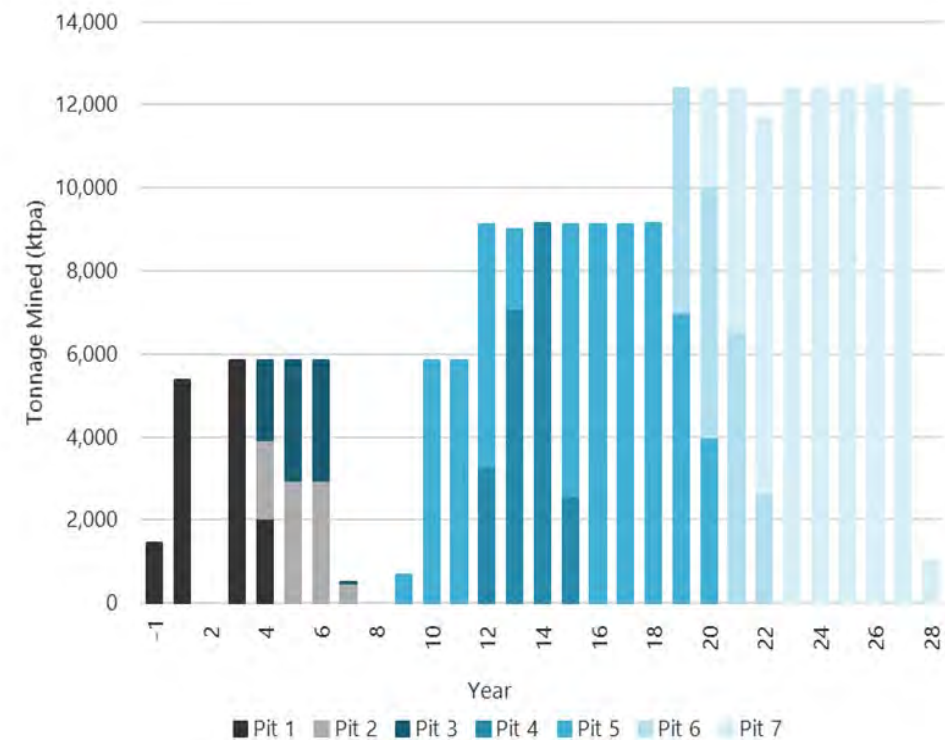
Mining – Pit Design & Mining Method

- ✓ Multi pit stage mining, conventional open-cut initially
- ✓ One final large pit
- ✓ Design to cater for 140t dump trucks (e.g. Cat785's)
- ✓ Excavators proposed 120t – 200t class
- ✓ Blasting 5m benches
- ✓ Campaign mining for first 7 years



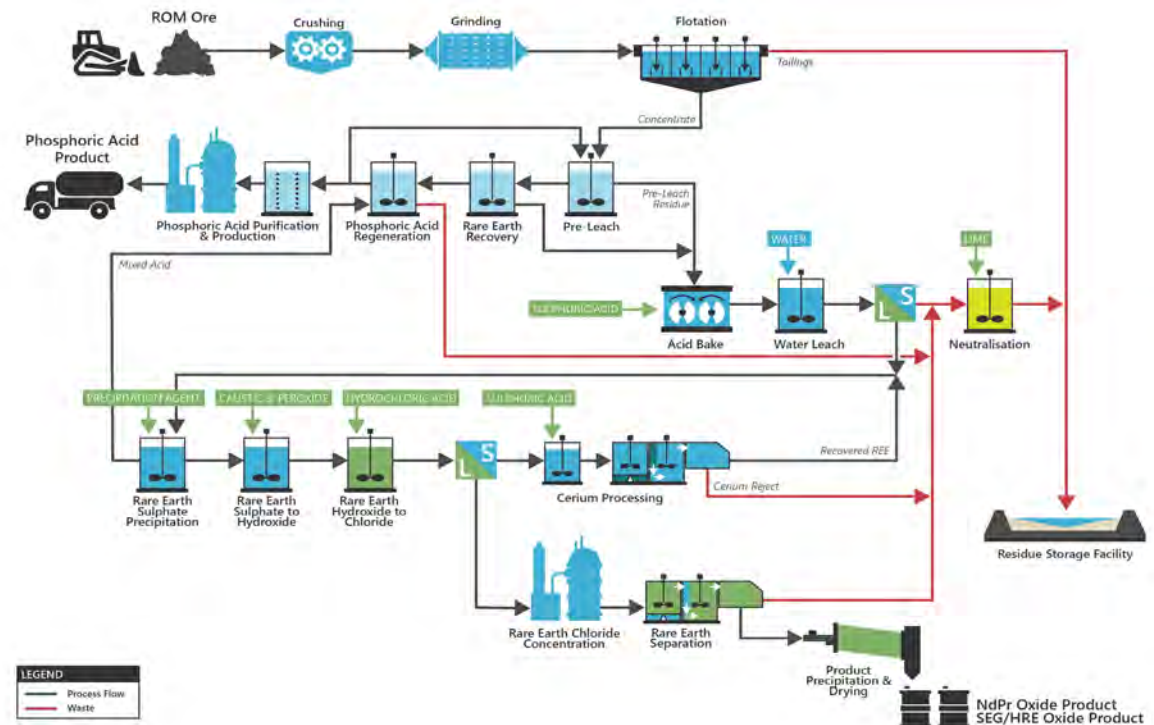
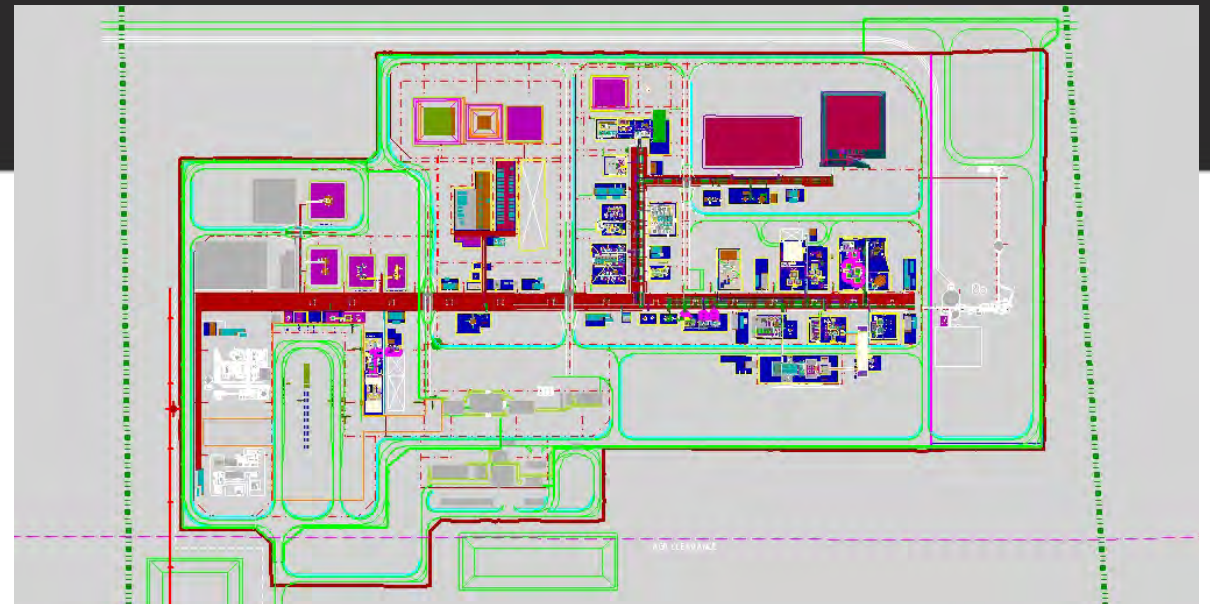
Mining – Mine Schedules

- ✓ Maximise NdPr production
- ✓ All Ore blended on ROM, road train haulage to crusher
- ✓ Prioritise Measured and Indicated high grade pits first
- ✓ Campaign mining strategy 28 years of mining for up to 38 years of processing
- ✓ Step changes in mine production due to reducing ore grades and increasing strip ratio

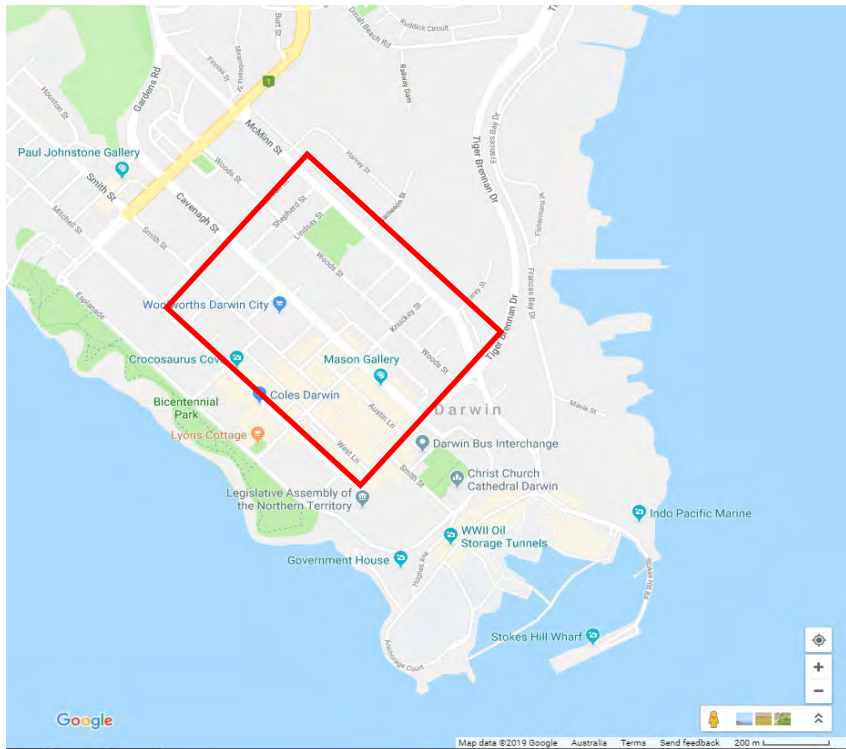


Processing

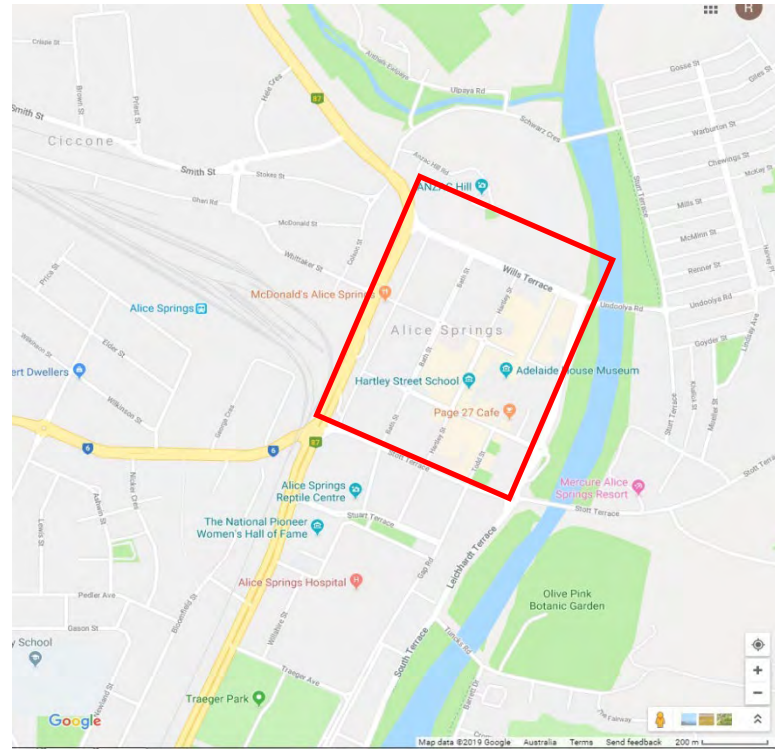
- ✓ Complex chemical plant like an alumina refinery (Gove), nickel refinery (Townsville) or integrated plant (Olympic Dam) not like a gold plant (Tanami) or concentrator (Core Lithium)
- ✓ Small flotation plant followed by large hydrometallurgical plant and supported by sulphuric acid plant
- ✓ Also office, workshops, stores, laboratory, control room, change house, laundry etc.



Process Plant Area (≈ 50 hectares)



Darwin CBD



Alice Springs
CBD

Infrastructure – General

- ✓ Sealed site access road – 15km
- ✓ Village – 650 construction, 200 operations
- ✓ Site communications
 - ✓ Microwave link or optical fibre at Aileron
 - ✓ Link to mine, plant, village, borefields
- ✓ Power station
 - ✓ Gas fired with turbines
 - ✓ Produces steam (incl. from acid plant)
 - ✓ BOO contract including GHG reduction in PPA
 - ✓ Power line to village
 - ✓ Black start backup (diesel)

Infrastructure – Mine Area

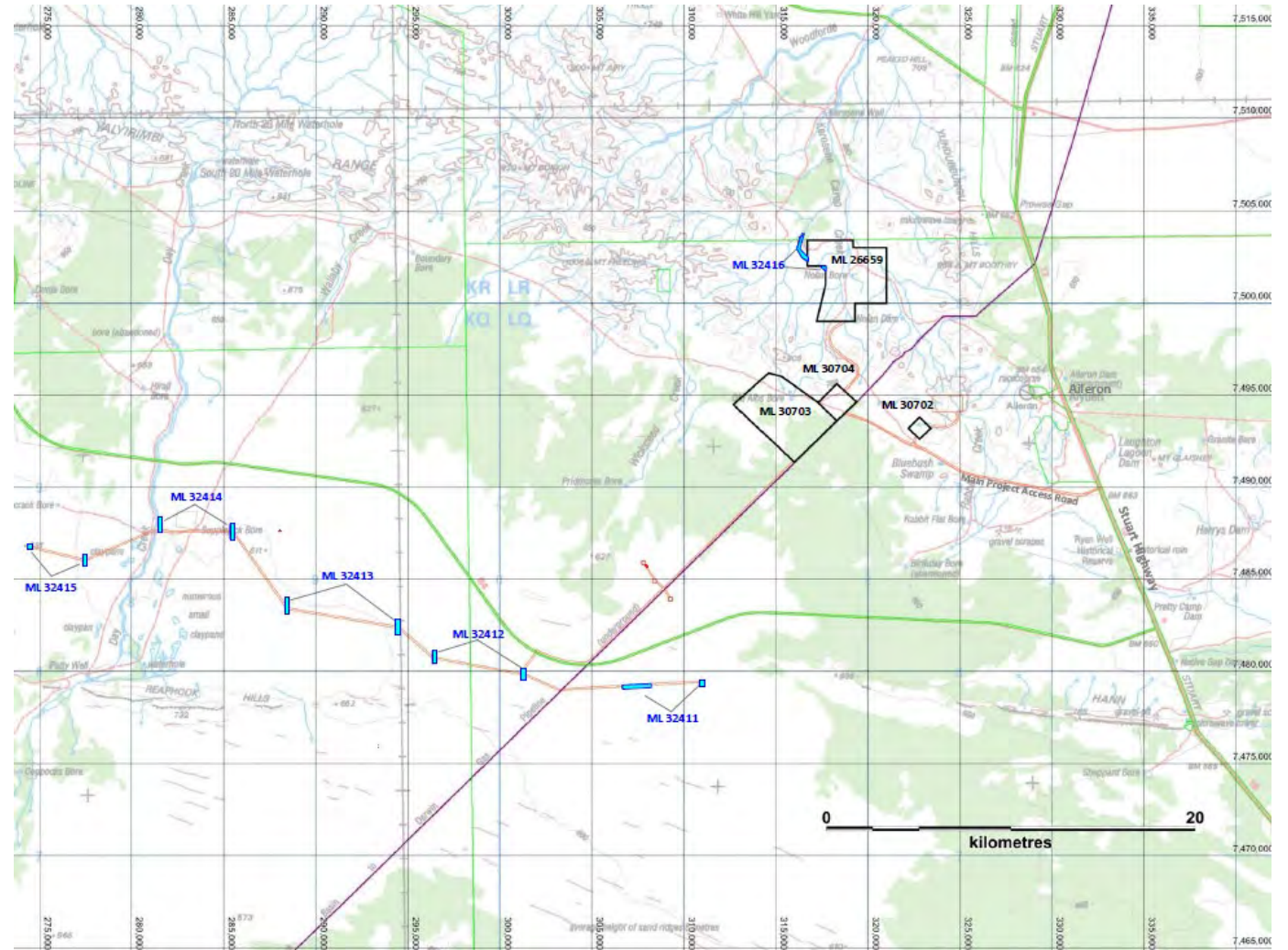
- ✓ Unsealed mine access road – 8.5km
- ✓ Mine buildings by contractor
 - ✓ Mine office
 - ✓ Crib & ablutions
 - ✓ HV/LV workshop
 - ✓ Tire change equipment
- ✓ Explosives magazine
- ✓ Permanent infrastructure
 - ✓ Fuel farm and refueling
 - ✓ Water supply
 - ✓ Wastewater storage
 - ✓ Power supply (local generating set)
 - ✓ Washdown system for HV & LV
 - ✓ Core shed

Infrastructure – Plant Area

- ✓ Admin and other offices
- ✓ Emergency response/security/first aid
- ✓ Fixed plant workshop
- ✓ Warehouse
- ✓ Reagents store
- ✓ Change house & laundry
- ✓ Crib rooms & ablutions
- ✓ Central control room
- ✓ Laboratory
- ✓ Wastewater treatment plant
- ✓ Fuel storage and LV refuelling

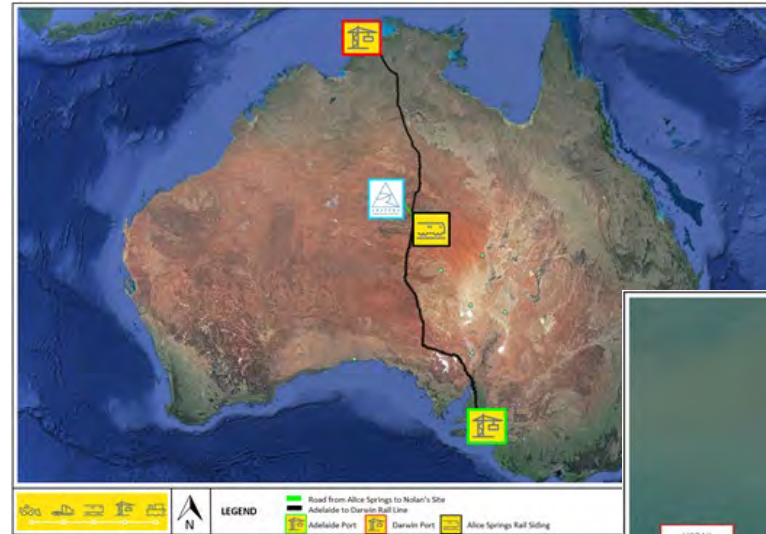
Borefields & Water Supply

- ✓ \$3.5m spend on drilling, testing, modeling and monitoring to define water resource
- ✓ Monitoring continues to better understand aquifer
- ✓ Five borefields of 3 bores
- ✓ Pumping to site in 500mm buried pipe
- ✓ Large array of monitoring bores to manage the water resource



Logistics

- ✓ Rail from either Darwin or Adelaide to Alice Springs
- ✓ Road from Alice Springs to site
- ✓ Approx. 250,000tpa incoming, 150,000tpa outgoing, majority is liquid chemicals in isotainers
- ✓ Some infrastructure required in Darwin for sulphur and phosphoric acid
- ✓ Contract logistics with potential for subcontract



(ASX:ARU)

Project Economics

Mining and Production		
Mine Life (years)	38	
NdPr Oxide (tpa)	4,440	
SEG/HRE Oxide (tpa)	474	
Phosphoric Acid (tpa 54% P ₂ O ₅ MGA)	144,393	
Financial	US\$	A\$
Capital Cost (\$m)	768	1,056
NdPr Oxide (US\$/kg)	US\$87/kg	120
Rare Earth Sales Revenue (\$m/pa)	388	534
Phosphoric Acid Sales Revenue (\$m/pa)	58	79
Mining Costs (\$m/pa)	(30)	(42)
Processing Costs (\$m/pa)	(105)	(145)
General and Administration Costs (\$m/pa)	(15)	(21)
EBITDA (\$m/pa)	257	354
KPI Analysis	US\$	A\$
Operating Cost \$/kg NdPr	33.91	46.60
Operating Cost \$/kg NdPr net of P ₂ O ₅ credit	24.76	34.06
NPV ₈ after tax (\$m)	1,011	1,402
IRR after tax (%)	18.1%	

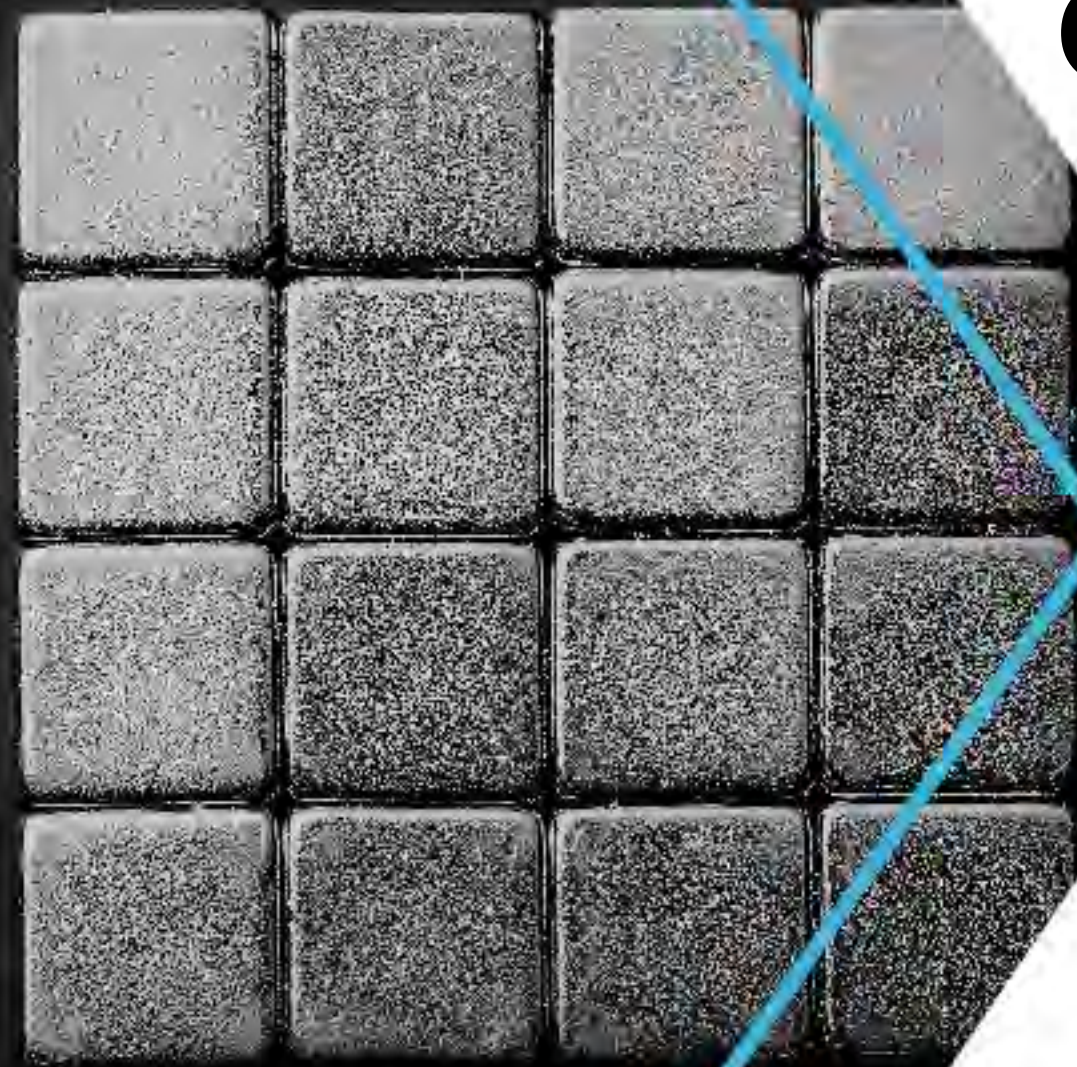
Robust economics based on long term NdPr price of **US\$87/kg**

Current price US\$166/kg*

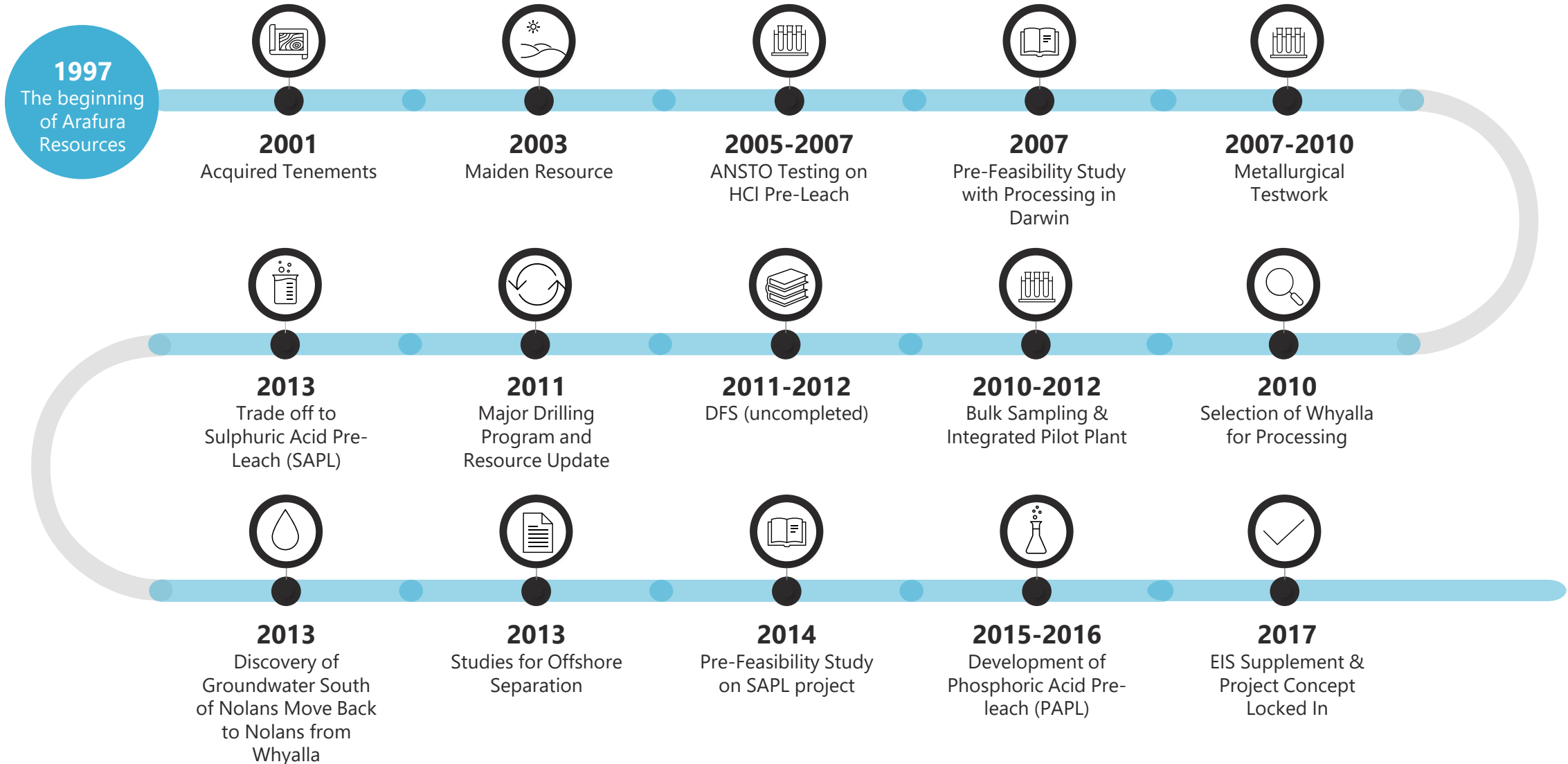
- ✓ **Post-tax NPV₈ of A\$1.4 billion and IRR of 18.1%**
- ✓ **Capital cost A\$1,056m**
- ✓ **Annual average EBITDA of A\$354m**
- ✓ **Low-cost producer at US\$24.76/kg NdPr**
- ✓ **Single site advantage**

Refer to ASX Announcement Nolans Project Update dated 11 May 2021 which assumes a long-term NdPr oxide price of US\$87/kg. Average production and costs are calculated as the arithmetic annual average following the anticipated two year ramp up and excluding the final years of production from low grade stockpiles.

Current Project Status



Project History



Nolans NdPr Project Shovel Ready



Regulatory

- ✓ Federal & NT Environmental Approvals secured
- ✓ Government and Minister support for senior debt facility



Security of Tenure & Social License to Operate

- ✓ Native Title Agreement
- ✓ Mineral License Granted
- ✓ Federal and Northern Territory Major Project Status
- ✓ Indigenous Engagement Strategy and Territory Benefits Plan



Technical

- ✓ DFS and Project Update complete
- ✓ Extensive piloting of ore to oxides flowsheet
- ✓ Appointment of KBR & Wave to in-house team
- ✓ Front End Engineering & Design (FEED) commenced



Commercial

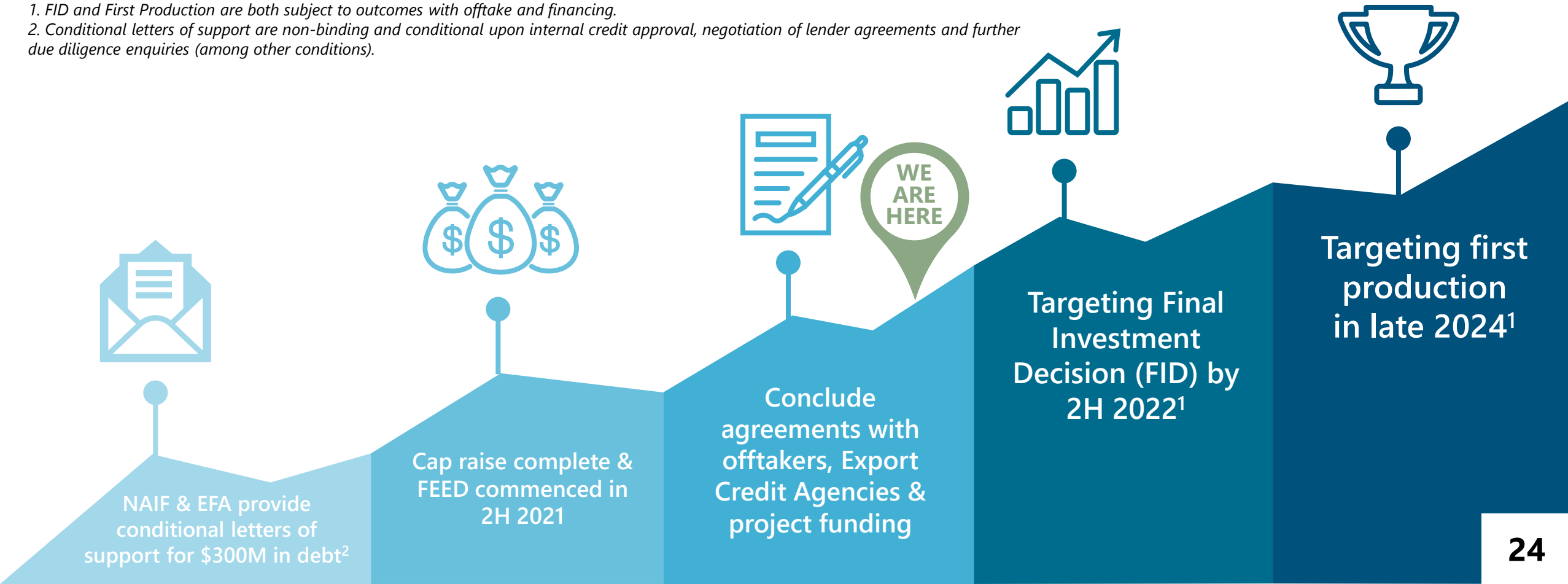
- ✓ Customer verification of oxide products
- ✓ Australian Government provide conditional letters of support for \$300M in debt
- ✓ \$45.5M Successful capital raising completed to fund FEED
- Offtake engagement (advanced discussions underway)
- Project funding (commenced senior debt process & strategic equity)

Nolans Key Development Milestones

**Milestone targets are indicative and subject to change and are contingent upon funding, offtake activities and general market conditions*

1. FID and First Production are both subject to outcomes with offtake and financing.

2. Conditional letters of support are non-binding and conditional upon internal credit approval, negotiation of lender agreements and further due diligence enquiries (among other conditions).



Current Work Program

- ✓ Geology and Mining – Preparation for tendering mining contract
- ✓ Process plant – FEED & constructability reviews by Constructors in preparation for tendering
- ✓ Non-process Infrastructure – FEED, re-costing, detailed design for early works in preparation for tendering & construction
- ✓ Environmental and permitting – final planning, permits and getting ready for construction
- ✓ Execution readiness – getting Arafura ready across the board

Environment, Sustainability & Community



Our Approach

- ✓ We have met consistently with our key stakeholders over many years since 2006.
- ✓ Brian Fowler has worked for many years on this project
- ✓ Karen Sheldon Roundtable in 2019
 - ✓ Begin the Local and Indigenous Engagement employment Strategy
 - ✓ 24 organisations consulted with
- ✓ Consultation with NTG, local government, NGOs, community and industry bodies.
- ✓ Comprehensive social impact assessment and closed the loop to stakeholders.
- ✓ Used the insights to inform project planning and our benefits plan.
- ✓ Addressed difficult issues and stakeholder concerns.



Gavin Lockyer, Managing Director, holding an on-country meeting in 2020.

To date, Arafura has:



NTA for Exploration and Operations

\$3.5m water exploration & ongoing monitoring to ensure sustainability.



Water drilling at Nolans Site

Discovery of new aquifer allowed permanent water to be available to Alyuen community



Employing local contractors for ongoing water monitoring

In excess of \$50m of on ground exploration. Exploration agreement with traditional owners provides funds for community development projects



Laundry at Alyuen

Indigenous engagement such as Karen Sheldon workshops



Karen Sheldon Workshop



Sponsored the Young Indigenous Art & Literacy Program
(Laramba & Ti Tree Remote Schools)



We intend to continue to work closely with the community and Territorians to ensure our initiatives are fit for purpose.



(ASX:ARU)

Local Content & Opportunities

Karen Sheldon Workshop



- ✓ Nolans will deliver significant economic, business and employment opportunities to Central Australia as well as the remainder of the NT.
- ✓ Identify opportunities for locals, (business, employment, services etc.), don't over promise and under deliver.
- ✓ Don't create unrealistic expectations, be honest.
- ✓ Be proactive in engaging with locals (Chamber of Commerce, ICN NT, economic development committees, local councils, business groups.
- ✓ Prepare local businesses early. Explain project prerequisites (workshops, information sheets)

Nolans Benefits for Territorians



Territory Benefit Plan approved

1. Outlines Arafura's commitment and engagement strategies to maximise the long term benefits of Nolans for the local community and wider NT economy.
2. Includes a considered local Indigenous Engagement Strategy to support Arafura's employment goals.



**30-month
construction
period**

- Peak workforce of 650*
- \$1 billion initial capital spend



**Minimum
38-year
operational
life**

- 280* permanent jobs across the Territory
- \$225 million annual spend



**Local
Content**

- Targeting locals as a priority
- 20% Indigenous Employment Target

* 25% initially expected to be sourced from the NT

Opportunities for Aboriginal Territorians

- ✓ Arafura will continue to consult with NT and Local governments, Indigenous organisations and the CLC to determine the capacity of the local labour market and businesses to meet the Nolans Project's workforce and procurement needs.
- ✓ Indigenous Engagement Strategy developed to **maximise opportunities and benefits for Anmatyerr traditional owners and other Aboriginal people in the project's operational area**
- ✓ Native Title Agreement **embodies commitments and will deliver many opportunities and benefits to local communities**
- ✓ **Aspirational local Aboriginal employment target of 20%**



*Senior native title holders sign the Native Title Agreement.
Tony Scrutton (L) and James Glenn (R) both standing.*

ESG - Current activities and initiatives

"Arafura's ESG commitment is to be a trusted global leader and supplier of choice for sustainably mined and processed rare earth products, helping our customers deliver clean and efficient technologies. We are committed to delivering positive intergenerational economic, environmental and social benefits to our stakeholders."



Prioritise GHG Emissions and Water Management

- Water reduction strategy
- GHG Emissions Audit and reduction study
- Renewable energy – Solar power initiative, Commitment to Net Zero GHG



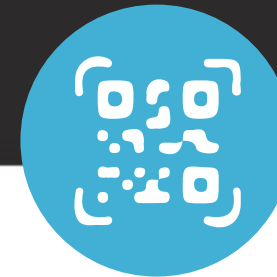
Finalise Update of Sustainability Report

- Signatory of the UN Global Compact
- Comprehensive report that satisfies requirements of global ESG ratings agencies and reporting standards
- Due 2H 2021



Pending Member in IRMA

- Arafura will complete the IRMA Ready assessment standard as soon as it is launched



Traceability – Blockchain Technology

- Aligned with customers' ESG expectations
- Will allow tracing of Nolans sustainably produced products through entire supply chain to customers



Innovation and Technology

- Downstream value add opportunities
- Ongoing R&D, low carbon metallisation process
- Options for hydrogen or other energy storage solutions

Project Execution



Execution Sequence

- ✓ **Enabling Works** – access to site and construction water
- ✓ **Early Works** – infrastructure & services to support main scopes
- ✓ **Main Construction Works** – staged mobilization of all Contracts
- ✓ **Commissioning** – progressive activity up to wet stages
- ✓ **Pre-production Mining** – clearing, pre-strip and mining to ROM
- ✓ **Production** – mining and processing

Contracting Strategy

- ✓ Mine
- ✓ Process Plant
 - ✓ Beneficiation Plant – EPC
 - ✓ Hydrometallurgical Plant – EPC
 - ✓ Acid Plant – Construct only
- ✓ Power Station – BOO(T)
- ✓ Non-Process Infrastructure (NPI)

No.	NPI Package Title
1	Accommodation Village & Construction Camp
2	Information and Communications Technology (ICT)
3	Wastewater System (WWTP Only)
4	Mine Fire Water Pump Package
5	Diesel / Fuel Storage and Distribution
6	Light/Heavy Vehicle Washdown Bays
7	Borefield Drilling and development
8	Borefield Headworks
9	Borefield Pipelines
10	Nolans Bore Development
11	Steel Frame Buildings
12	Modular Buildings
13	Civils/SMP and E&I (CSMPEI)
14	Bulk Earthworks, Roads & Construction Materials
15	Minor Earthworks
16	RSF – Construction
17	Site Fencing
18	Temporary Facilities – Miscellaneous
19	Concrete Batch Plant - Establish and Operate
20	Waste Management - Rubbish & Sewerage
21	Generator Power - Rental

Contract Types – Major

✓ Packages over AUD 10,000,000

✓ Requirements

- ✓ Proven execution track record
- ✓ Highly specialized skills and equipment
- ✓ Available resources
- ✓ Finances and Insurances

✓ Opportunities

- ✓ Empowering local indigenous engagement
- ✓ Sustain local business

Process Packages

- Hydrometallurgical Plant
- Beneficiation Plant
- Sulphuric Acid Plant

NPI Packages:

- Accommodation Village
- Borefield Drilling
- Borefield Headworks
- Borefield Pipelines
- Civil, SMP and E&I
- Bulk Earthworks and Roadworks
- Residue Storage Facility

Contract Types – Mid Tier

- ✓ Packages up to AUD 8,000,000
 - ✓ Requirements
 - ✓ Robust systems, policies and procedures in place
 - ✓ Proven experience
 - ✓ Available plant, equipment and labour
 - ✓ Finances and Insurances in line with Project T&Cs
 - ✓ ICN Registration
 - ✓ Opportunities
 - ✓ Support by Arafura systems, polices and procedures (if required)
 - ✓ Joint ventures with local companies
- NPI Packages:**
- Information and Comms Technology
 - Firewater Pump Packages
 - Vehicle Washdown Packages
 - Steel Frame Buildings
 - Modular Buildings
 - Temporary Facilities - Miscellaneous

Contract Types - Minor

- ✓ Packages up to AUD 1,000,000
 - ✓ Requirements
 - ✓ Prior similar experience
 - ✓ Available plant, equipment and labour
 - ✓ Finances and Insurances
 - ✓ ICN registration
 - ✓ Opportunities
 - ✓ Support by Arafura or main contractor systems, polices and procedures (if required)
 - ✓ Exposure to larger tier contractors to support their work and local content requirements
- NPI Packages:**
- Nolans Bore – Drilling / Development
 - Fencing
 - Wastewater Treatment Plant (supply)
 - Waste Management
 - Power Generator
 - Diesel refuelling packages

Other Supply Chain Opportunities

- ✓ From small things, big things grow
- ✓ Major supply activities – outside the NT and Australian capabilities
- ✓ OEM – Local support will be required
- ✓ Local supply opportunities:
 - ✓ PPE
 - ✓ Temporary construction facilities and equipment
 - ✓ Electrical, Communications and Instrument Bulks
 - ✓ Building materials and consumables
 - ✓ Mechanical and electrical equipment

How to Get Involved

- ✓ Register with ICN Gateway
- ✓ Expressions of interest put up on ICN to shortlist for contract packages with tendering direct
- ✓ Main contractors, who will be announced on ICN, will follow the same process for sub-contract packages
- ✓ Suppliers can register on ICN as well
- ✓ Also work with CLC and IBN to target indigenous businesses

Project Operations



Operations

- ✓ Operations will run from the start of ore commissioning for 38 years or more
- ✓ Will include a mix of:
 - ✓ Site and Alice Springs office activities
 - ✓ Direct operation by Arafura
 - ✓ Build-own-operate or Contract operations
 - ✓ Supporting Contracts
 - ✓ Suppliers
 - ✓ Consultants

Alice Springs Office



- ✓ Commercial Management
 - ✓ Accounting
 - ✓ Human Resources
 - ✓ Payroll
 - ✓ Travel and Site Access Management
- ✓ Procurement and Supply
 - ✓ Buyers
 - ✓ Contract Managers
 - ✓ Logistics Management
- ✓ Community and Environment
 - ✓ Community Liaison
 - ✓ Environmental Scientists

Contract Operations

- ✓ Contract Mining, including mining equipment supply and maintenance
- ✓ Contract Ore Haulage from Mine to Process Plant
- ✓ Power station and power generation (Build-Own-Operate)
- ✓ Laboratory (Build-Own-Operate)
- ✓ Village operations, catering and maintenance
- ✓ Logistics, with potential sub-contract opportunities

Supporting Contracts

- ✓ Labour hire
- ✓ Mobile equipment hire (cranes, EWP, scaffolding etc.)
- ✓ Contract maintenance services – annual and bi-annual shutdowns, mill relining, minor shutdowns, landscaping, general buildings
- ✓ Workshop and rebuild services
- ✓ Sustaining capital works – RSF expansion, creek diversion, re-sheeting of buildings, concrete and structural repairs, air-conditioning specialists, building repairs, road re-sheeting
- ✓ Supporting equipment vendors with off-site maintenance and rebuilds

ESS Village Contractor – Case Study

- ✓ MOU with ESS to operate our village during construction and operations also includes commitments to the following:
 - ✓ Working with indigenous and local partner businesses
 - ✓ Business incubation
 - ✓ Local supply and support
 - ✓ Staff training and development
 - ✓ Get boots on the ground early and was in Alice Springs with us last week

Operations Employment, Education and Training

- ✓ Committed to develop local and indigenous direct and indirect employment opportunities to become the local *'employer of choice'*
- ✓ Intergenerational career and employment opportunities through, training, apprenticeships, scholarships, sponsorship etc.
- ✓ Job ready people employment opportunities initially in construction and then in operations for skilled & experienced people
- ✓ Will develop pre-employment programs to provide pathways to assist work-ready and disengaged people into full time or part time work opportunities with Arafura and our contractors prior to operations.
- ✓ Contractors will be committed to our goals contractually and via KPIs.
- ✓ Rosters (BIBO) for locals residents designed to encourage Alice Springs residency.

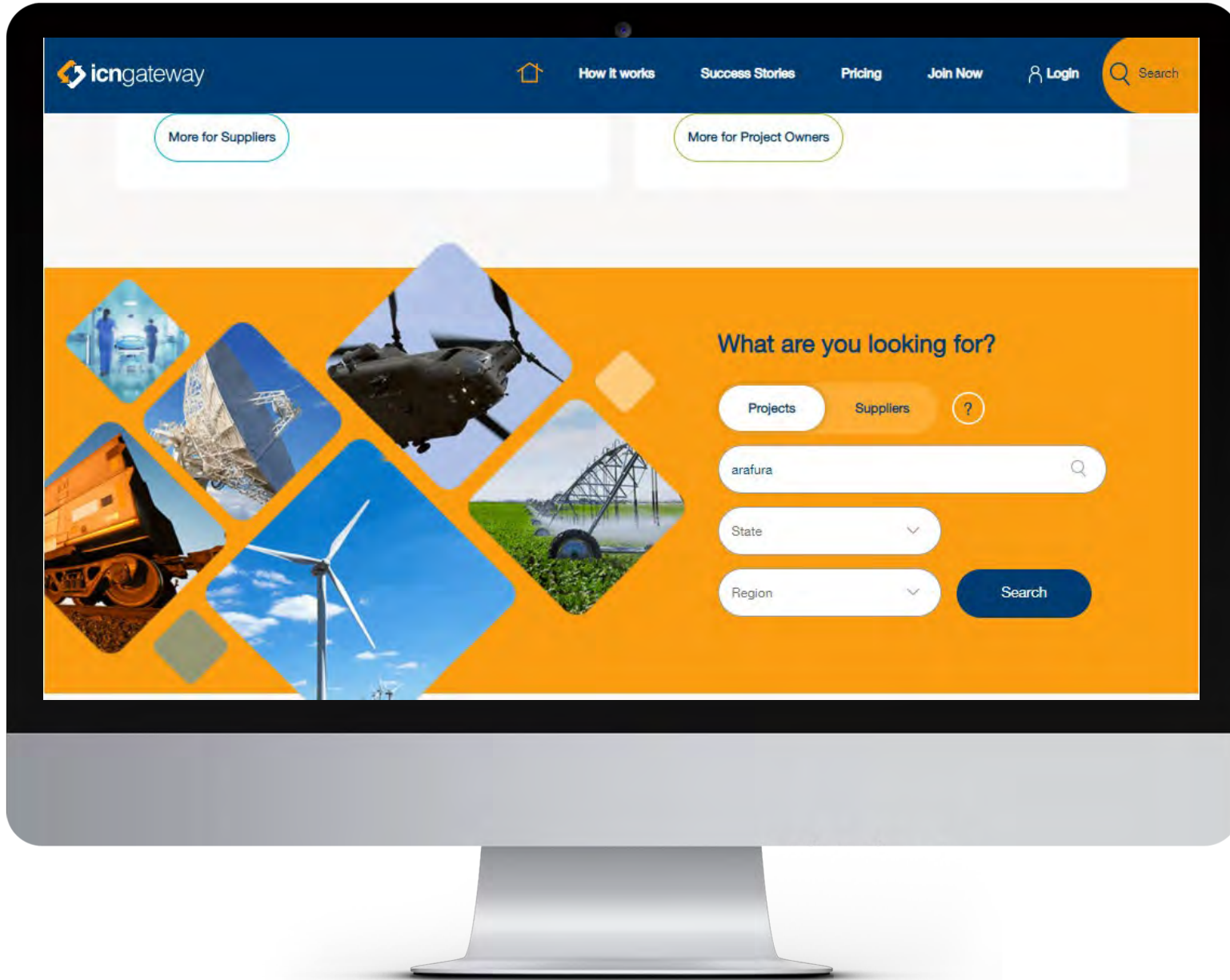
Timeline for Operations Preparedness

- ✓ Catalyst for commencing operations planning will be employment of a General Manager Nolans, anticipated after FID
- ✓ Will be responsible for:
 - ✓ Operational readiness planning
 - ✓ Workforce planning, skills and gap analysis
 - ✓ Training, education and development planning
- ✓ Following planning phase, probably of six months, implementation of plans will be commenced



Industry Capability Network (ICN)

Northern Territory



[Back to search results](#)

Nolans Project

Project Overview

Work Packages

Arafura Resources Ltd is proposing to develop the Nolans Rare Earths project (the Project), which will encompass a mine, beneficiation plant, extraction plant, separation plant, sulphuric acid plant and related non-process infrastructure, to be constructed in the Northern Territory. The project site is located on Aileron Station, approximately 135 kilometres NW of Alice Springs.

The Project mining operation will use conventional open-pit truck and excavator mining methods, supplemented by drill and blasting for ore and waste. A JORC-compliant Ore Reserve supports an initial mine life of 38 years, with mining and processing of all known mineral resources extending the project's operational life to beyond 45 years. Ore Reserves are based on an average mining rate of 7.6 million tonnes per annum to produce 1 to 1.3 million tonnes of ROM ore each year and 316,000 tpa of concentrate through the hydrometallurgical plant to produce a range of rare earth products and a phosphoric acid by-product.

The Project is well developed, and in August 2021 it entered its next phase with the award of an EP (Engineering and Procurement) contract to Hatch. This award will see front end engineering design (FEED) works for the hydrometallurgical plant completed over the next nine months. The result of this work will be a fixed price Engineering, Procurement and Construction (EPC) construction contract for the hydrometallurgical plant which will be tendered. The final tenderer price will assist the Company in making a Final Investment Decision in the second half of 2022.

In parallel to these FEED works Arafura will continue to:

- Scope the Beneficiation Plant and Sulphuric Acid Plant which will be tendered as fixed price Engineering, Procurement and Construction (EPC) contracts concurrently with the hydrometallurgical plant EPC tender.

- Develop the process control system for the project process plant (beneficiation plant, hydrometallurgy and sulphuric acid plant).

- Ensure all early works construction is ready for tendering concurrently with the hydrometallurgical plant EPC tender. Early works packages include but are not limited to communications, borefield development, bulk earthworks (including access roads), village installation, and fuel storage and distribution infrastructure.

- Develop service contracts to enable establishment of Build Own Operate (BOO) power station, concrete batch plant, waste management and wastewater systems, village operator/operations etc.



Project at a glance

- NT Australia
- Financing and Mining Approvals
- Arafura Resources Limited
- AU\$1,006M

Contact Details

Industry Capability Network (NT)

- +61 8 8922 9422
- [Send email enquiry](#)

Nolans Project

Project Overview

Work Packages

Work Package	Documents	Full Scope EOI	Partial Scope EOI	Status
Miscellaneous				
+ Nolans Project - General Updates		→ Create EOI Closes: 31 Dec 2022		● Open
Work Packages				
+ Beneficiation Engineering, Procurement and Construction (EPC) Package	Scope Doc	→ Create EOI Closes: 25 Mar 2022	→ Create EOI Closes: 25 Mar 2022	● Open
+ Hydrometallurgical Plant EP (FEED)		Closed: 13 Sep 2021		● Awarded
+ Integrated Project Management Team		Closed: 28 Jan 2020		● Awarded
+ Process Control System (PCS)	Scope Doc	Closed: 31 Oct 2021	Closed: 31 Oct 2021	● Closed



nolansproject.icn.org.au

The Nolan's Project ICN Gateway page is the platform for pre-tender Expressions of Interest (EOI) collection

- ◆ Register for **'General Updates'** to be notified of all new work packages or contract awards
- ◆ **Express interest** to be considered for tender opportunities
- ◆ Review work package **awards**



nolansproject.icn.org.au

Nolans Project

Project Overview | **Work Packages**

Work Package	Documents	Full Scope EOI	Partial Scope EOI	Status
Miscellaneous				
+ Nolans Project - General Updates		→ Create EOI Closes: 31 Dec 2022		Open
Work Packages				
+ Beneficiation Engineering, Procurement and Construction (EPC) Package		↓ Scope Doc		
+ Hydrometallurgical Plant EP (FEED)				

EXPRESSION OF INTEREST (EOI)

Package Title	Beneficiation Engineering, Procurement and Construction (EPC) Package
Package Reference	ICN-MT-EOI-P-1002
Package Description	<p>The Beneficiation EPC package includes:</p> <ul style="list-style-type: none">Ore receipt facility,Crushing plant,Grinding and Milling facility,Flotation and Dewatering facility,Beneficiation Reagent plants. <p>The scope of work shall include engineering, design, detailing, procurement, fabrication, construction, commissioning, testing, reporting and training of all equipment within the package. The scope of work shall include both permanent and temporary works on site.</p> <p>The following works are excluded from the scope of works:</p> <ul style="list-style-type: none">Mining,Hydrometallurgical Plant,Power generation and site power distribution,Sulphuric acid plant,Steam generation,Bulk reagents receipt,Raw, desalinated, and potable water,Site-wide communications,Non-process infrastructure (NPI),Bulk earthworks. <p>The Contractor shall be responsible for the project management of the complete package.</p> <p>Interested parties will provide resources that illustrate their capabilities specific to the contract on offer, and demonstrate their industry performance and compliance with/to Health, Safety, Environmental and Quality Management systems.</p>
Key information to be included in the EOI	

Arifura Resources Limited | ABN: 22 080 933 455

Perth Address: Level 6, 432 Murray St, Perth WA 6000
PO Box 5773, St Georges Terrace, Perth WA 6001

Darwin Address: Unit 34, 119 Richards Rd, Winnellie NT 0820
PO Box 37220, Winnellie NT 0821

T: +61 8 6270 2800 | W: www.arifura.com | E: arifura@arifura.com

nolansproject.icn.org.au

Submit EOI's against relevant work packages providing supporting documents to conform to the requirements for Arafura's assessment.

Project examples should be tailored to the **project** and to the **scope of work**

Contact ICN with any work package questions for assistance

FULL SCOPE - SUBMIT YOUR EXPRESSION OF INTEREST

Beneficiation Engineering, Procurement and Construction (EPC) Package

Nolans Project
Company: ICN (NT)
EOI last updated by: at 17:15 on Fri, 18 Mar 2022

SUBMISSIONS CLOSE IN 1 WEEK 0 DAYS 8 HOURS 14 MINS

EXPRESSION OF INTEREST

Please complete all mandatory fields to submit your Expression of Interest below.

Mandatory fields

Please select a location for this registration 101, 12 Salomika Street PARAP NT 08

Some answers may have already been pre-filled using answers from other Expressions of Interest. Please review all answers carefully as your qualification for this work package may rely on the answers.

Please download the template, complete and upload a list of similar EPC contracts using the Download button below.

You may upload one file.
File types allowed: pdf, doc, docx, xls, xlsx, zip
Maximum File size: 16.0 MB

Choose files here

No file selected

Does your company have any programs in place regarding Indigenous participation in your workforce? Yes No

Please upload details of your Safety Management system.

You may upload one file.
File types allowed: pdf, doc, docx, xls, xlsx, zip
Maximum File size: 16.0 MB

Choose files here

No file selected

Please upload details of your Quality Management system.

You may upload one file.
File types allowed: pdf, doc, docx, xls, xlsx, zip
Maximum File size: 16.0 MB

Choose files here

No file selected

Please upload details of your Environmental, Social and Corporate Governance (ESG) policy.

You may upload one file.
File types allowed: pdf, doc, docx, xls, xlsx, zip
Maximum File size: 16.0 MB

Choose files here

No file selected

Please upload details of your current contractual commitments, timeframes and remaining capacity.

You may upload one file.
File types allowed: pdf, doc, docx, xls, xlsx, zip
Maximum File size: 16.0 MB

Choose files here

No file selected

Please upload a copy of your local organisation chart, showing key members of your organisation likely to be involved if your services were to be engaged.

You may upload one file.
File types allowed: pdf, doc, docx, xls, xlsx, zip
Maximum File size: 16.0 MB

Choose files here

No file selected

Please upload additional documentation here.

You may upload one file.
File types allowed: pdf, doc, docx, xls, xlsx, zip
Maximum File size: 16.0 MB

Choose files here

No file selected

Once all mandatory fields are complete you can Submit or Save to finish later

Save for later Submit



How ICN Works



Key Points

- ◆ Create a **free** ICN profile, or update your existing profile to demonstrate your full capabilities
- ◆ Register for '**General Updates**' to be notified of all new work packages or contract awards
- ◆ Submit an individual **EOI** for each relevant work package
- ◆ **Contact ICN** for any assistance with the process



ICN Northern Territory

Phone: 08 8922 9422

Email: resources@icnnt.org.au

nolansproject.icn.org.au

Closing Remarks and Questions



Closing Remarks

- ✓ Plan for a on-line presentation in near future for those that couldn't make it
- ✓ Register for updates through arultd.com or ICN gateway
- ✓ Everyone at Arafura is very excited to move Nolans in the next stage
- ✓ Short video presentation we have been showing to offtake partners followed by questions
- ✓ Look forward to talking with everyone who has booked one-on-one

Contact Information



Level 6, 432 Murray St
Perth WA 6000, Australia



+61 8 6370 2800



arafura@arultd.com
nolansproject@arultd.com



www.arultd.com