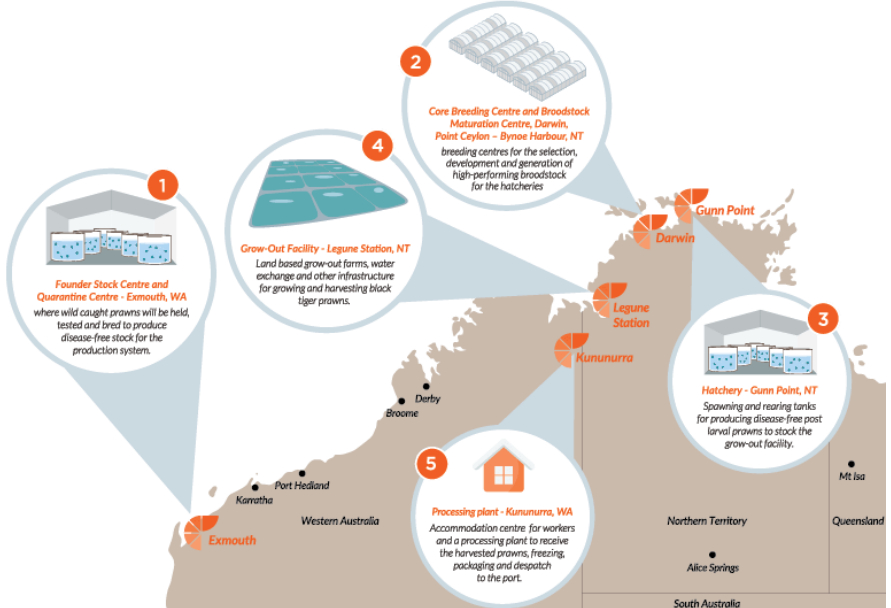
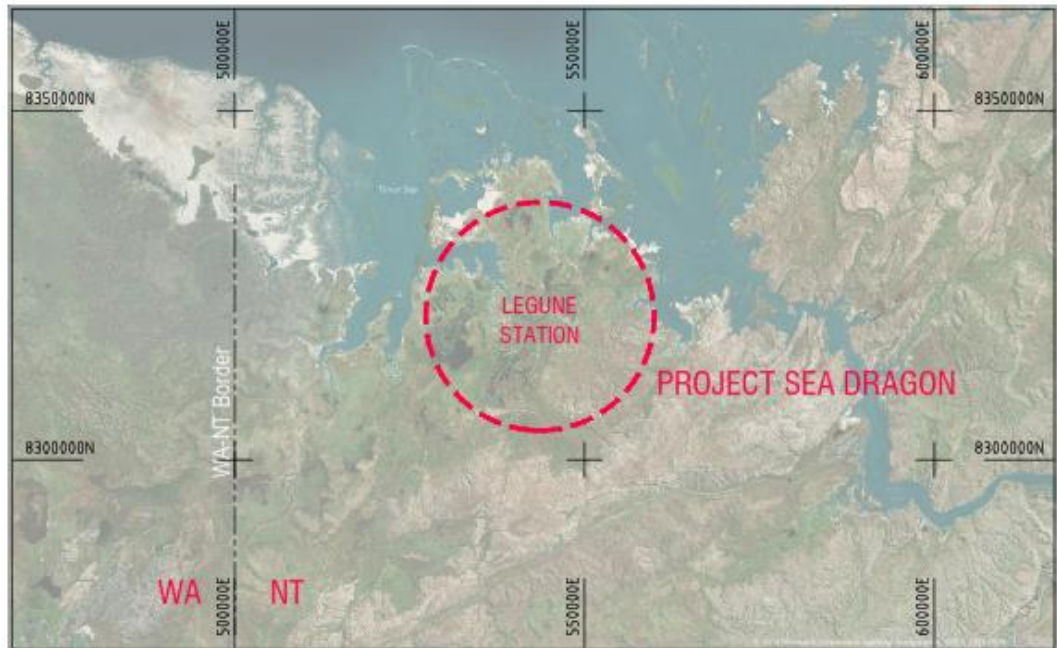


PROJECT SEA DRAGON – EXPRESSION OF INTEREST (EOI)

Package Title	Farm 1 – Aeration Units to Grow Out Ponds
Reference Number	P009
Project Overview	<p>The proposed Project Sea Dragon (PSD) is a large-scale, integrated, land-based aquaculture project in northern Australia that will deliver premium-quality, year-round reliable volumes of prawns for domestic and export markets. PSD will be a staged development of up to 10,000 hectares of production ponds as well as a series of facilities across northern Australia including:</p> <ul style="list-style-type: none"> ➤ Founder Stock Centre and Quarantine Centre at Exmouth, WA; ➤ Bynoe Breeding Facility, that includes a Core Breeding Centre and a Broodstock Maturation Centre, at Bynoe Harbour, near Darwin, NT; ➤ Hatchery to be built at Gunn Point, near Darwin, NT; ➤ Grow-out Facility to be built at Legune Station, NT, approximately 110 km from the town of Kununurra, WA; and ➤ Processing facility to be built approximately 15 km north of Kununurra, WA.  <p>Seafarms has all the necessary regulatory approvals in place to build Stage 1 of the development that consists of approximately 1,120 Ha of ponds and the associated upstream and downstream facilities. Seafarms proposes to develop Stage 1 in several steps with Stage 1a (S1a) being one farm at Legune of approximately 400 Ha, and the upstream and downstream facilities at Legune and other sites. Subject to further funding, the balance of Stage 1 is targeted to be complete within 3 years of commissioning S1a and that subsequent stages 2 and beyond to the full scale of approximately 10,000 hectares would continue to be delivered in line with overall schedule of work.</p> <p>Stage 1a of Project Sea Dragon has a total construction budget of approximately \$281M excluding cost contingency and escalation. Organisations interested in responding to this request for expression of interest are encouraged to review Seafarms (ASX – SFG) Annual Report Presentation released on the ASX site 1st September 2021 and later announcements.</p> <p>The shortlisted respondents will be required to sign a Non-Disclosure Agreement (NDA) prior to receiving the Tender Documents.</p>

Package Description

The location of these works is Legune Station, NT which is located approximately 110 km north-east of Kununurra, Western Australia, and approximately 40km inside the NT border.



LOCALITY PLAN

This package is for the design, fabrication, supply, and installation support of aerator units to adequately aerate and circulate 36 off 10 ha square ponds during prawn production.

The successful tenderer will supply the aeration units, and all labour, equipment, testing, certification, consumables, and transport to deliver the items to site in accordance with all necessary Australian laws, codes and standards. The aerator controls and electrical cabling that run from the unit to the adjacent pond bank will be supplied and installed by others.

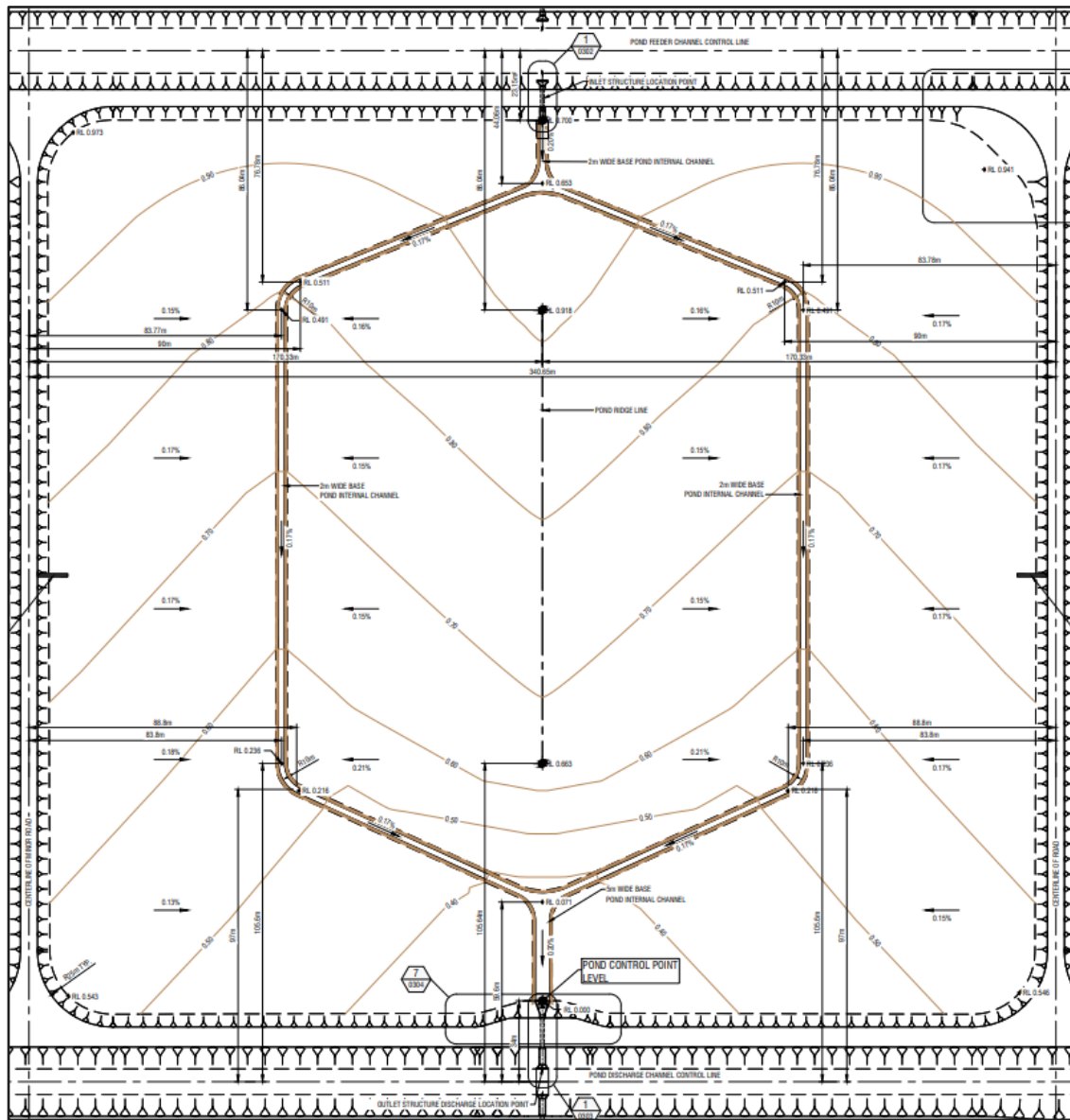
Even though this is a supply package, the successful tenderer will be required to provide remote and in-person support to ensure that all the aerators are installed and commissioned in accordance with their requirements. In addition, the tenderer should provide technical support during the possible site modification and assembly of the aerators into frames. PSD will provide on-site accommodation, messing, and office space where required.

The specific design parameters for the aerators will depend upon the final PSD project design and this may be subject to change. However, the respondents must use the following requirements in providing a suitable response:

- All aerators will be required to operate from continuous or duty cycle, 3-Phase, 415V, 50Hz electrical supply;
- A minimum efficiency level of 1.5kg O₂/kW/hr;
- The aerators will both aerate and circulate the water to provide homogenous mixing;
- The depth of the pond water during operations will range from 1.0 m to 2.2 m;
- The Grow Out Ponds each have side lengths 335 m by 305 m.
- Water temperature will range from 22 degrees to 36 degrees Celsius;
- Salinity will range from 10ppt to 42ppt;
- The maximum feeding rate per hectare will be 180kg/ha/day.
- The Supplier to nominate the quantity and type of units for each pond to meet the above conditions, including a recommended spares list.

	<p>Road access to the site and therefore delivery may be restricted, and or closed due to conditions associated with the northern Australian wet season.</p> <p>In accordance with PSD’s commitments to building local and Indigenous capacity in the region, the EOI evaluation will include a weighting for utilising local and regional businesses in the Northern Territory and the Kimberly region of Western Australia.</p> <p>Respondents to the EOI will be assessed and short listed, with short listed respondents to be invited to tender.</p> <p>PSD reserve the right to combine this package and or parts of this package with any other project package.</p>
<p>Key Information to be provided with the Respondent’s EOI</p>	<p>Safety</p> <p>The shortlisted respondents will be required to include a Covid-19 Management Plan within their tender submission that will form part of the Contractor’s WHS Management Plan.</p> <p>Accreditations</p> <p>The respondent shall have, or be able to attain prior to contract award, all required accreditations, as well as registrations needed to successfully deliver this work package.</p> <p>The respondent shall provide a copy of their Quality Management system and records of previous project performance to support their capability to delivery this work package.</p> <p>Reference Projects</p> <p>Provide project data sheets for 3 reference projects. The reference projects should be of similar size, complexity, and location.</p> <p>The data sheets shall include:</p> <ul style="list-style-type: none"> ■ Project Name; ■ General Project Description; ■ Client Name and Reference Contact; ■ Approximate Project Value; ■ Actual Start Date; ■ Actual Finish Date and any variations to the schedule and reasons for variations; and ■ WHS Notifiable Incident(s)? If yes, then explain in detail as to the incident, investigation and recommendations. <p>The respondent should highlight the following:</p> <ul style="list-style-type: none"> ■ Experience working on remote construction projects; and ■ Experience in delivering similar projects during Northern Australia’s wet season, including access issues to/from and within the project site. <p>The above should be evidenced by providing references from past clients with their current contact details.</p> <p>Each project data sheet shall be no more than two A4 pages (including photos).</p>
<p>Reference Documents</p>	<p>The following documents are attached herein for EOI purposes:</p> <ul style="list-style-type: none"> ■ Grow Out Pond – Typical Floor Setout Plan

Key Milestones	Target date for issuing Invitations to Tender (ITT) is 3 November 2021 Target Contract Award Date is 15 December 2021 Target Aerator Delivery Completion Date is 25 July 2022 Target Date for Practical Completion is 30 March 2023
Expression of Interest (EOI)	Interested parties with the requisite experience are invited to express an interest in this work package by registering and lodging their expression of interest, complete with all key information stipulated in this document, for this work package on the NT ICN Gateway online platform prior to the closing date stated below. projectseadragon.icn.org.au Please ensure your ICN company profile is up to date before registering your expression of interest.
EOI Closing Date	5:00 pm (1700h) on 20 October 2021 Darwin time (ACST)
Contact	ICN NT Resources Team +61 8 8922 9422 resources@icnnt.org.au
Project website	www.seafarms.com.au
Disclaimer	This package description and target award date is indicative only and subject to change. It is intended to provide only a brief outline of certain works that may be required for the proposed Project Sea Dragon and should be read in conjunction with Project Sea Dragon project description on ICN Gateway.



Grow Out Pond – Typical Floor Setout Plan