

# Welcome to ICN and ICN Gateway Profile Essentials



1



2

# Welcome to ICN and ICN Gateway Profile Essentials

**AGENDA**

- Welcome
- Housekeeping
- Inland Rail overview
- Tottenham to Albury project
- Procurement process
- Commitment to local and Indigenous industry participation
- Registering your interest
- Questions

**INLAND RAIL** **ARTC**

ICN Victoria | 13 April 2021 3

3

Creating a new reality for Australia and a more prosperous nation

+

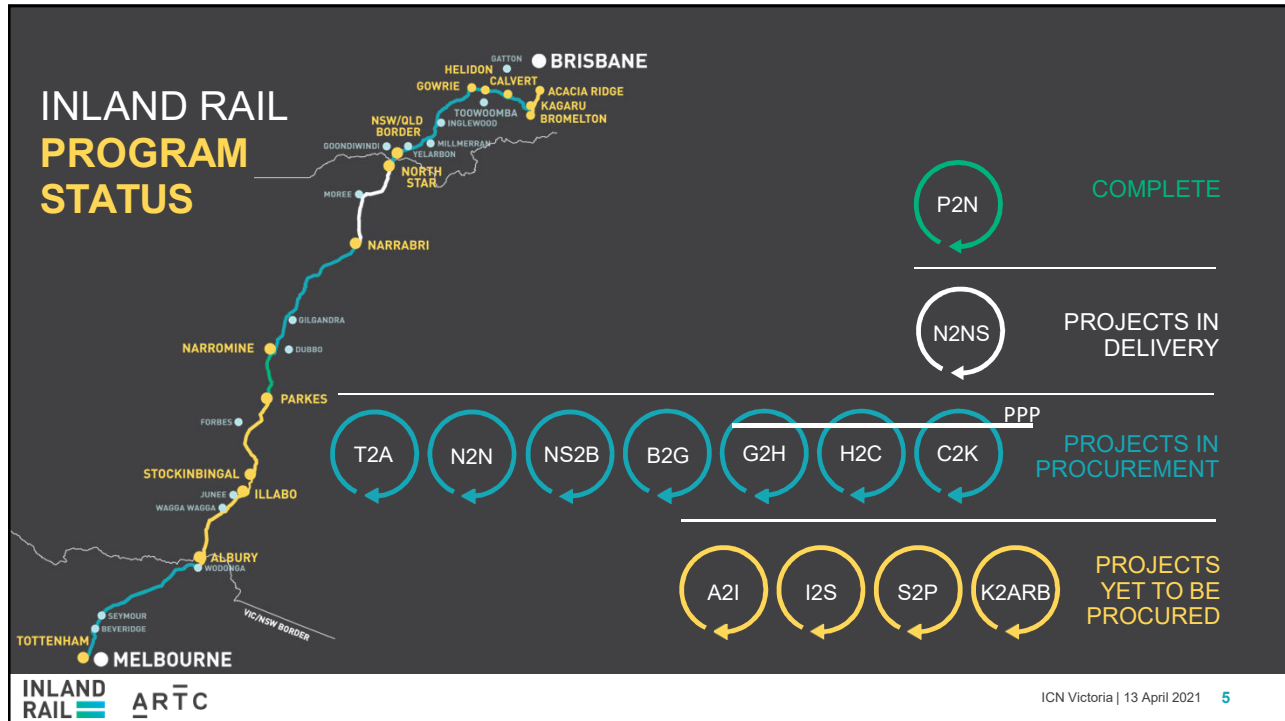
Connecting Australia into a faster, safer, more reliable freight rail network

**INLAND RAIL** **ARTC**

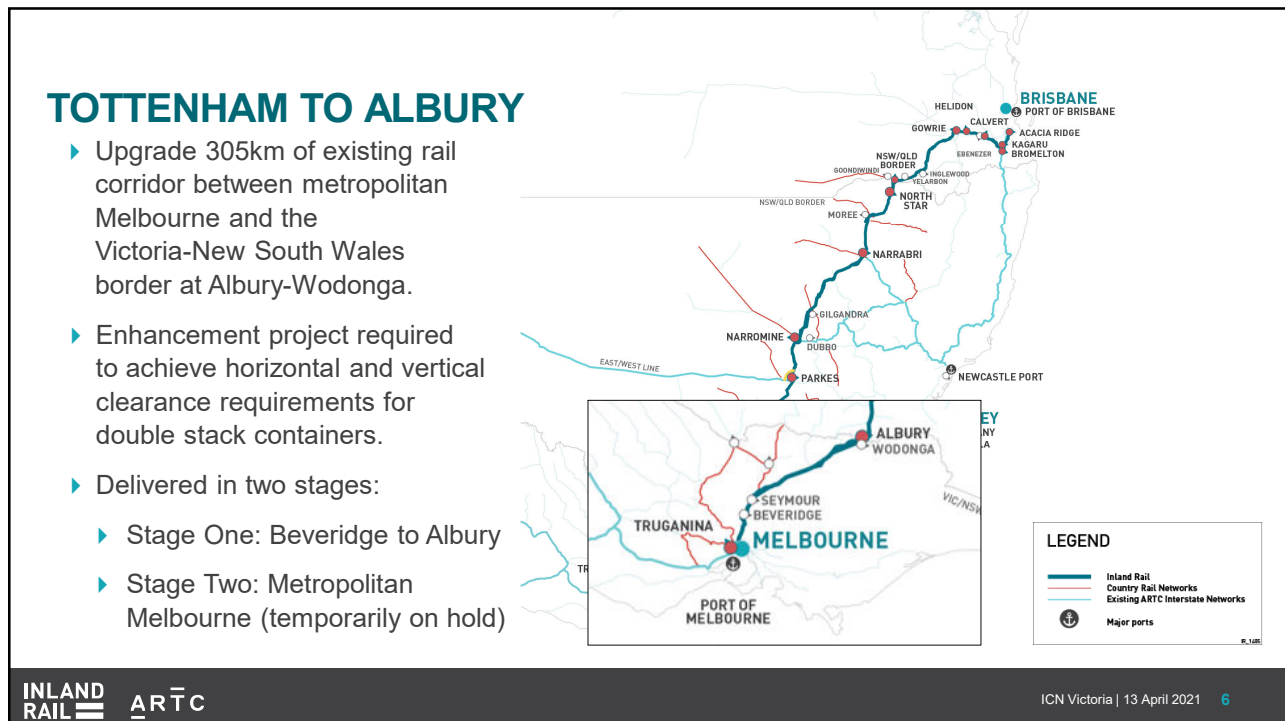
ICN Victoria | 13 April 2021 4

4

# Welcome to ICN and ICN Gateway Profile Essentials



5




6

# Welcome to ICN and ICN Gateway Profile Essentials

## TOTTENHAM TO ALBURY

Connecting metropolitan Melbourne to the Victoria / New South Wales border



RAIL CORRIDOR	STAGE ONE	CAPACITY	TRACKWORK	BRIDGES	UNDERPASSES	INFRASTRUCTURE
Upgrading approx. 305km of existing rail corridor in two stages	Works to 12 sites between Beveridge and Albury along the North East Rail Line	Initially constructed for 1.8km long trains	Moving track in some places (horizontally, referred to as track slews)	Replacing existing bridges with taller bridges	Looking at options to build underpasses for pedestrians and vehicles	Relocating or raising railway signal gantries Modifying or relocating overhead power poles
			Lowering rail track under bridges		Removing footbridges	

**INLAND RAIL** **ARTC**

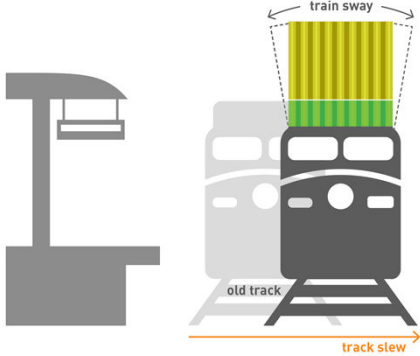
ICN Victoria | 13 April 2021 7

7

## TOTTENHAM TO ALBURY – STAGE 1

To achieve the clearance required, the proposed design solutions include:

- ▶ lowering rail track under road bridges
- ▶ removing and replacing existing bridges with taller bridges
- ▶ removing footbridges and constructing pedestrian underpasses
- ▶ installing track slews (process undertaken to move a track horizontally)
- ▶ relocating or raising signal gantries, and
- ▶ modifying or relocating overhead power poles



**INLAND RAIL** **ARTC**

ICN Victoria | 13 April 2021 8

8

# Welcome to ICN and ICN Gateway Profile Essentials

## TOTTENHAM TO ALBURY – STAGE 1

Phase	Timeframe
Expression of Interest (EOI) for dual (2) Early Contractor Involvement (ECI) Phase	9 June 2020 (complete)
EOI close	7 July 2020 (complete)
ECI Contractors (2) selected Tranche 1	August 2020 (complete)
ECI Phase 1 commences	October 2020 (complete)
ECI Phase 1, Initial Design and Construct (D&C) submission received	December 2020 (complete)
<b>Final D&amp;C offers submitted</b>	<b>May 2021</b>
<b>D&amp;C contract awarded</b>	<b>August 2021</b>
<b>Site mobilisation</b>	<b>Q1, 2022</b>
<b>Project construction completion</b>	<b>Q2, 2025</b>

9

### SUPPLY OPPORTUNITIES ON INLAND RAIL

**DIRECT TO ARTC INLAND RAIL**

Provide full, fair and reasonable opportunity for capable and competitive Australian entities to participate in the procurement of goods, services and equipment.

**INDIRECT TO PRIMARY CONTRACTORS**

Use local suppliers, skills and labour, where possible, and ensure environmental, social and economic considerations are embedded in our procurement process.

**UTILISATION OF INLAND RAIL**

Responsibly deliver and operate Inland Rail with the least negative social impact possible, while enhancing the benefits Inland Rail delivers to the people of Australia at both a local and national level.

INLAND RAIL ARTC

ICN Victoria | 13 April 2021 10

10

# Welcome to ICN and ICN Gateway Profile Essentials

## HOW TO GET INVOLVED

- ▶ Prepare a business capability statement and develop an online presence (website, LinkedIn etc.)
- ▶ Seek information about opportunities and qualifications required
- ▶ Create an ICN Gateway company profile and register interest at [inlandrailt2a.icn.org.au](http://inlandrailt2a.icn.org.au)
- ▶ Make your business known to ICN consultants
- ▶ Attend supplier briefings and networking events
- ▶ Explore alliances/partnerships with other businesses
- ▶ Introduce your capabilities to Contractors/Subcontractors

The screenshot shows the ICN Gateway website interface. At the top, there are navigation links: JOIN NOW, PRICING, WHY ICN?, SEARCH, CONTACT, and LOGIN. Below this is the project title: Inland Rail - Tottenham to Albury - Stage 1. Key information includes: Location: VIC Australia; Project Status: > \$250M; Project Owner: AUSTRALIAN RAIL TRACK CORPORATION LTD. The 'Project Details' section contains an 'About Inland Rail' section, a 'Contact Details' section with a phone number (+61 438 411 129), and a 'Tottenham to Albury' section. The bottom of the page lists two stages: Stage One: Melbourne to Albury and Stage Two: Metropolitan Melbourne.



ICN Victoria | 13 April 2021 11

11

## DOING BUSINESS WITH INLAND RAIL

REGISTER



[inlandrailt2a.icn.org.au](http://inlandrailt2a.icn.org.au)

[inlandrail.artc.com.au/suppliers](http://inlandrail.artc.com.au/suppliers)



ICN Victoria | 13 April 2021 12

12

# Welcome to ICN and ICN Gateway Profile Essentials



13