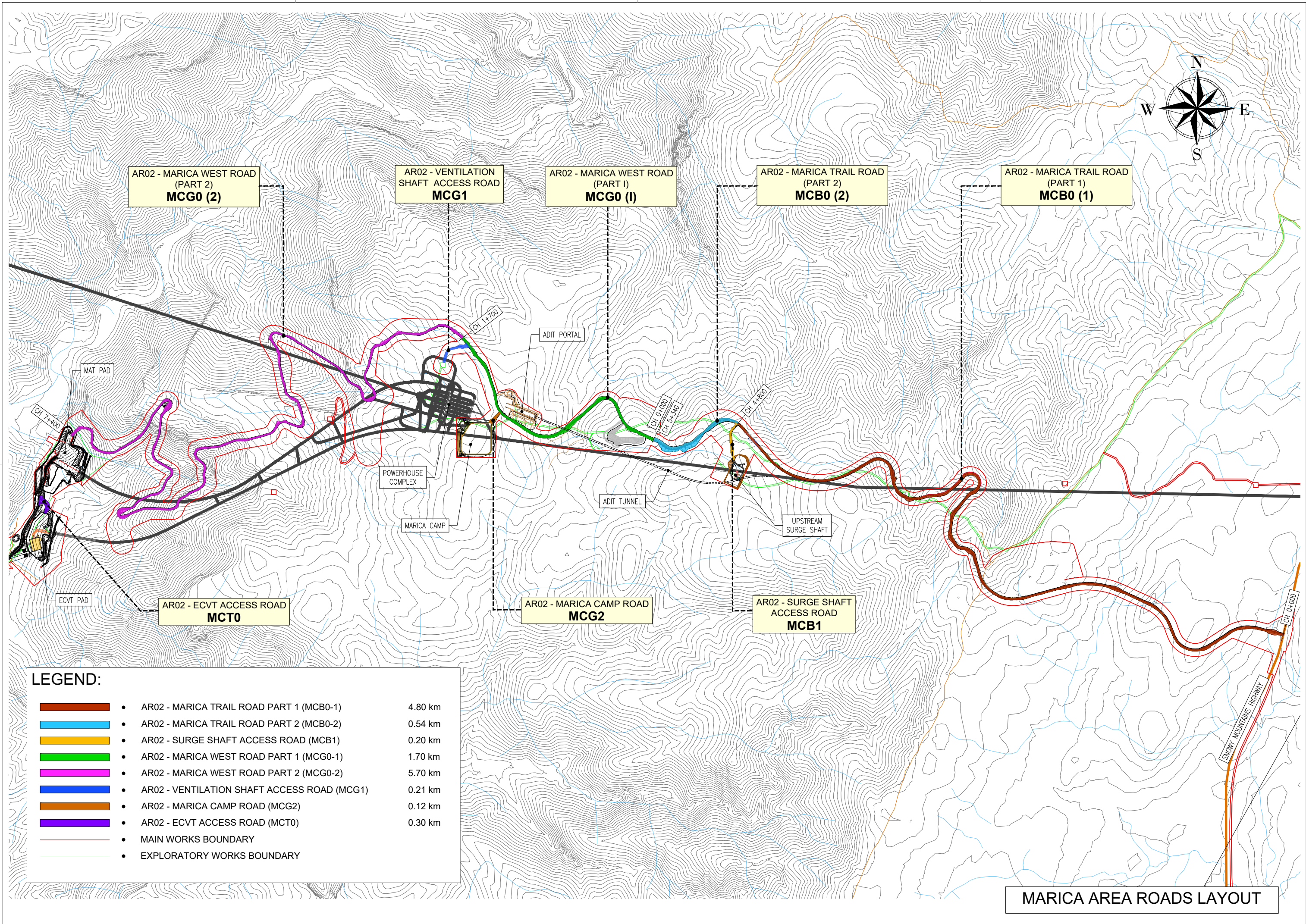


PROJECT EXPRESSION OF INTEREST	
Project Title.	Snowy 2.0 – Future Generation Joint Venture.
Project Description.	<p>Salini Impregilo, Clough and Lane have formed Future Generation Joint Venture (Future Gen) to provide the EPC package for SHL on the Snowy 2.0 Project.</p> <p>The Project is a pumped hydro project that will increase the generation capacity of the Snowy Mountains Scheme by up to 2,000MW and at full capacity will provide approximately 350,000MW/h of energy storage. The project includes all activities associated with the requirements for the Snowy 2.0 Pumped Hydro-electric Scheme.</p>
Opportunity Title.	PPK 360 Main Roads Construction.
Opportunity Description.	<p>The Subcontractor is required to submit a fee proposal for the Main Roads Construction as below.</p> <ul style="list-style-type: none"> • Pipeline Rd -Adit Platforms Stage 2, • Ravine Road Stage II (Ch. 0-7,000), • Ravine Rd Stage II (Ch 7,000-14,000), • Talbingo Spoil Rd, • Talbingo Construction Access - Low Haul Rd, • Talbingo Permanent Access, Talbingo Construction Access - Upper Haul Rd, • Marica Trail Rd (Part I), • Marica Trail Rd (Part II), • Surge Shaft Access Rd, • Marica West RD (Part I), • Marica West Rd (Part II), • Tantangara Rd, Quarry Trail Rd, • Tantangara Barge Ramp, • Tantangara Camp Rd (becomes Spoil Haul Rd), • Tantangara Intake Access Rd (Upper), • Tantangara Intake Access Rd (Lower) 1, • Tantangara Stockpile Access Rd. • Please see attached Drawings. <p>-AR02 - MARICA TRAIL ROAD PART 1 (MCB0-1) 4.80 km · AR02 - MARICA TRAIL ROAD PART 2 (MCB0-2) 0.54 km · AR02 - SURGE SHAFT ACCESS ROAD (MCB1) 0.20 km · AR02 - MARICA WEST ROAD PART 1 (MCG0-1) 1.70 km · AR02 - MARICA WEST ROAD PART 2 (MCG0-2) 5.70 km · AR02 - VENTILATION SHAFT ACCESS ROAD (MCG1) 0.21 km · AR02 - MARICA CAMP ROAD (MCG2) 0.12 km · AR02 - ECVT ACCESS ROAD (MCT0) 0.30 km.</p>

	<ul style="list-style-type: none"> · AR01 - RAVINE ROAD (MCA0) 13.91 km · EW01 - TALBINGO CAMP ROAD (MC70) 0.21 km · EW01 - PIPELINE ROAD 1A (MC80 STAGE 1A) 0.37 km · EW01 - PIPELINE ROAD 1B (MC80 STAGE 1B) 0.23 km · EW01 - PIPELINE ROAD (MC80 STAGE 2) 0.42 km · AR01 - TALBINGO CONST. ACCESS - LOWER HAUL ROAD (MC 81) 0.30 km · AR01 - TALBINGO PERMANENT ACCESS (MC 82) 0.20 km · AR01 - TALBINGO CONST. ACCESS - MID LEVEL HAUL ROAD (MC 84) 0.60 km · AR01 - TALBINGO CONST. ACCESS - UPPER HAUL ROAD (MC 83) 0.30 km · AR01 - TALBINGO SPOIL ROAD (MCO0) 5.85 km AR03 - TANTANGARA ROAD (MCE0) 15.10 km · AR03 - QUARRY TRAIL ROAD 1 (MCD0-1) 2.54 km · AR03 - QUARRY TRAIL ROAD 2 (MCD0-2) 0.25 km · AR03 - TANTANGARA BARGE RAMP ROAD (MCD2) 0.50 km · AR03 - TANTANGARA CAMP ROAD (SPOIL HAUL ROAD) (MCP0) 3.20 km · AR03 - TANTANGARA INTAKE ACCESS ROAD (UPPER) (MCDK) 0.37 km · AR03 - TANTANGARA INTAKE ACCESS ROAD (LOWER 1) (MCDJ) 0.46 km · AR03 - TANTANGARA STOCKPILE ACCESS ROAD (MCDI) 0.50 km · AR03 - COFFERDAM ROAD (NO CODE) 0.55 km
<p>Supplier Requirements.</p>	<ul style="list-style-type: none"> • Future Gen require suppliers that: • Have a demonstrated track record of providing Main Road Projects and meeting all specification and requirements as per TfNSW . • Have the required government or industry certifications, licenses, associations and/or insurances to deliver the opportunity. • Subcontractor shall comply with all Safety and Environmental Management requirements for the Project. Site Specific Environmental Management Plans will be prepared by FGJV and approved by the NSW Department of Planning, Industry and Environment (DPIE). The subcontractor must comply with these plans once approved by DPIE. • All vehicles need to be fitted with In Vehicle Monitoring System, as per FGJV requirements. • Have an exemplary safety record and a documented management system for tracking safety performance. • Are financially viable and can demonstrate commercial value. • Can demonstrate a strong commitment to training and retaining a local workforce.

- | | |
|--|--|
| | <ul style="list-style-type: none">• Have an excellent track record in employing and progressing the careers of Indigenous people.• Are progressively finding ways to develop the careers of women, veterans and people with disabilities.• Treat the environmental they are working in with respect and consideration. |
|--|--|

<p>General Information.</p>	<p>Future Gen will consider all ICN Registrations where:</p> <ul style="list-style-type: none"> • The business demonstrates through their response a clear capability against the key requirements. • The business completes a response to all Future Gen questions and/or Future Gen documentation. • The businesses ICN profile is up to date and complete. • The registration is complete prior to any closing date. <p>The business operates in Australia and is a registered Australian business.</p>
<p>Local and Regional Content</p>	<p>Future Gen strongly encourages businesses who have head offices and/or dedicated premises with the appropriate Local Government approvals from the following regions:</p> <ul style="list-style-type: none"> • Snowy Monaro Regional Council Local Government Area. • Snowy Valleys Council Local Government Area. • Furthermore, Future Gen strongly encourages Aboriginal and Torres Strait Islander businesses to submit applications.
<p>Notes</p>	<p>Future Gen will obtain ongoing reporting from ICN on a regular basis.</p> <p>Future Gen will review all registrations, noting that any incomplete registration will be excluded from consideration.</p> <p>Further involvement may range from a request for a follow up meeting; request to prequalify, through to request for tender.</p> <p>Submitting a registration of interest does not guarantee that the supplier will be selected for prequalification or tender opportunities.</p>



AR02 - MARICA WEST ROAD
(PART 2)
MCG0 (2)

AR02 - VENTILATION
SHAFT ACCESS ROAD
MCG1

AR02 - MARICA WEST ROAD
(PART 1)
MCG0 (1)

AR02 - MARICA TRAIL ROAD
(PART 2)
MCB0 (2)

AR02 - MARICA TRAIL ROAD
(PART 1)
MCB0 (1)

AR02 - ECVT ACCESS ROAD
MCT0

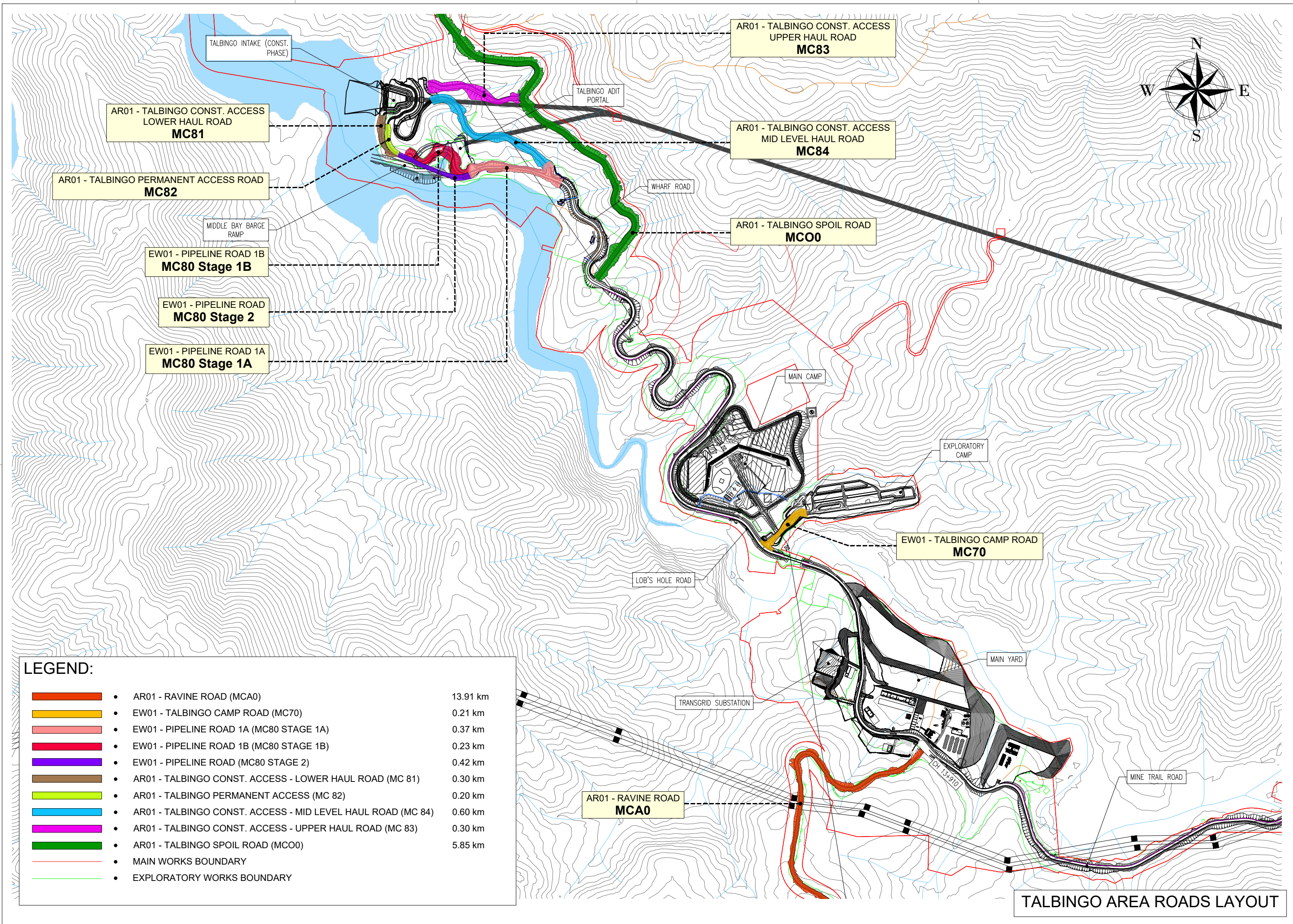
AR02 - MARICA CAMP ROAD
MCG2

AR02 - SURGE SHAFT
ACCESS ROAD
MCB1

LEGEND:

- AR02 - MARICA TRAIL ROAD PART 1 (MCB0-1) 4.80 km
- AR02 - MARICA TRAIL ROAD PART 2 (MCB0-2) 0.54 km
- AR02 - SURGE SHAFT ACCESS ROAD (MCB1) 0.20 km
- AR02 - MARICA WEST ROAD PART 1 (MCG0-1) 1.70 km
- AR02 - MARICA WEST ROAD PART 2 (MCG0-2) 5.70 km
- AR02 - VENTILATION SHAFT ACCESS ROAD (MCG1) 0.21 km
- AR02 - MARICA CAMP ROAD (MCG2) 0.12 km
- AR02 - ECVT ACCESS ROAD (MCT0) 0.30 km
- MAIN WORKS BOUNDARY
- EXPLORATORY WORKS BOUNDARY

MARICA AREA ROADS LAYOUT



AR01 - TALBINGO CONST. ACCESS LOWER HAUL ROAD
MC81

AR01 - TALBINGO CONST. ACCESS UPPER HAUL ROAD
MC83

AR01 - TALBINGO CONST. ACCESS MID LEVEL HAUL ROAD
MC84

AR01 - TALBINGO PERMANENT ACCESS ROAD
MC82

AR01 - TALBINGO SPOIL ROAD
MCO0

EW01 - PIPELINE ROAD 1B
MC80 Stage 1B

EW01 - PIPELINE ROAD
MC80 Stage 2

EW01 - PIPELINE ROAD 1A
MC80 Stage 1A

EW01 - TALBINGO CAMP ROAD
MC70

AR01 - RAVINE ROAD
MCA0

LEGEND:

	• AR01 - RAVINE ROAD (MCA0)	13.91 km
	• EW01 - TALBINGO CAMP ROAD (MC70)	0.21 km
	• EW01 - PIPELINE ROAD 1A (MC80 STAGE 1A)	0.37 km
	• EW01 - PIPELINE ROAD 1B (MC80 STAGE 1B)	0.23 km
	• EW01 - PIPELINE ROAD (MC80 STAGE 2)	0.42 km
	• AR01 - TALBINGO CONST. ACCESS - LOWER HAUL ROAD (MC 81)	0.30 km
	• AR01 - TALBINGO PERMANENT ACCESS (MC 82)	0.20 km
	• AR01 - TALBINGO CONST. ACCESS - MID LEVEL HAUL ROAD (MC 84)	0.60 km
	• AR01 - TALBINGO CONST. ACCESS - UPPER HAUL ROAD (MC 83)	0.30 km
	• AR01 - TALBINGO SPOIL ROAD (MCO0)	5.85 km
	• MAIN WORKS BOUNDARY	
	• EXPLORATORY WORKS BOUNDARY	

TALBINGO AREA ROADS LAYOUT

