



# CHEVRON AUSTRALIA OPERATIONS

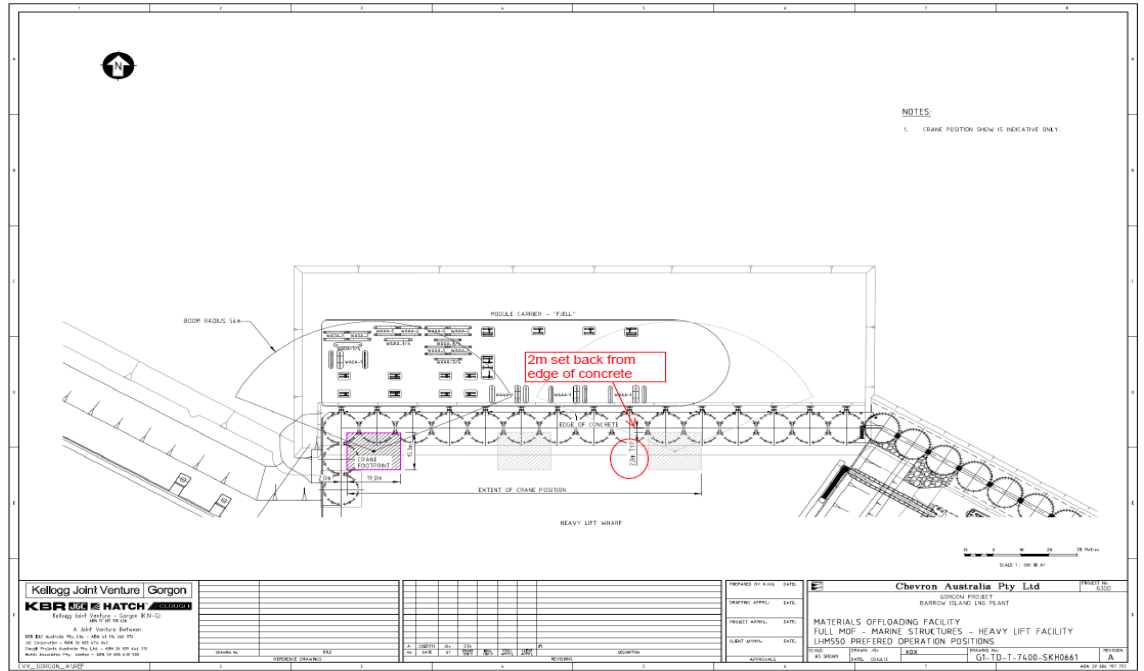
**TITLE:** Mobile Harbour Crane provision in support of Supply Base operations (Barrow Island) - U-47911

**DESCRIPTION:** Chevron Australia is seeking expressions of interest from Service Providers with a demonstrated capability in wharf side equipment to provide a Mobile Harbour Crane (MHC) in support of Company's Supply Base operations on Barrow Island (BWI) for the scope identified below.

Expressions of interest are being sought to enable Chevron to refine a Bidders list to include in a Request for Proposal (RFP).

The requirement in support of the scope of work on BWI will include, but not be limited to:

- Provision of MHC (dry hire) in support of Supply Base operations on BWI;
- Minimum specifications of the MHC required on BWI are as follows;
- Wharf Limitations - Heavy Lift Facility (HLF);
  - Setback at a minimum of seventeen (17) metres from the face of the wharf to the centre of the crane;
  - Crane to be fitted with a "EH5U Bromma Spreader bar"
  - This setback area requires the crane to have a reach capability of 45-50 metres (depending on vessel size), and a load lifting capability of 25 ton under the Spreader at the furthest reach, to enable effective loading / unloading activities without the need for the vessel to be turned around.



- Service Providers to address the following in the EOI;
  - Type / Model of MHC to be supplied;
  - Quarantine preparations and compliance;
  - Mobilization plan to BWI;
  - Planned Maintenance Schedule; (pricing to be inclusive of Maintenance costs)

- Licensing & ongoing certification;
- Service Providers to advise any Innovation and / or Technology options that are available to assist with Cargo Carrying Unit (CCU) recognition and tracking.

**Current Harbour Crane Details:**

- Liebherr LHM 550 'Lipotronic', with Option 2: size supporting pads, supporting area of pads 19,8 m<sup>2</sup> (see <https://www.liebherr.com/en/aus/products/maritime-cranes/port-equipment/mobile-harbour-crane/details/lhm550.html>)
- EH5U Bromma Spreader fitted.

**Previous lift history:**

- Typical types of Break Bulk cargo processed
  - Sub stations
  - Exhaust stacks
  - Rolling stock
  - All terrain Cranes
  - 52 seat buses
  - Civil Machinery
  - Transformers.
- Volumes of containerised cargo process during a typical Vessel processed in a standard 12 hr shift
  - 40 units off
  - 80 units on

**Service Providers shall provide:**

1. Company profile
2. Company experience in providing similar services
3. Proposed method of work for meeting the specified scope items above
4. Proposed technologies details related to operating systems, security and data transfer.
5. Proposed commercial models for consideration.

The RFP is expected to be issued to shortlisted service providers during Q4 2020, with a forecast Service commencement in Q4 2021.

**CONTACT:** Industry Capability Network of Western Australia – [www.icnwa.org.au/ContactUs.asp](http://www.icnwa.org.au/ContactUs.asp)

**Please Note: This is a request for specific expressions of interest. Service Providers will be considered for inclusion in the RFP if suitably qualified against this package.**

**PROJECT URL:** <https://australia.chevron.com/>

**ATTACHMENT:** Technical Data LHM 550

**CLOSING DATE:** Friday 23 October 2020