

SCOPE OF WORKS (SOW) SUMMARY -
BLAST AND PAINT EQUIPMENT - DESIGN,
SUPPLY & INSTALL
2 July 2020

EXPRESSION OF INTEREST

Blast and Paint Building 008

202007-ONS-ONDP-SOW-10002-BNP

Scope of work

1. Background

The Australian Government is delivering, through ANI, a state-of-the-art submarine building facility in support of its commitment to a continuous naval submarine building program for Australia. This Osborne Naval Defence Precinct (ONDP) is located at Osborne, South Australia, and comprises various sites utilising new and existing facilities for submarine construction.

A new Blast and Painting building will be implemented as part of this project. Its purpose will be for the storage, cleaning, blasting, painting, and drying of submarine sections and components, as well as the adjusting of composite materials and preparation of anechoic tiles. The building must be able to safely contain and treat all production waste generated from each of the activities undertaken within.

The workshop will house individual medium and large blast and paint booths to accommodate parts up to 50T and will be integrated into the super structure along with utilities area, parts laydown, office and amenities etc.

The blasting booths will require an automated underfloor abrasive recovery system and the painting booths will potentially require in-floor plenums for down drafting ventilation systems, along with associated hazardous zone controls. Further requirements include, but not limited to, heating, humidification and breathing air systems, noise attenuation, and VOC management.

One of the project objectives is to maximise Australian content during the design, supply and construction of the blast and paint building.

Refer Attachment 1, general arrangement drawing as an indicative concept developed through our partners, Naval Group, as the end user of the delivered facilities.

2. Scope of work

The scope of work for this proposed engagement is to provide specialist advice, develop a concept and schematic design including equipment requirements and specifications, provide schedule and cost advice and other planning and design phase services. In addition to these preliminary services, the works will potentially include final design, supply, installation, testing and commissioning of Blast and Paint equipment into the Blast and Paint Building (by others) which will include but not limited to the following;

- Process design and layout
- Blasting and Grit recovery systems
- Paint Mixing and painting systems
- Dust and Fume extraction systems
- Heating
- Dehumidification
- Associated accessories
- Electrical and instrumentation
- Breathing air
- Interlocks
- VOC plant

The design, supply and installation must comply with Australian Safety Standards and Regulatory requirements and in particular, identification of Hazardous areas and classifications.

The scope for design, supply and installation will look at maximising Australian content and ensuring a maximum value for money outcome.

The contractor will be responsible for optimising the process flow, equipment selection and layout in conjunction with ensuring maximum Australian content.

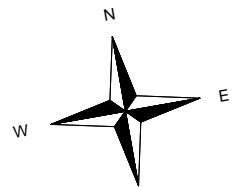
3. Execution

Expressions of interest are sought for Early Contractor Involvement (ECI) in the early stage of design and development of the blast and paint facility. To ensure suitably qualified and experienced subject matter experts are identified this document has been uploaded onto the ICN gateway. Depending on the number of interested parties a shortlist will be created focusing on the criteria as set out as part of this submission. The successful shortlisted partners will be supplied with a scope of works and given the opportunity to tender on this works. The expected works timeline is as follows:

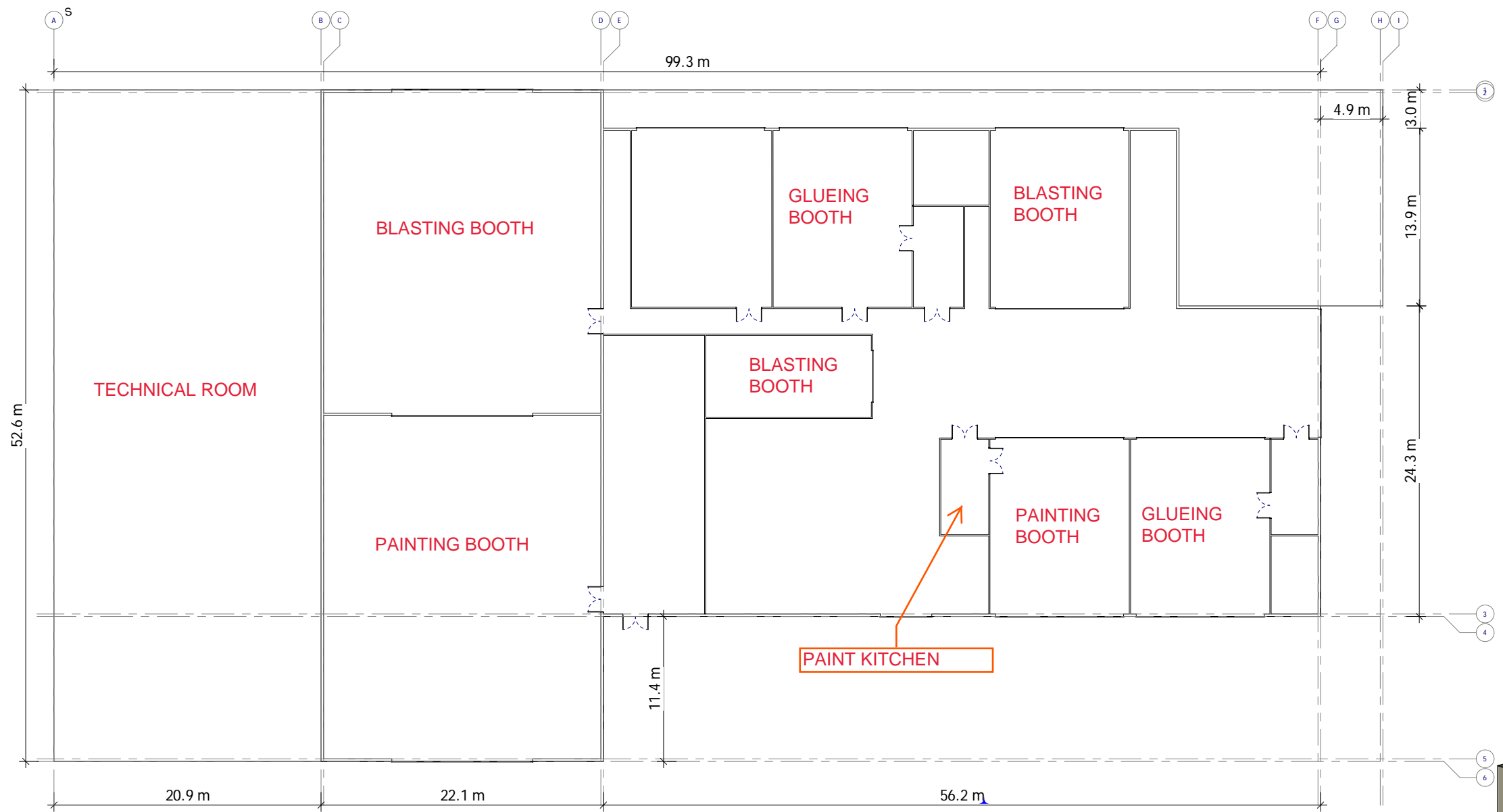
- Closing date of Expression of Interest submission through the ICN – Friday, 17 July 2020
- Tender documentation issued to shortlisted partners – Date TBA
- Closing date of ECI tender response – Date TBA
- Award of works August 2020
- The works will be split into three phases
 - Phase 1 – Q3/Q4 2020
 - Material / process flows
 - Equipment requirements and specification
 - Overall design layout, excluding the building structure
 - Concept design development
 - Phase 2 – Q4 2020 / Q1 2021
 - Development to 30% with a target of 60% blast and paint equipment layout
 - Project costs with pricing for specialist specific information
 - Preliminary schedule
 - Phase 3 – Q2 2021 to Q1 2022
 - Working with ANI and other building works designers to support the design of suitable building infrastructure to support equipment requirements
 - Supporting in the development of a suitable project delivery methodology, expected to be D&C, to progress the building design to 60% and ultimately 90% design prior to construction.
 - Early procurement activities

It should be noted that Phase 1 and 2 are included within the initial ECI tender.

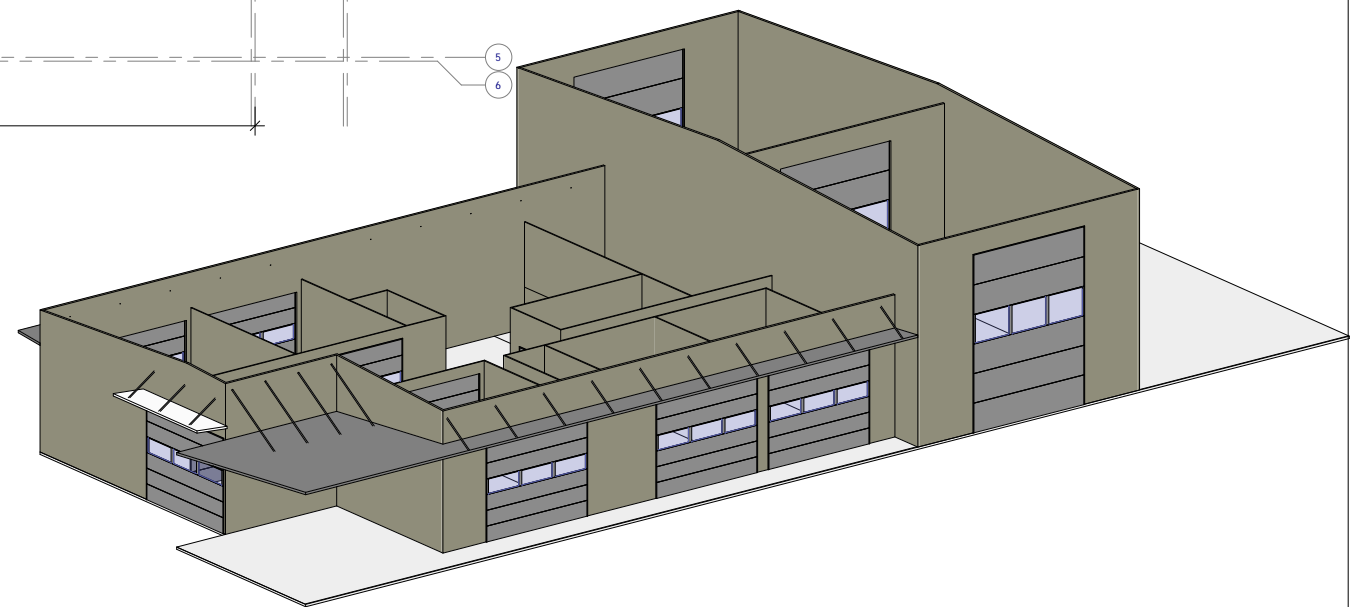
Attachment 1: B&P008-Sk001 Blast and Paint Facility.pdf



BUILDING LOCATION



1 FOOTPRINT
Scale : 1 : 200



2 3D GLOBAL VIEW